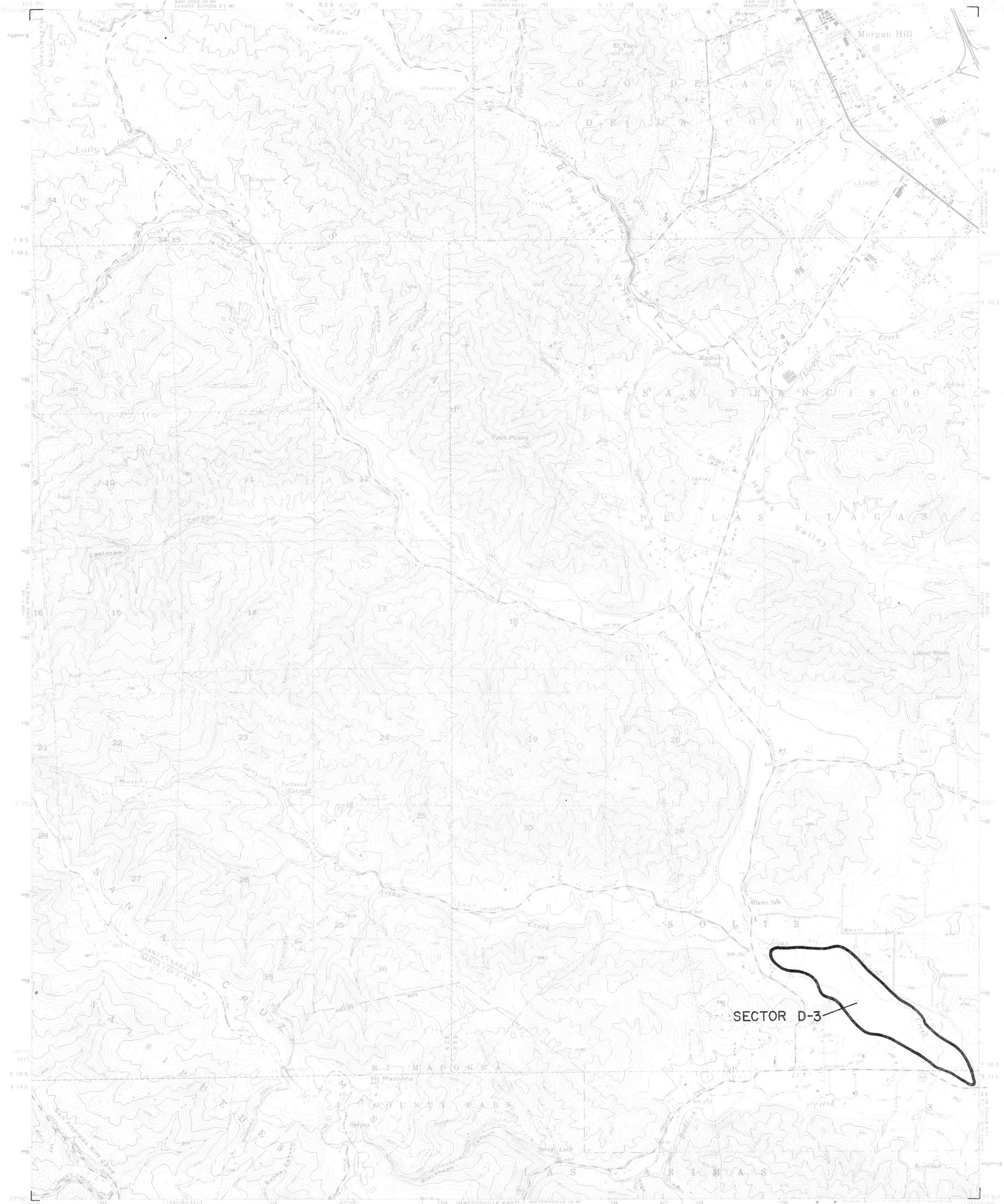




DIVISION OF MINES AND GEOLOGY  
JAMES F. DAVIS, STATE GEOLOGIST

STATE OF CALIFORNIA - GEORGE DEUKMEJIAN, GOVERNOR  
THE RESOURCES AGENCY - GORDON K. VAN VLECK, SECRETARY FOR RESOURCES  
DEPARTMENT OF CONSERVATION - RANDALL M. WARD, DIRECTOR

MT. MADONNA QUADRANGLE  
SMARA DESIGNATION MAP NO. 85-6  
MONTEREY BAY PLATE 16



TOPOGRAPHIC BASE MAP BY U.S. GEOLOGICAL SURVEY  
Reduced from 1:24,000



CONTOUR INTERVAL 40 FEET  
DASHED LINES REPRESENT 10-FOOT CONTOURS  
NATIONAL GEODETIC VERTICAL DATUM OF 1929

MT. MADONNA, CALIF.

EXPLANATION

- Sector boundary
- Properties owned or controlled by aggregate producers
- Depleted resources



Regionally Significant Construction  
Aggregate Resource Areas In The  
**MONTEREY BAY**  
Production-Consumption Region

STATE MINING AND GEOLOGY BOARD  
JANUARY 1987

PREPARED IN COMPLIANCE WITH THE SURFACE MINING  
AND RECLAMATION ACT OF 1975, ARTICLE 4, SECTION 2790