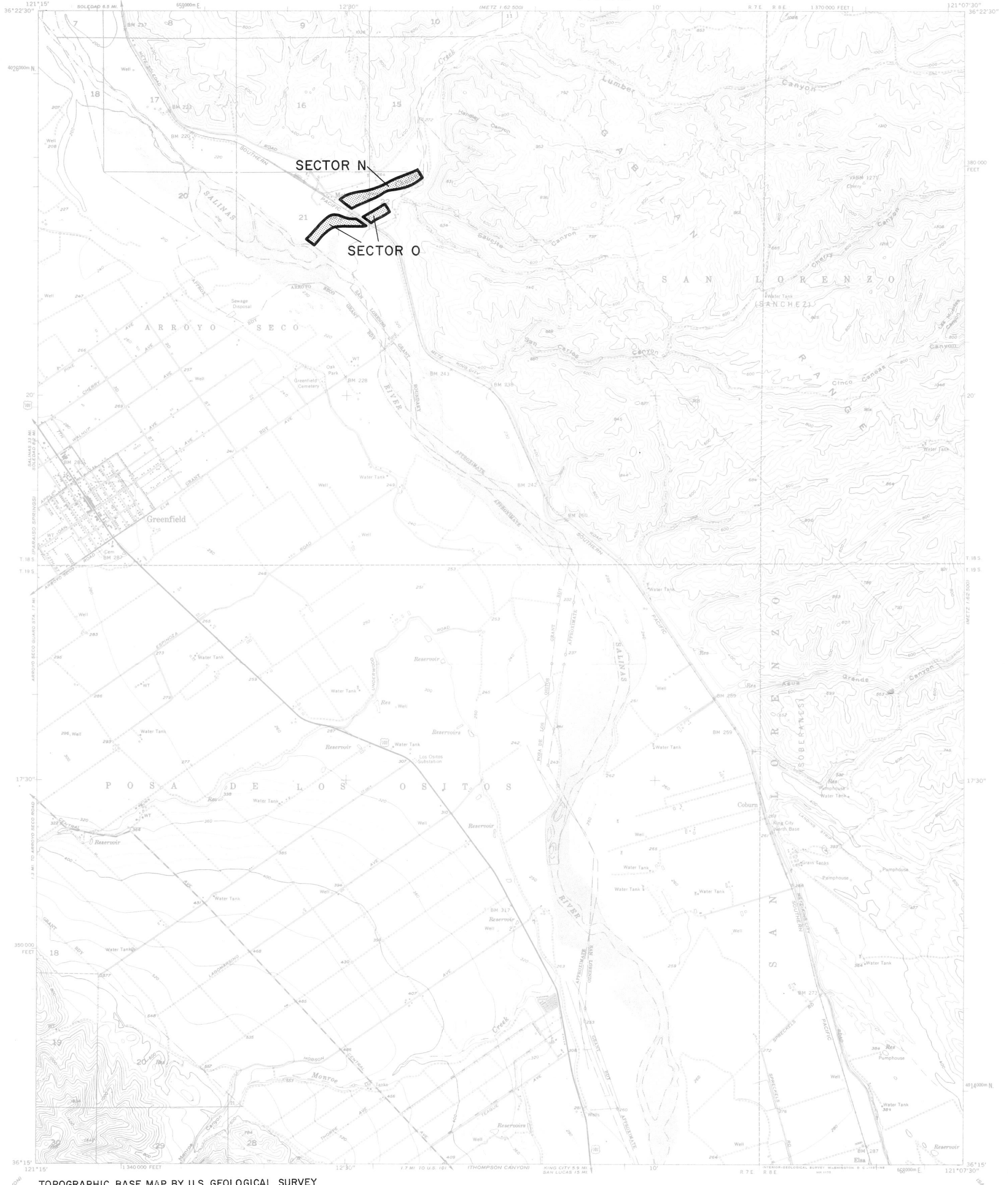




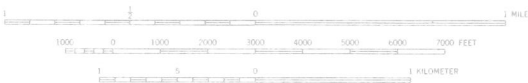
DIVISION OF MINES AND GEOLOGY
JAMES F. DAVIS, STATE GEOLOGIST

STATE OF CALIFORNIA—GEORGE DEUKMEJIAN, GOVERNOR
THE RESOURCES AGENCY—GORDON K. VAN VLECK, SECRETARY FOR RESOURCES
DEPARTMENT OF CONSERVATION—RANDALL M. WARD, DIRECTOR

GREENFIELD QUADRANGLE
SMARA DESIGNATION MAP NO. 85-6
MONTEREY BAY PLATE 14






TOPOGRAPHIC BASE MAP BY U.S. GEOLOGICAL SURVEY
Reduced from 1:24,000



CONTOUR INTERVAL 40 FEET
DASHED LINES REPRESENT 10-FOOT CONTOURS
DATUM IS MEAN SEA LEVEL

GREENFIELD, CALIF.

EXPLANATION

-  Sector boundary
-  Properties owned or controlled by aggregate producers
-  Depleted resources



Regionally Significant Construction
Aggregate Resource Areas In The
MONTEREY BAY
Production-Consumption Region

STATE MINING AND GEOLOGY BOARD
JANUARY 1987

PREPARED IN COMPLIANCE WITH THE SURFACE MINING
AND RECLAMATION ACT OF 1975, ARTICLE 4, SECTION 2790