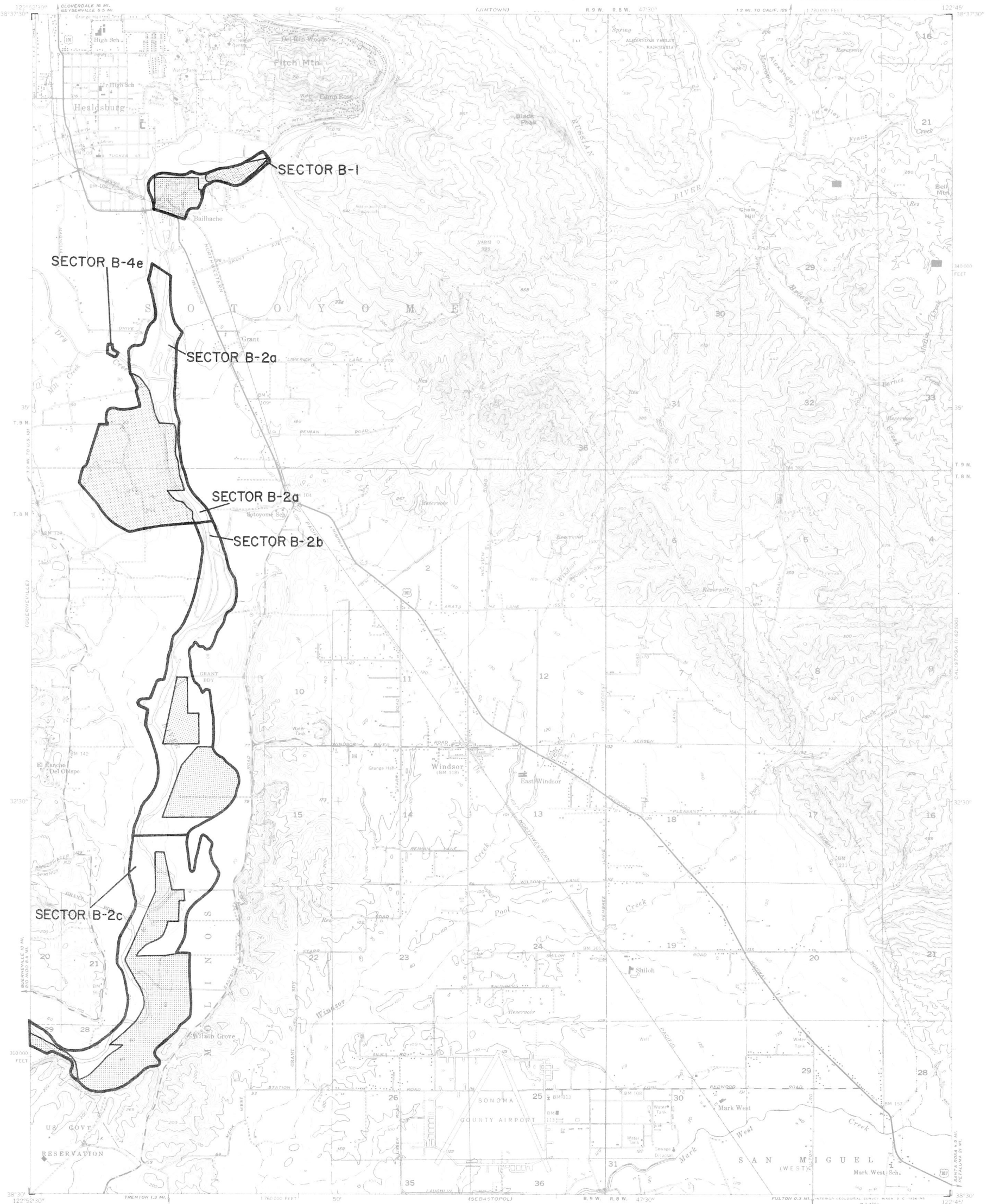




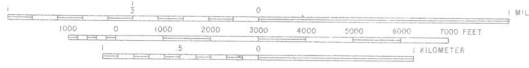
STATE MINING AND GEOLOGY BOARD
JAMES A. ANDERSON, CHAIRMAN

STATE OF CALIFORNIA—GEORGE DEUKMEJIAN, GOVERNOR
THE RESOURCES AGENCY—GORDON K. VAN VLECK, SECRETARY FOR RESOURCES
DEPARTMENT OF CONSERVATION—RANDALL M. WARD, DIRECTOR

HEALDSBURG QUADRANGLE
SMARA DESIGNATION MAP NO. 85-5
NORTH SAN FRANCISCO BAY PLATE 6



TOPOGRAPHIC BASE MAP BY U.S. GEOLOGICAL SURVEY
Reduced from 1:24,000



CONTOUR INTERVAL 20 FEET
DASHED LINES REPRESENT 10-FOOT CONTOURS
DATUM IS MEAN SEA LEVEL

HEALDSBURG, CALIF.

EXPLANATION

- Sector boundary
- Properties owned or controlled by aggregate producers
- Depleted resources



Regionally Significant Construction Aggregate Resource Areas In The NORTH SAN FRANCISCO BAY Production-Consumption Region

STATE MINING AND GEOLOGY BOARD
JANUARY 1987

PREPARED IN COMPLIANCE WITH THE SURFACE MINING AND RECLAMATION ACT OF 1975, ARTICLE 4, SECTION 2790