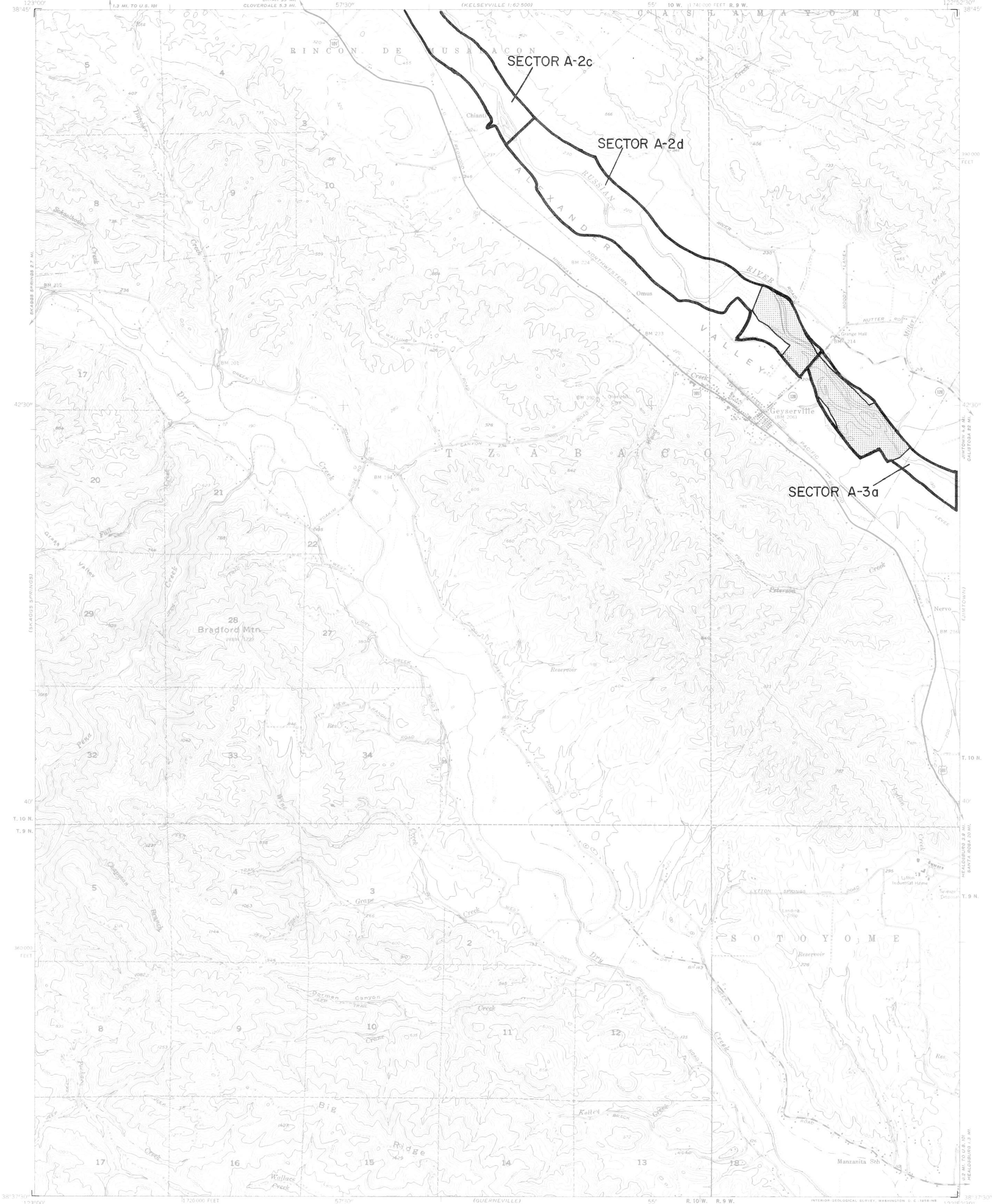




STATE MINING AND GEOLOGY BOARD  
 JAMES A. ANDERSON, CHAIRMAN

STATE OF CALIFORNIA—GEORGE DEUKMEJIAN, GOVERNOR  
 THE RESOURCES AGENCY—GORDON K. VAN VLECK, SECRETARY FOR RESOURCES  
 DEPARTMENT OF CONSERVATION—RANDALL M. WARD, DIRECTOR

GEYSERVILLE QUADRANGLE  
 SMARA DESIGNATION MAP NO. 85-5  
 NORTH SAN FRANCISCO BAY PLATE 3



TOPOGRAPHIC BASE MAP BY U.S. GEOLOGICAL SURVEY  
 Reduced from 1:24,000



CONTOUR INTERVAL 40 FEET  
 DASHED LINES REPRESENT 10 FOOT CONTOURS  
 DATUM = MEAN SEA LEVEL

GEYSERVILLE, CALIF.

EXPLANATION

- Sector boundary
- Properties owned or controlled by aggregate producers
- Depleted resources



**Regionally Significant Construction  
 Aggregate Resource Areas In The  
 NORTH SAN FRANCISCO BAY  
 Production-Consumption Region**

STATE MINING AND GEOLOGY BOARD  
 JANUARY 1987

PREPARED IN COMPLIANCE WITH THE SURFACE MINING  
 AND RECLAMATION ACT OF 1975, ARTICLE 4, SECTION 2790