

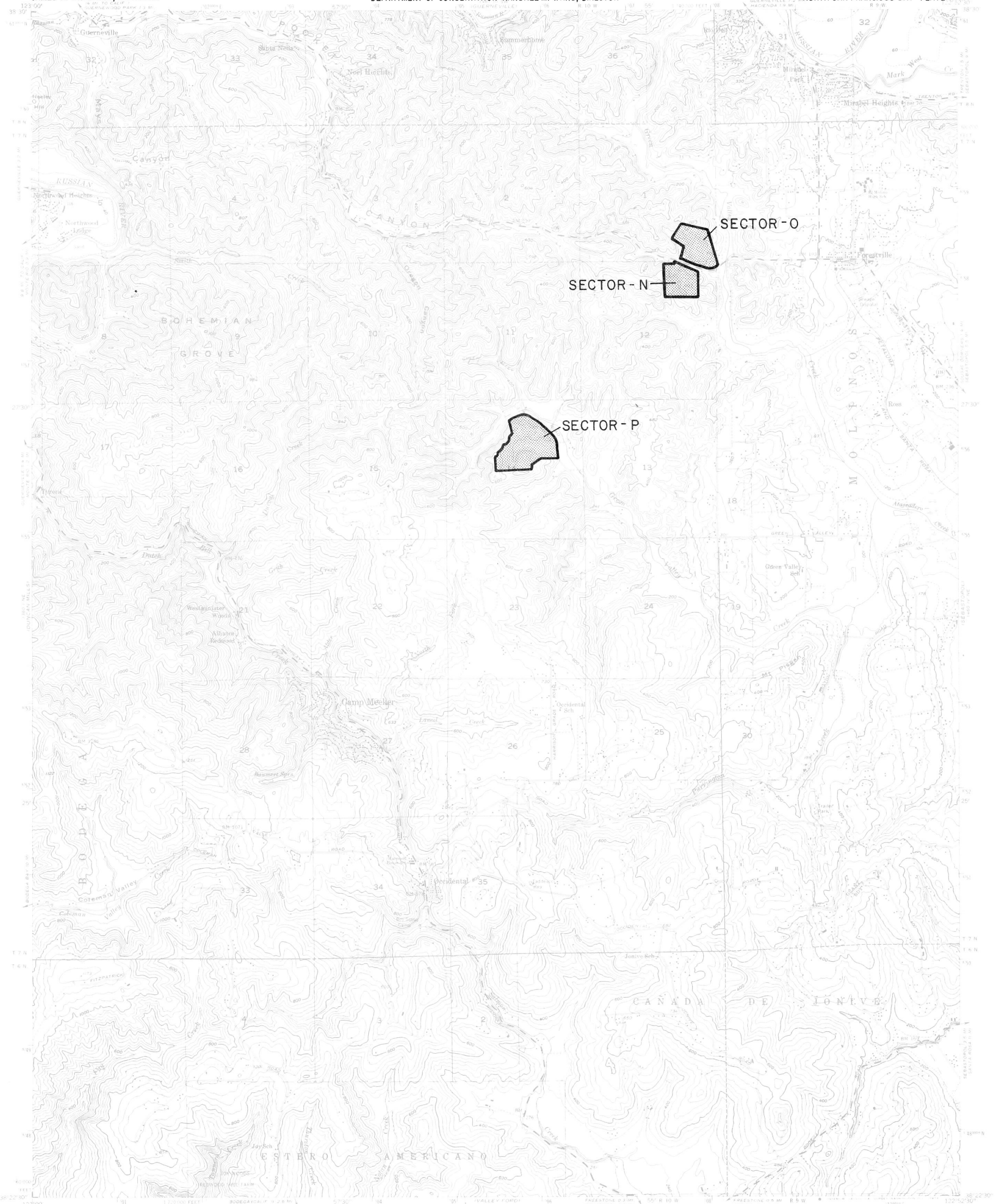


CAMP MEEKER QUADRANGLE

STATE MINING AND GEOLOGY BOARD
JAMES A. ANDERSON, CHAIRMAN

STATE OF CALIFORNIA—GEORGE DEUKMEJIAN, GOVERNOR
THE RESOURCES AGENCY—GORDON K. VAN VLECK, SECRETARY FOR RESOURCES
DEPARTMENT OF CONSERVATION—RANDALL M. WARD, DIRECTOR

SMARA DESIGNATION MAP NO. 85-5
NORTH SAN FRANCISCO BAY PLATE 20



TOPOGRAPHIC BASE MAP BY U.S. GEOLOGICAL SURVEY
Reduced from 1:24,000



CAMP MEEKER, CALIF.

EXPLANATION

- Sector boundary
- Properties owned or controlled by aggregate producers
- Depleted resources



**Regionally Significant Construction
Aggregate Resource Areas In The
NORTH SAN FRANCISCO BAY
Production-Consumption Region**

STATE MINING AND GEOLOGY BOARD
JANUARY 1987

PREPARED IN COMPLIANCE WITH THE SURFACE MINING
AND RECLAMATION ACT OF 1975, ARTICLE 4, SECTION 2790