

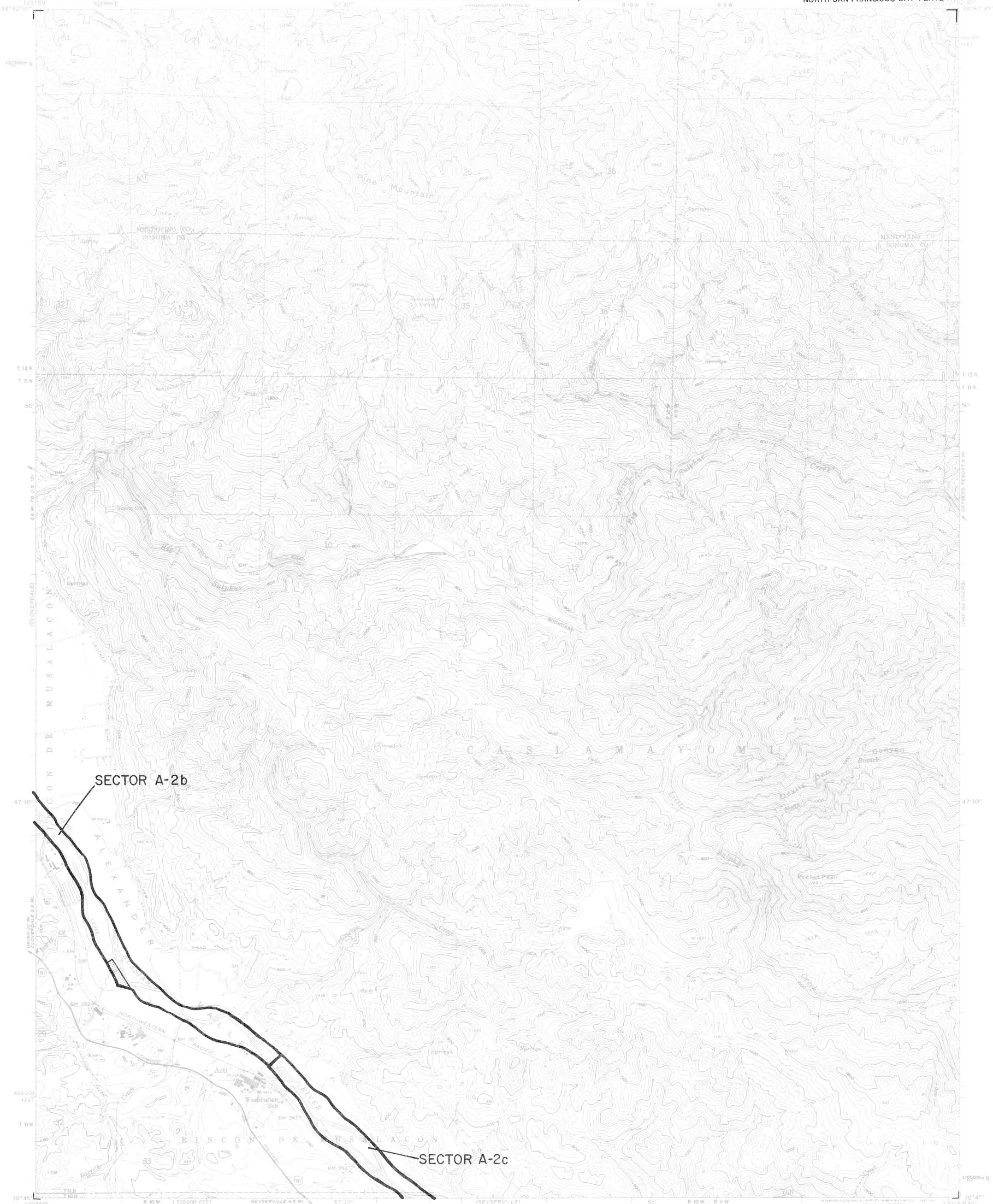


ASTI QUADRANGLE

STATE MINING AND GEOLOGY BOARD  
JAMES A. ANDERSON, CHAIRMAN

STATE OF CALIFORNIA—GEORGE DEUKMEJIAN, GOVERNOR  
THE RESOURCES AGENCY—GORDON K. VAN VLECK, SECRETARY FOR RESOURCES  
DEPARTMENT OF CONSERVATION—RANDALL M. WARD, DIRECTOR

SMARA DESIGNATION MAP NO. 85-5  
NORTH SAN FRANCISCO BAY PLATE 1



TOPOGRAPHIC BASE MAP BY U.S. GEOLOGICAL SURVEY  
Reduced from 1:24,000



CONTOUR INTERVAL 40 FEET  
DOTTED LINES REPRESENT 20 FOOT CONTOURS  
DATUM IS MEAN SEA LEVEL

ASTI, CALIF.

EXPLANATION

- Sector boundary
- Properties owned or controlled by aggregate producers
- Depleted resources



**Regionally Significant Construction  
Aggregate Resource Areas In The  
NORTH SAN FRANCISCO BAY  
Production-Consumption Region**

STATE MINING AND GEOLOGY BOARD  
JANUARY 1987

PREPARED IN COMPLIANCE WITH THE SURFACE MINING  
AND RECLAMATION ACT OF 1975, ARTICLE 4, SECTION 2790