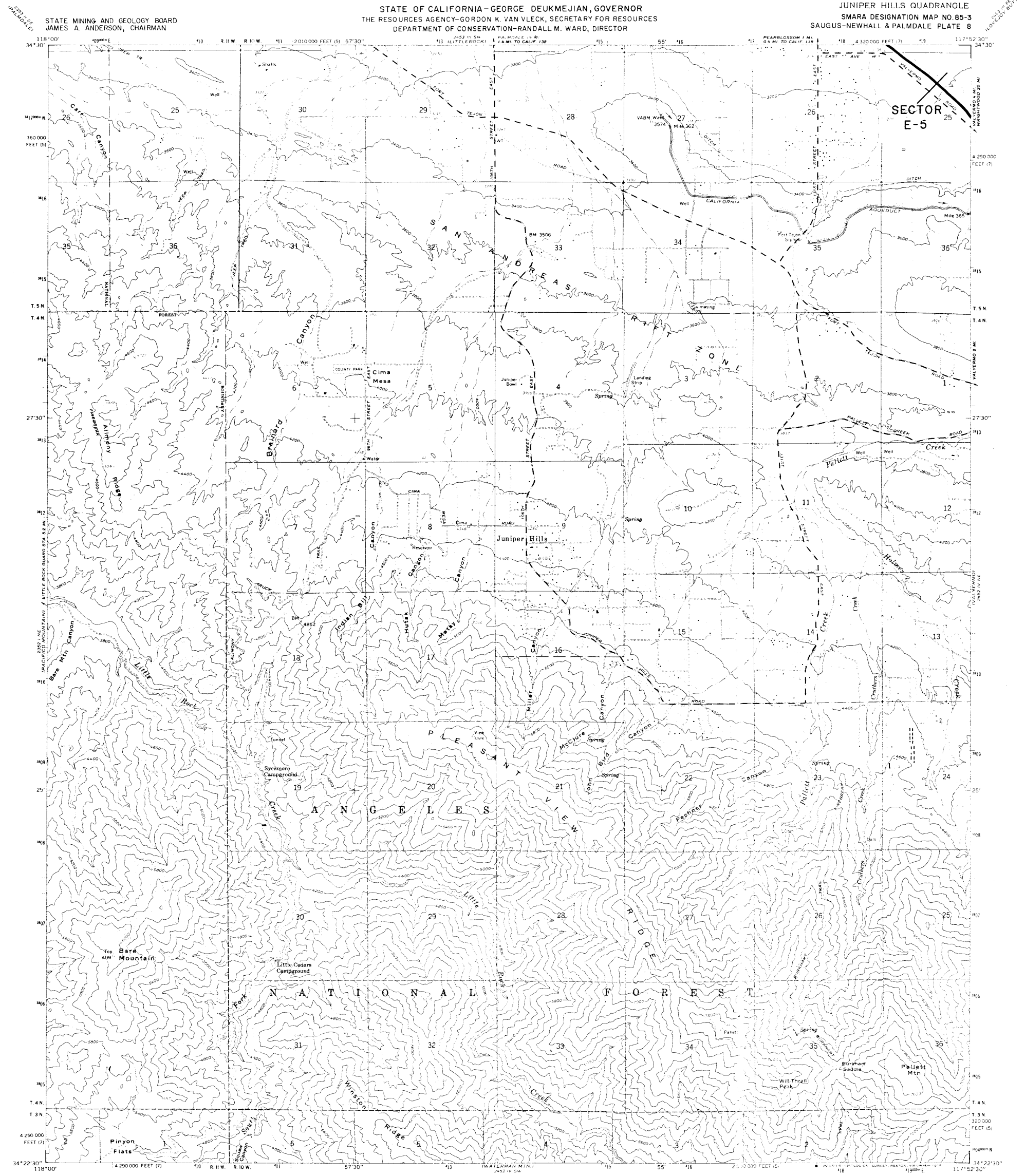




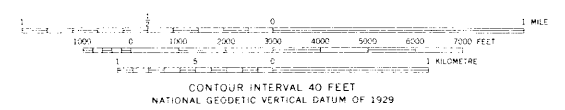
STATE OF CALIFORNIA—GEORGE DEUKMEJIAN, GOVERNOR
 THE RESOURCES AGENCY—GORDON K. VAN VLECK, SECRETARY FOR RESOURCES
 DEPARTMENT OF CONSERVATION—RANDALL M. WARD, DIRECTOR

JUNIPER HILLS QUADRANGLE
 SMARA DESIGNATION MAP NO. 85-3
 SAUGUS-NEWHALL & PALMDALE PLATE 8





SECTOR
E-5

TOPOGRAPHIC BASE MAP BY U.S. GEOLOGICAL SURVEY
 REDUCED FROM 1:24,000



JUNIPER HILLS, CALIF.

EXPLANATION

-  Sector boundary
-  Properties owned or controlled by aggregate producers



**Regionally Significant Construction
 Aggregate Resource Areas In The
 SAUGUS-NEWHALL & PALMDALE
 Production-Consumption Region**

STATE MINING AND GEOLOGY BOARD
 JANUARY 1987

PREPARED IN COMPLIANCE WITH THE SURFACE MINING
 AND RECLAMATION ACT OF 1975, ARTICLE 4, SECTION 2790