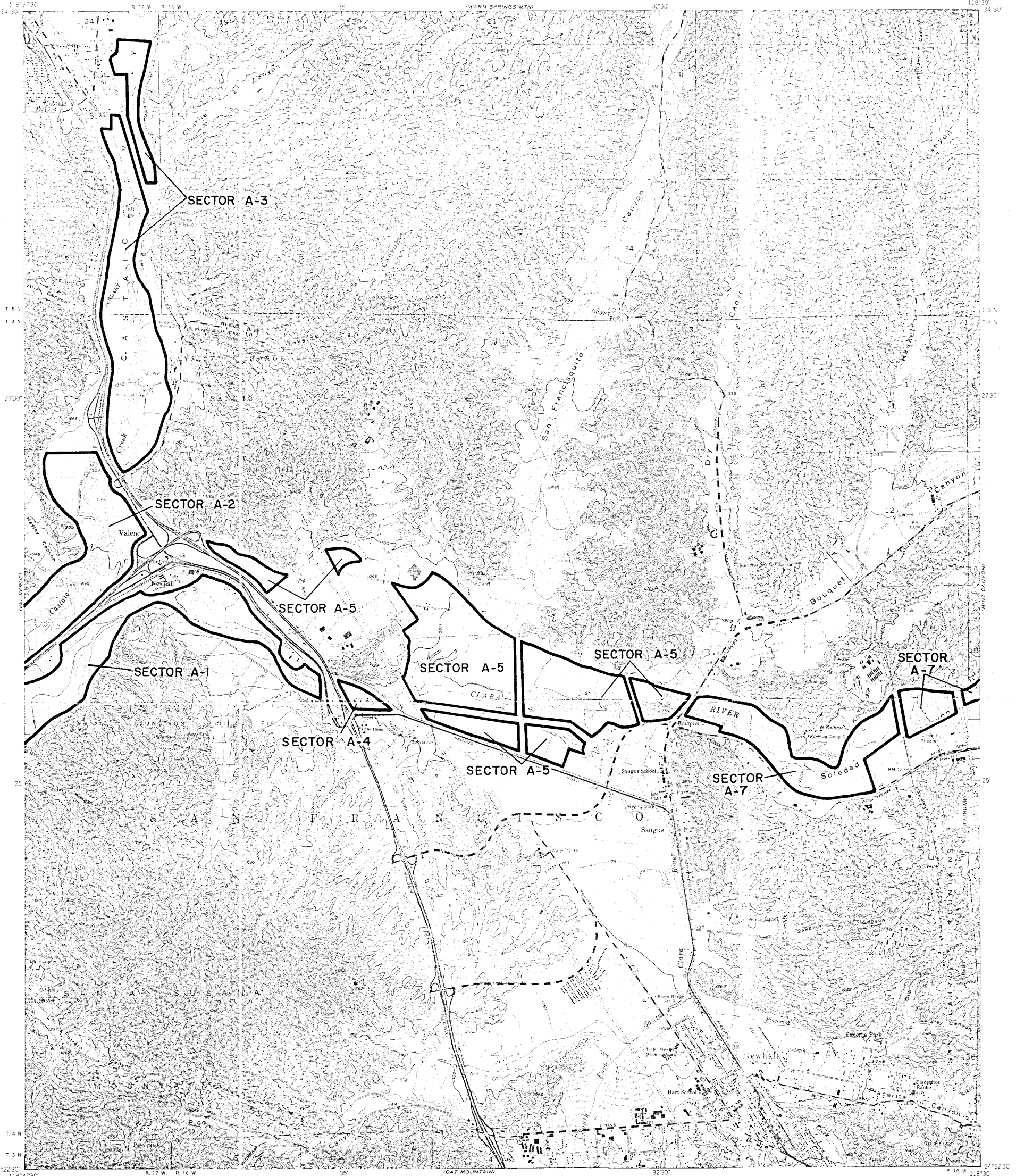


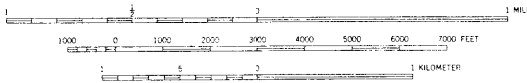
STATE MINING AND GEOLOGY BOARD  
JAMES A. ANDERSON, CHAIRMAN

STATE OF CALIFORNIA—GEORGE DEUKMEJIAN, GOVERNOR  
THE RESOURCES AGENCY—GORDON K. VAN VLECK, SECRETARY FOR RESOURCES  
DEPARTMENT OF CONSERVATION—RANDALL M. WARD, DIRECTOR

NEWHALL QUADRANGLE  
SMARA DESIGNATION MAP NO. 85-3  
SAUGUS-NEWHALL & PALMDALE PLATE 2



TOPOGRAPHIC BASE MAP BY U.S. GEOLOGICAL SURVEY  
REDUCED FROM 1:24,000



CONTOUR INTERVAL 25 FEET  
DOTTED LINES REPRESENT 5 FOOT CONTOURS  
DATUM IS MEAN SEA LEVEL

NEWHALL CALIF.

EXPLANATION

- Sector boundary
- Properties owned or controlled by aggregate producers



Regionally Significant Construction  
Aggregate Resource Areas In The  
**SAUGUS-NEWHALL & PALMDALE**  
Production-Consumption Region

STATE MINING AND GEOLOGY BOARD  
JANUARY 1987

PREPARED IN COMPLIANCE WITH THE SURFACE MINING  
AND RECLAMATION ACT OF 1975, ARTICLE 4, SECTION 2790