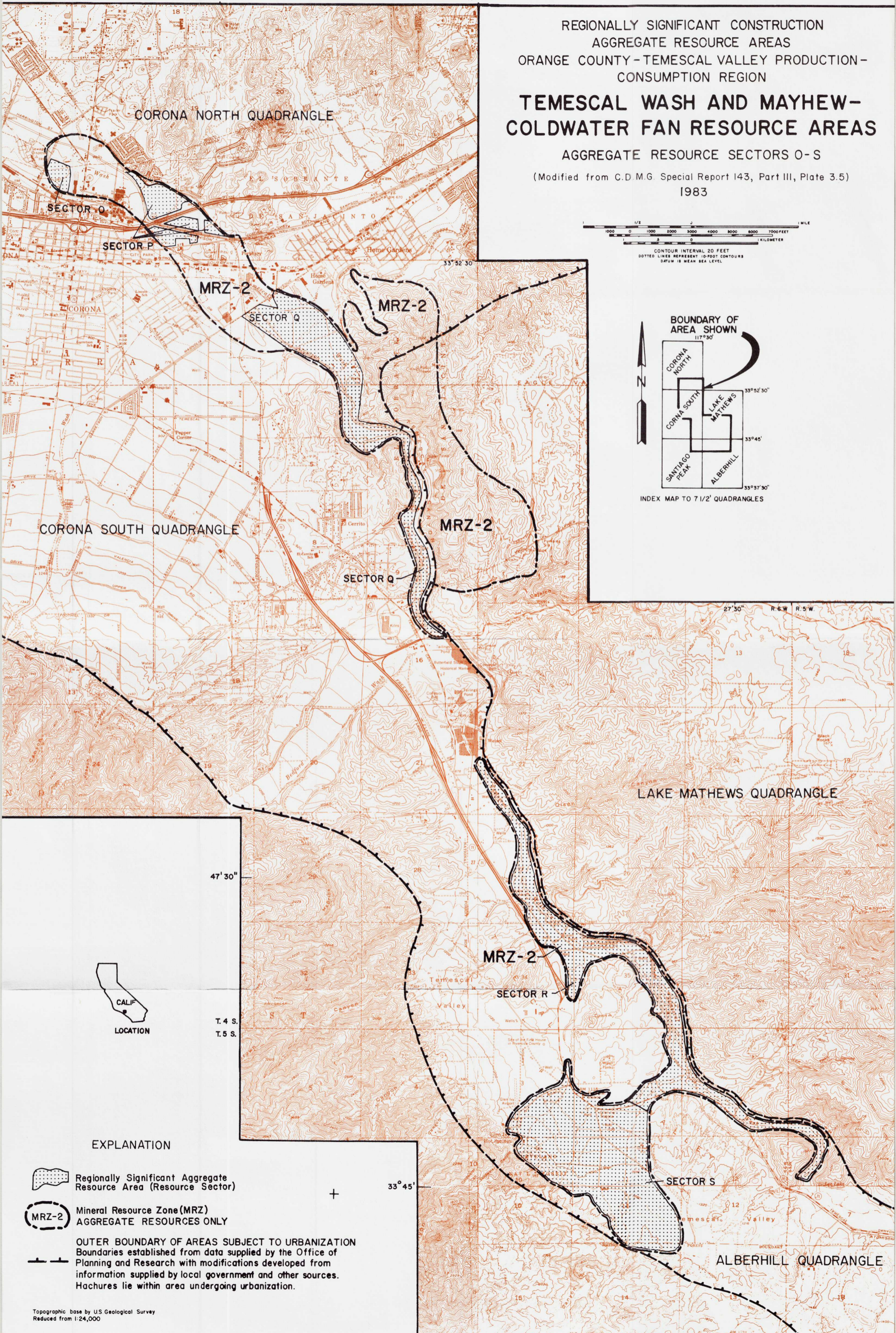
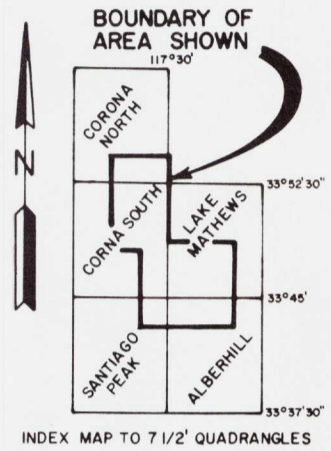
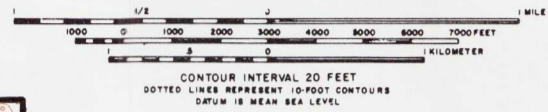




REGIONALLY SIGNIFICANT CONSTRUCTION  
AGGREGATE RESOURCE AREAS  
ORANGE COUNTY - TEMESCAL VALLEY PRODUCTION-  
CONSUMPTION REGION  
**TEMESCAL WASH AND MAYHEW-  
COLDWATER FAN RESOURCE AREAS**

AGGREGATE RESOURCE SECTORS O-S  
(Modified from C.D.M.G. Special Report 143, Part III, Plate 3.5)  
1983



EXPLANATION

-  Regionally Significant Aggregate Resource Area (Resource Sector)
-  Mineral Resource Zone (MRZ) AGGREGATE RESOURCES ONLY

OUTER BOUNDARY OF AREAS SUBJECT TO URBANIZATION  
Boundaries established from data supplied by the Office of Planning and Research with modifications developed from information supplied by local government and other sources. Hachures lie within area undergoing urbanization.