

DESIGNATED SAND AND GRAVEL RESOURCE AREAS SAN FERNANDO VALLEY PRODUCTION CONSUMPTION REGION

LOS ANGELES COUNTY

1981

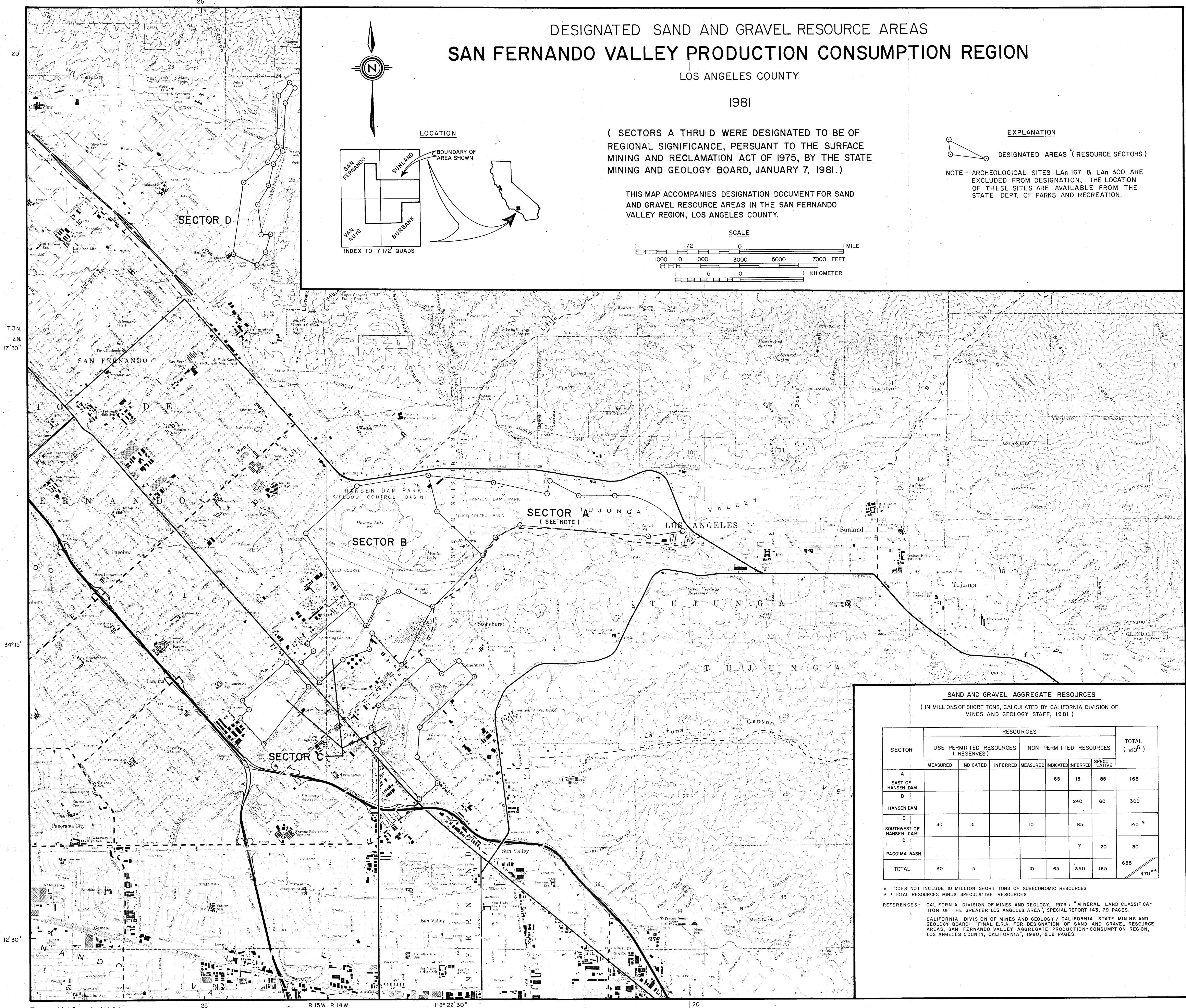
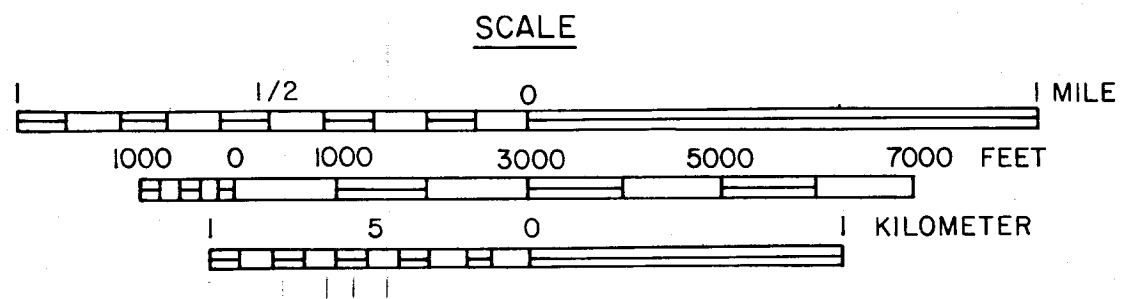
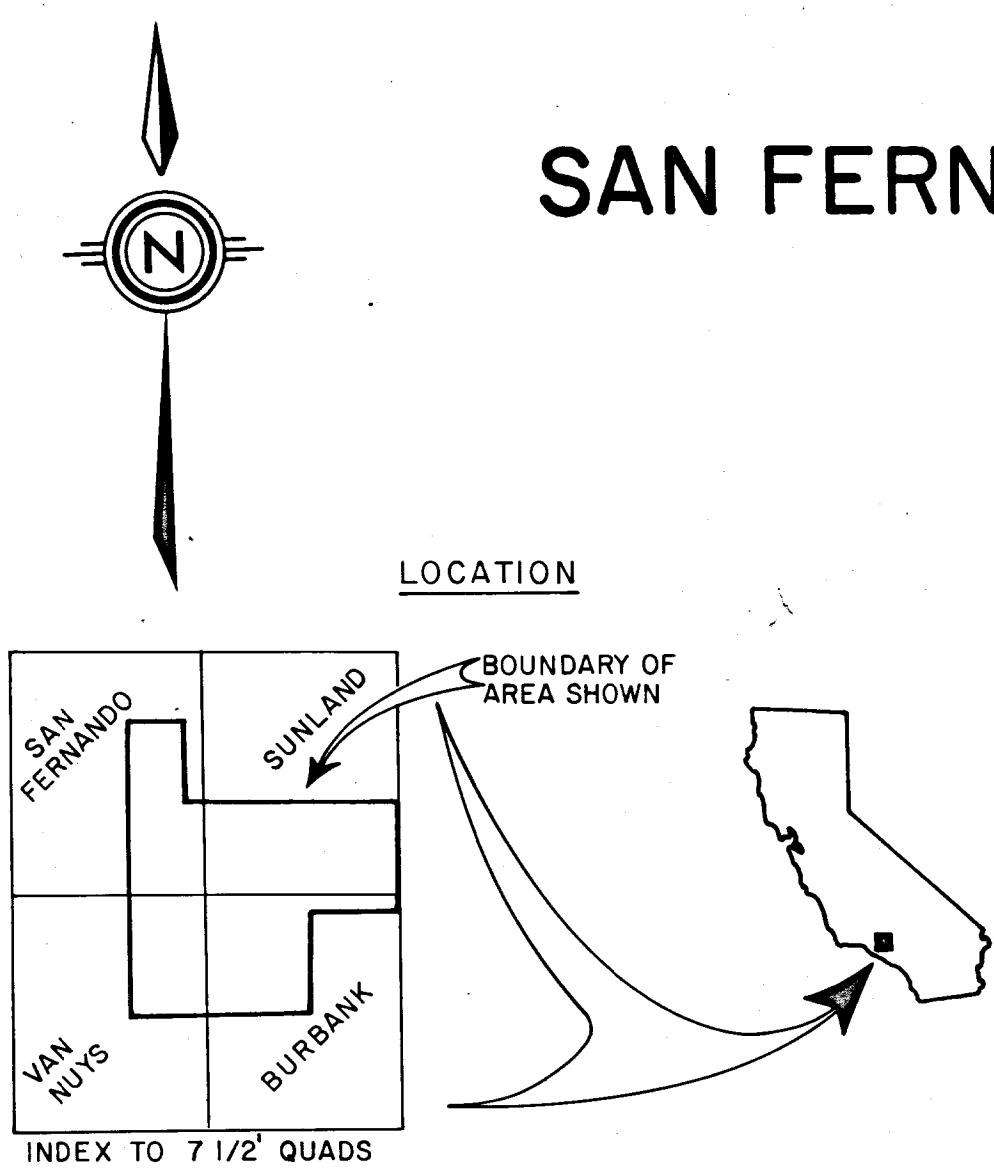
(SECTORS A THRU D WERE DESIGNATED TO BE OF REGIONAL SIGNIFICANCE, PERSUANT TO THE SURFACE MINING AND RECLAMATION ACT OF 1975, BY THE STATE MINING AND GEOLOGY BOARD, JANUARY 7, 1981.)

THIS MAP ACCOMPANIES DESIGNATION DOCUMENT FOR SAND AND GRAVEL RESOURCE AREAS IN THE SAN FERNANDO VALLEY REGION, LOS ANGELES COUNTY.

EXPLANATION

DESIGNATED AREAS (RESOURCE SECTORS)

NOTE - ARCHEOLOGICAL SITES LAN 167 & LAN 300 ARE EXCLUDED FROM DESIGNATION, THE LOCATION OF THESE SITES ARE AVAILABLE FROM THE STATE DEPT. OF PARKS AND RECREATION.



SAND AND GRAVEL AGGREGATE RESOURCES
(IN MILLIONS OF SHORT TONS, CALCULATED BY CALIFORNIA DIVISION OF MINES AND GEOLOGY STAFF, 1981)

SECTOR	RESOURCES							TOTAL (x10 ⁶)
	USE PERMITTED RESOURCES (RESERVES)			NON-PERMITTED RESOURCES				
	MEASURED	INDICATED	INFERRED	MEASURED	INDICATED	INFERRED	SPECULATIVE	
A EAST OF HANSEN DAM					65	15	85	165
B HANSEN DAM					240	60		300
C SOUTHWEST OF HANSEN DAM	30	15		10	85			140*
D PACOMA WASH					?	20		30
TOTAL	30	15		10	65	350	165	635**

* DOES NOT INCLUDE 10 MILLION SHORT TONS OF SUBECONOMIC RESOURCES
** TOTAL RESOURCES MINUS SPECULATIVE RESOURCES
REFERENCES - CALIFORNIA DIVISION OF MINES AND GEOLOGY, 1979: "MINERAL LAND CLASSIFICATION OF THE GREATER LOS ANGELES AREA", SPECIAL REPORT 143, 79 PAGES.
CALIFORNIA DIVISION OF MINES AND GEOLOGY / CALIFORNIA STATE MINING AND GEOLOGY BOARD: "FINAL E.R.A. FOR DESIGNATION OF SAND AND GRAVEL RESOURCE AREAS, SAN FERNANDO VALLEY AGGREGATE PRODUCTION-CONSUMPTION REGION, LOS ANGELES COUNTY, CALIFORNIA", 1980, 202 PAGES.