

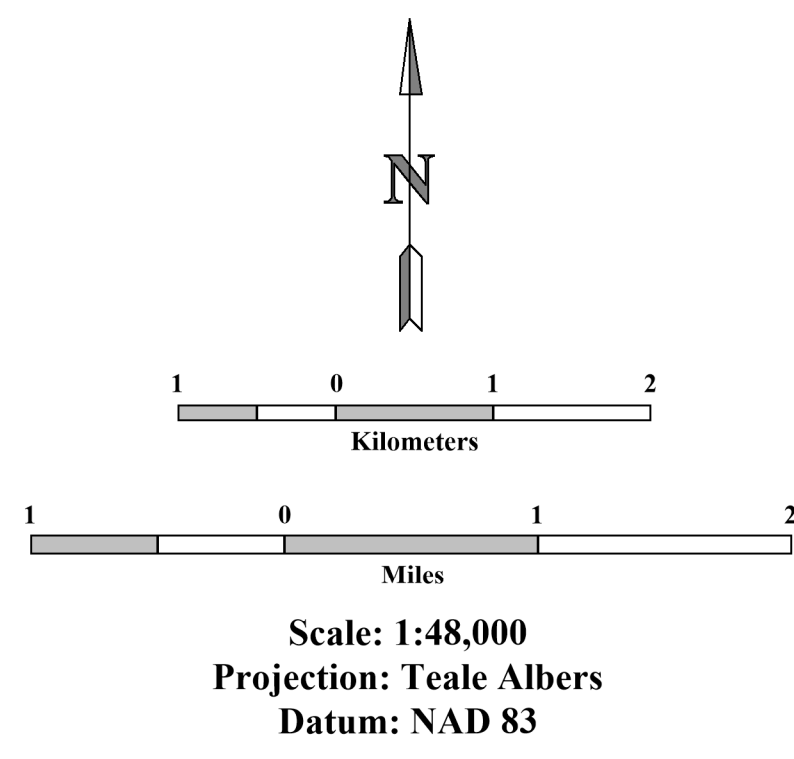
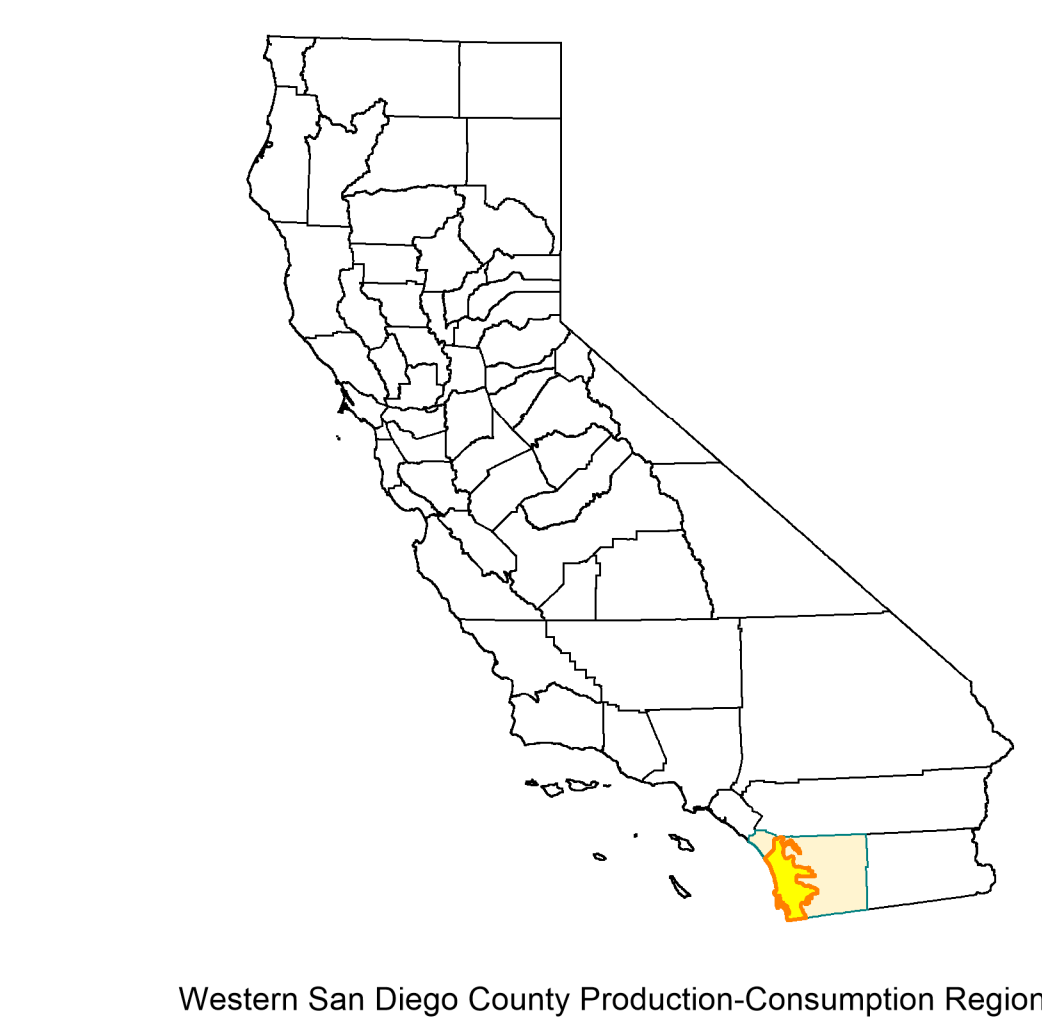
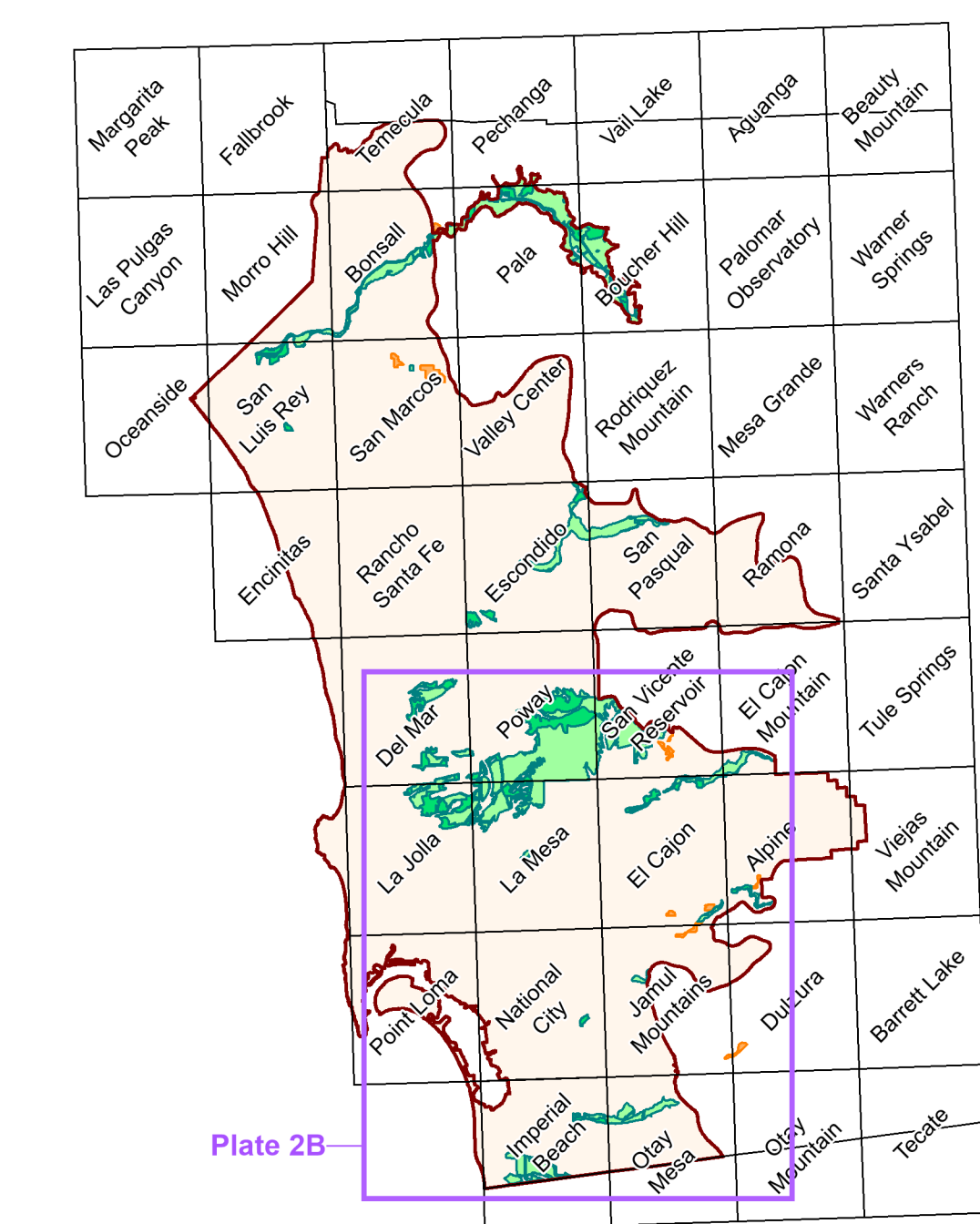
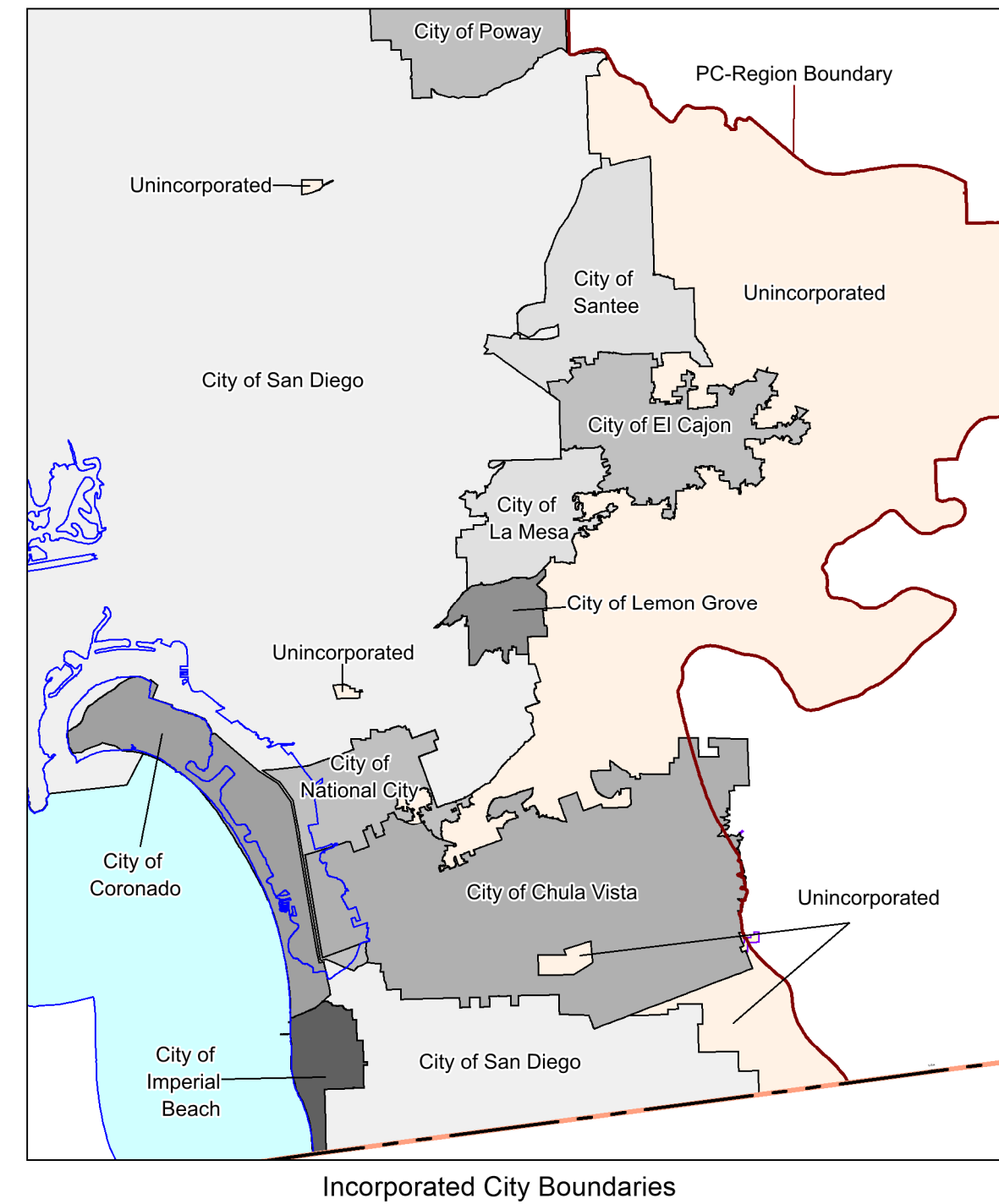
Candidate Areas for Updated Designation in the Western San Diego County Production-Consumption (P-C) Region, California - Southern Part

By
Lawrence L. Busch (PG 6440) and Russell V. Miller (PG 3331)

2018

LEGEND

- International Boundary
- Western San Diego County Production-Consumption Region Boundary
- Sector Boundary emphasized for clarity
- Designated Sectors - Sectors designated by the State Mining and Geology Board (1985) as containing regionally significant Portland Cement Concrete-grade aggregate resources
- Designated Sectors depleted by mining or lost to land uses incompatible with mining since 1985
- New Sectors
- Incorporated City Boundary



Sources of Digital Base Layers:
Municipal Boundaries - County of San Diego, Assessors Office
Topographic Quadrangles - U.S.G.S.

California Geological Survey Web Site:
<http://www.conservation.ca.gov/cgs>



Copyright © 2018 by the California Department of Conservation.
All rights reserved. No part of this publication may be reproduced
without written consent of the California Department of Conservation.
The California Department of Conservation makes no warranties
as to the suitability of this product for any particular purpose.

GIS Design and Map Layout by Milton Fonseca

