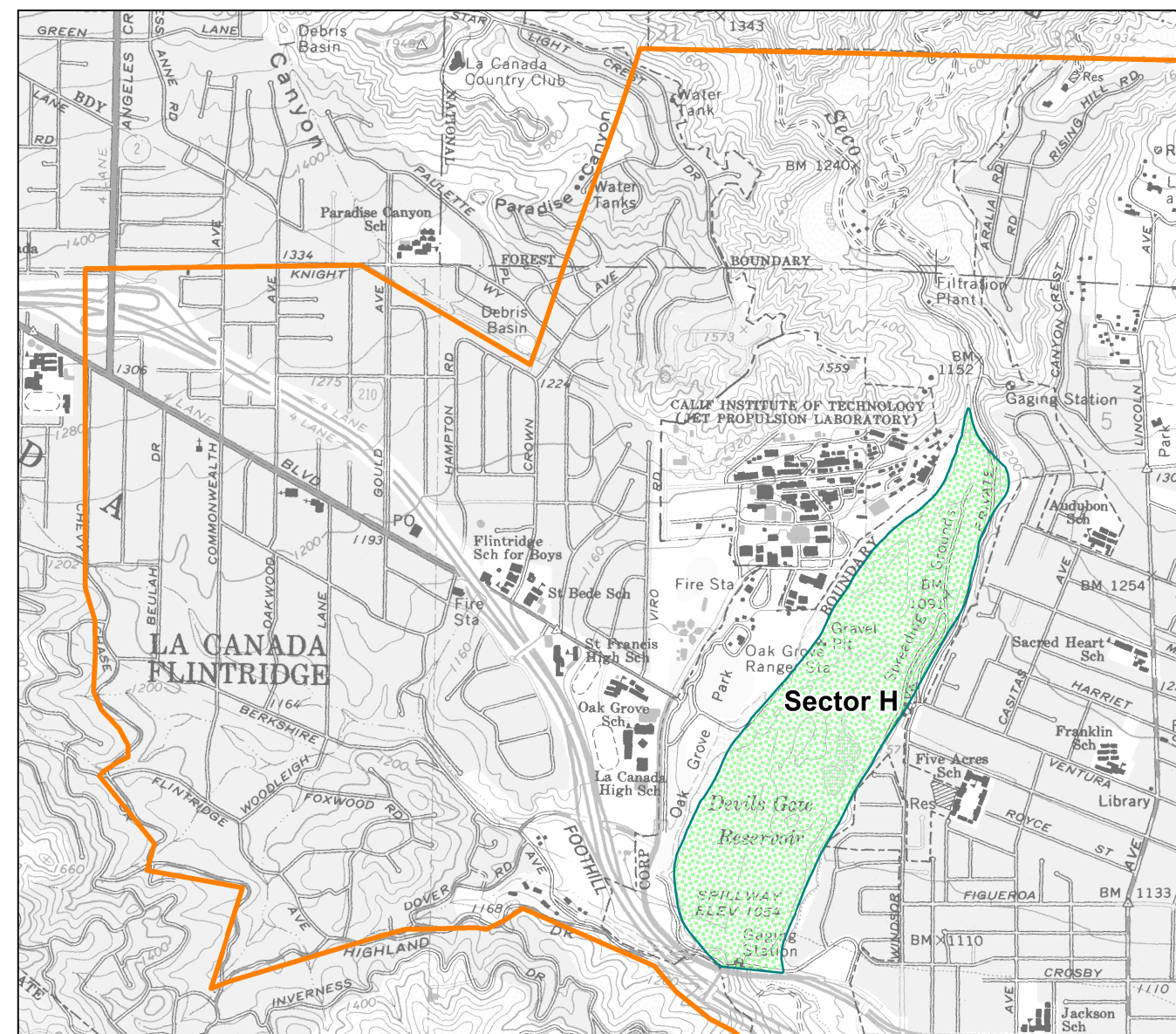
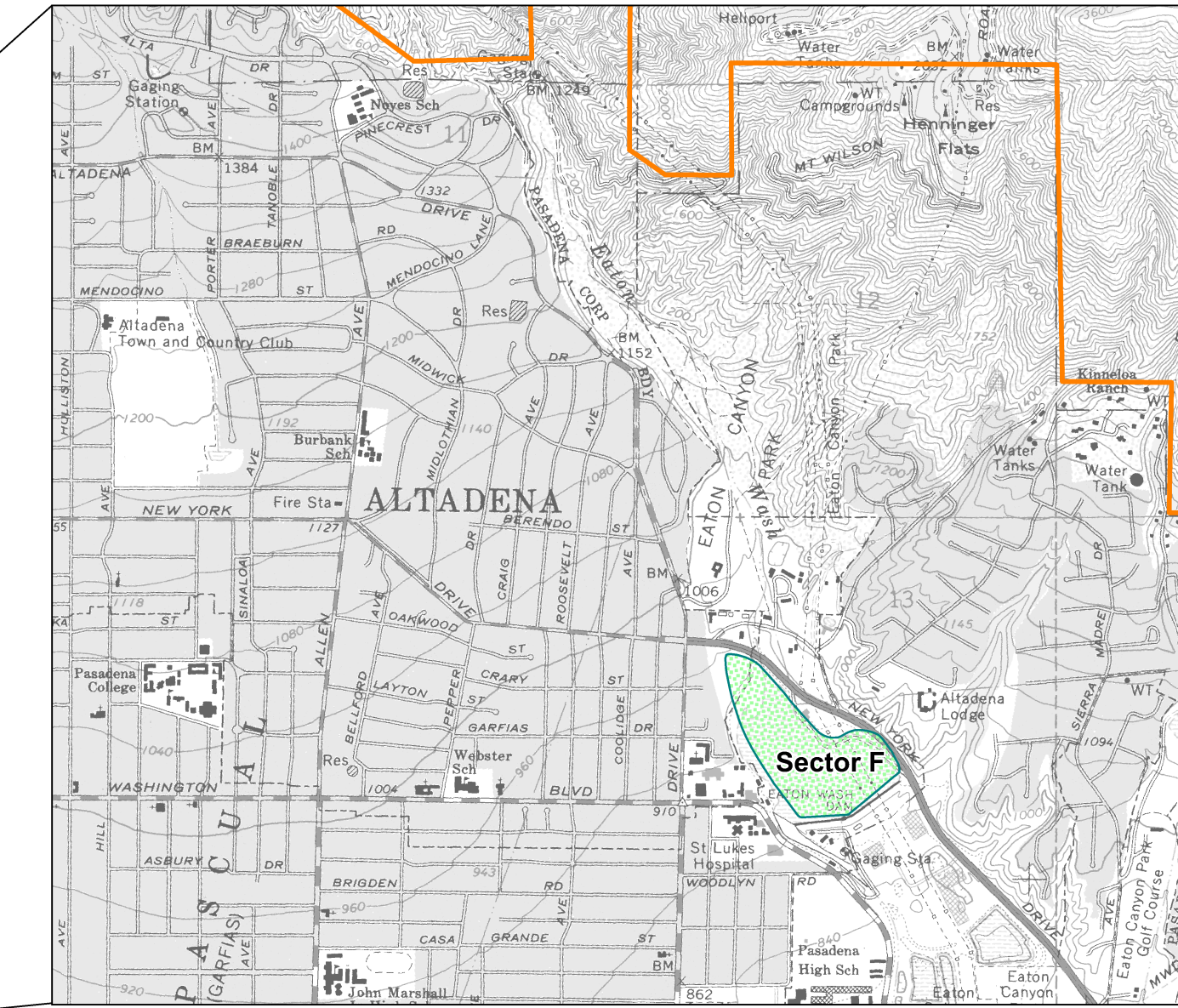


# Candidate Areas for Updated Designation in the Eaton Wash, Devils Gate Reservoir, and Palos Verdes Areas

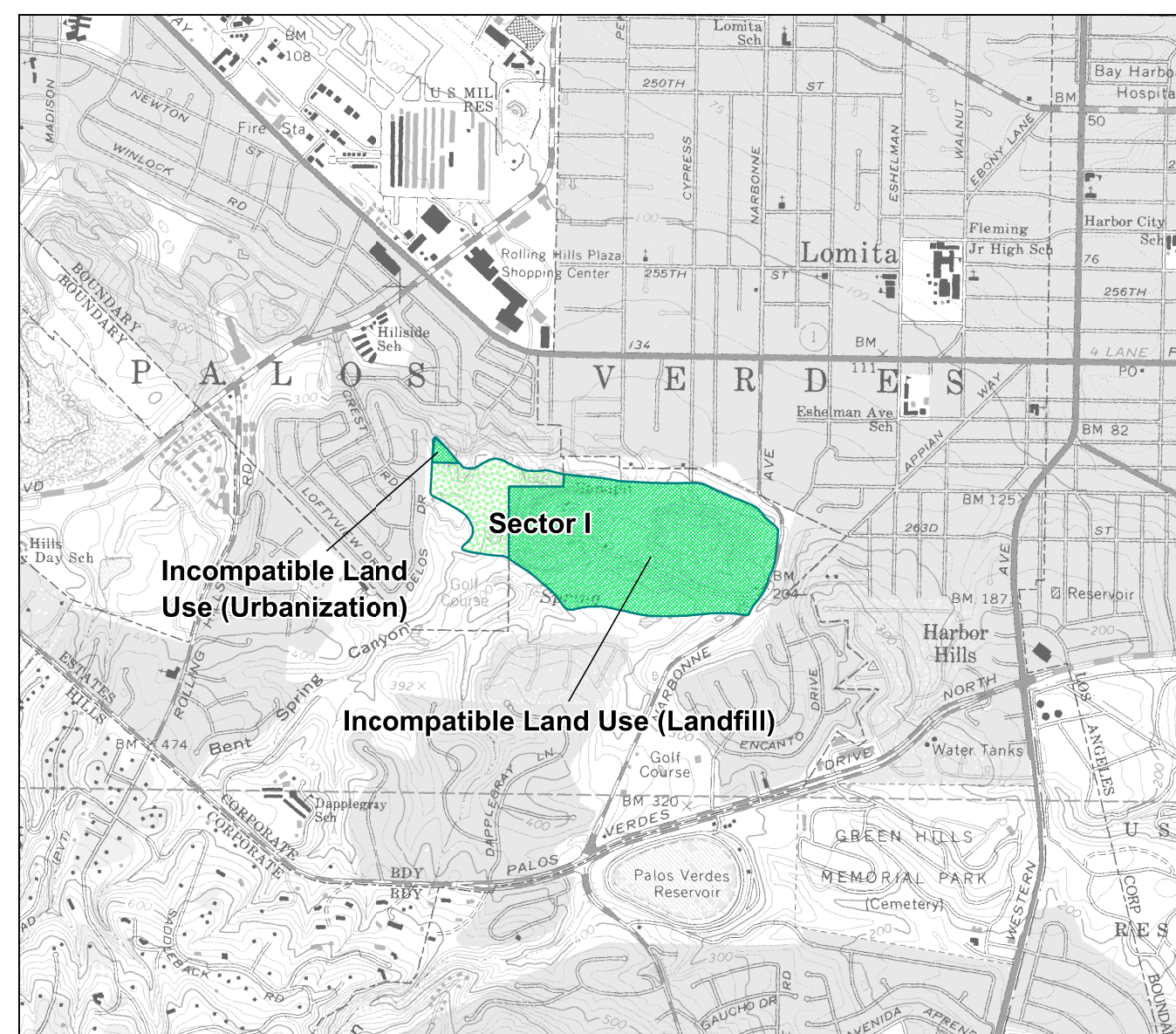
By  
Susan Kohler  
(PG 3792)  
2011



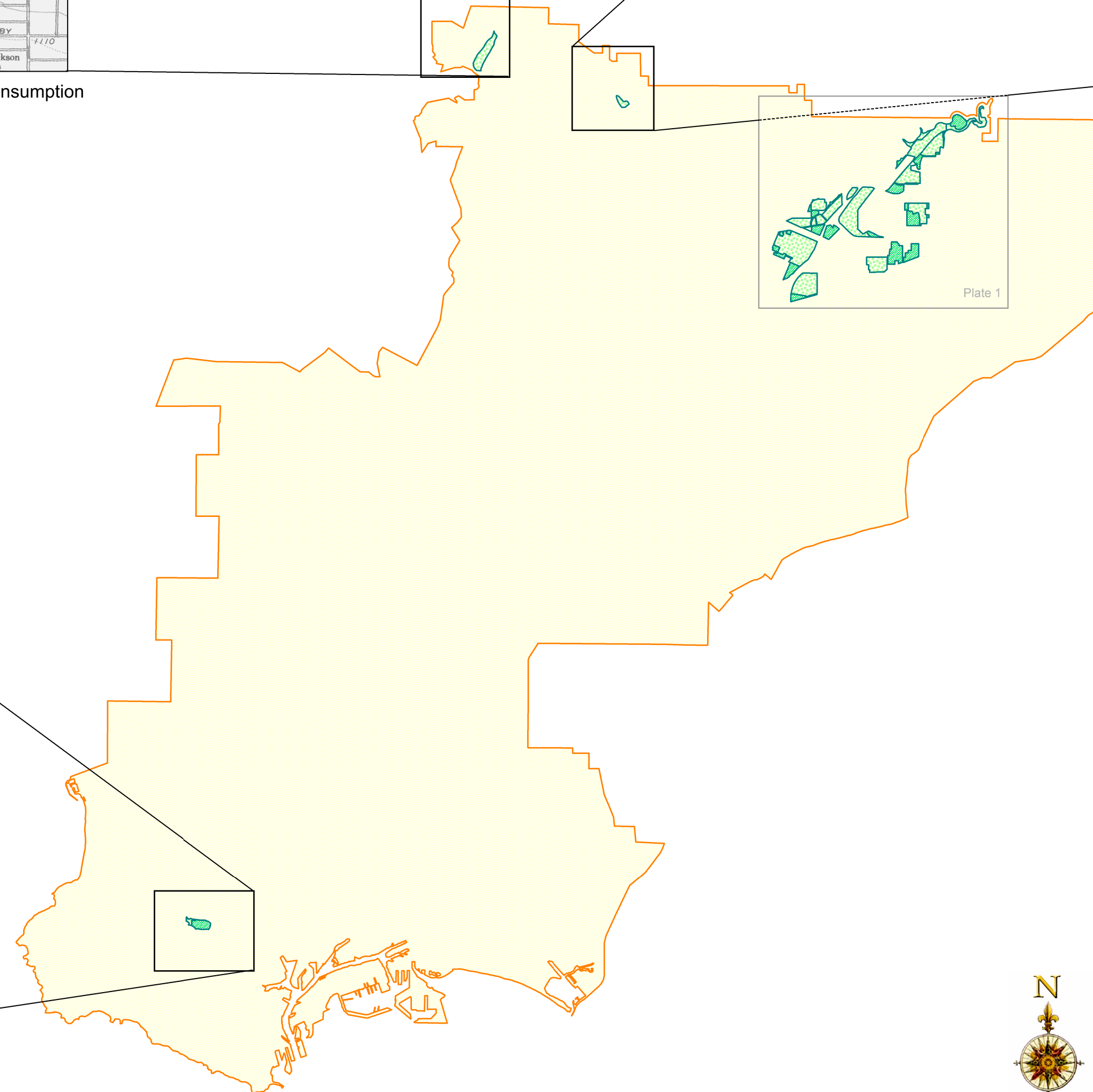
Location of Devils Gate Reservoir (Sector H) Within San Gabriel Valley Production-Consumption Area (Scale 1:24,000)




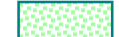

Location of Eaton Wash (Sector F) Within San Gabriel Valley Production-Consumption Area (Scale 1:24,000)

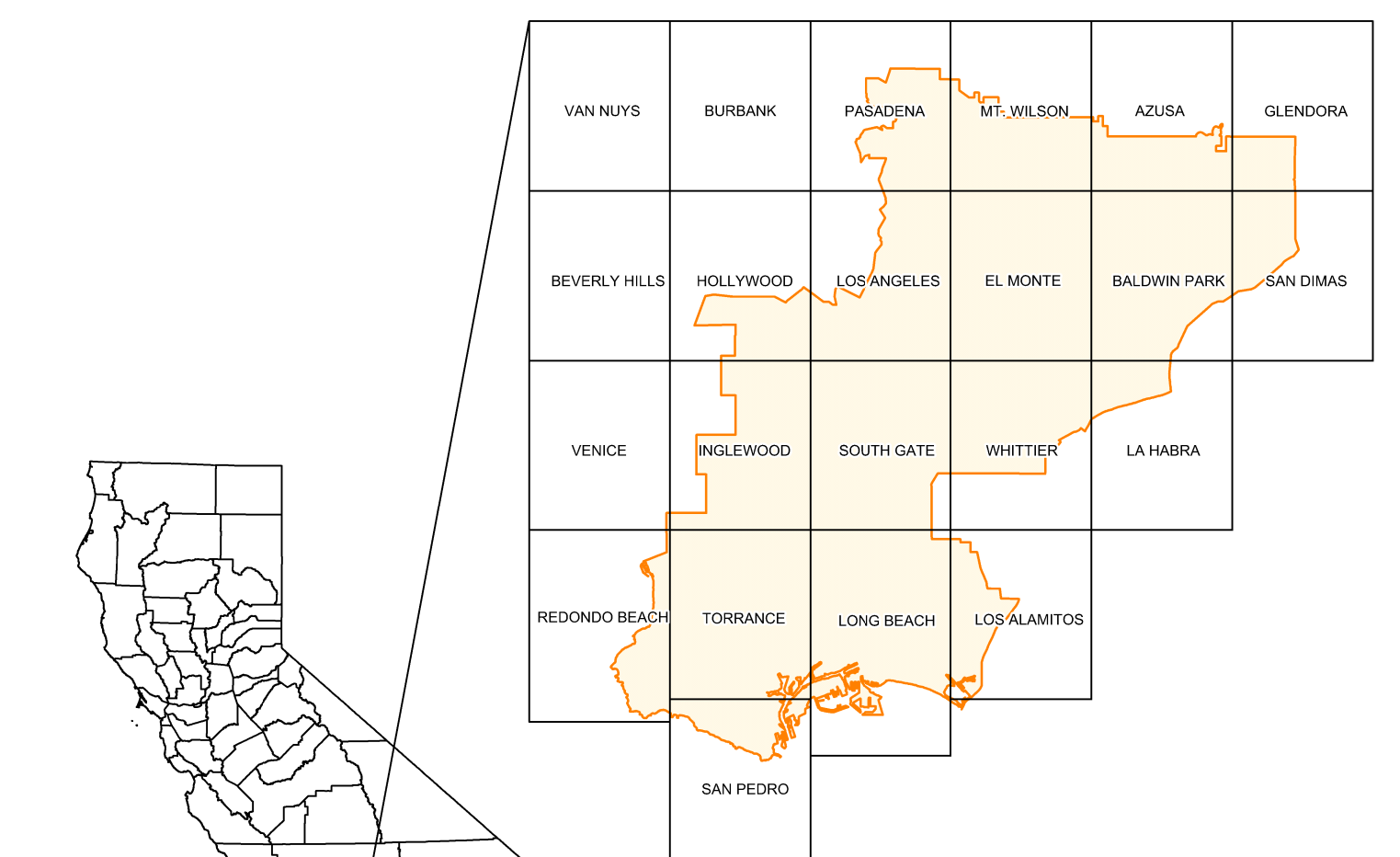
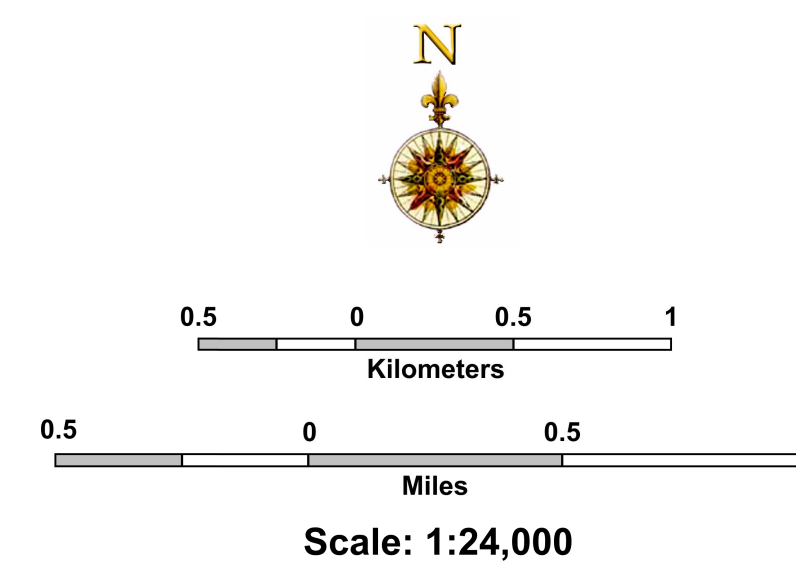


Location of Palos Verdes (Sector I) Within San Gabriel Valley Production-Consumption Area (Scale 1:24,000)



### LEGEND

-  Boundary of San Gabriel Valley Production-Consumption Region.
-  Sectors designated by the State Mining and Geology Board (1984) as containing regionally significant PCC-grade aggregate resources.
-  Areas within Sectors with Land Uses Incompatible with Mining.



Index of U.S.G.S. 7.5 Minute Quadrangles



Copyright © 2011 by the California Department of Conservation.  
All rights reserved. No part of this publication may be reproduced  
without written consent of the California Department of Conservation.

The California Department of Conservation makes no warranties  
as to the suitability of this product for any particular purpose.

Map Sources (Digital GIS Layers):  
7.5-Minute Topographic Quadrangles: U.S. Geological Survey

California Geological Survey Web Site: <http://www.consrv.ca.gov/cgs/>

GIS Development and Map Layout by Milton Fonseca