

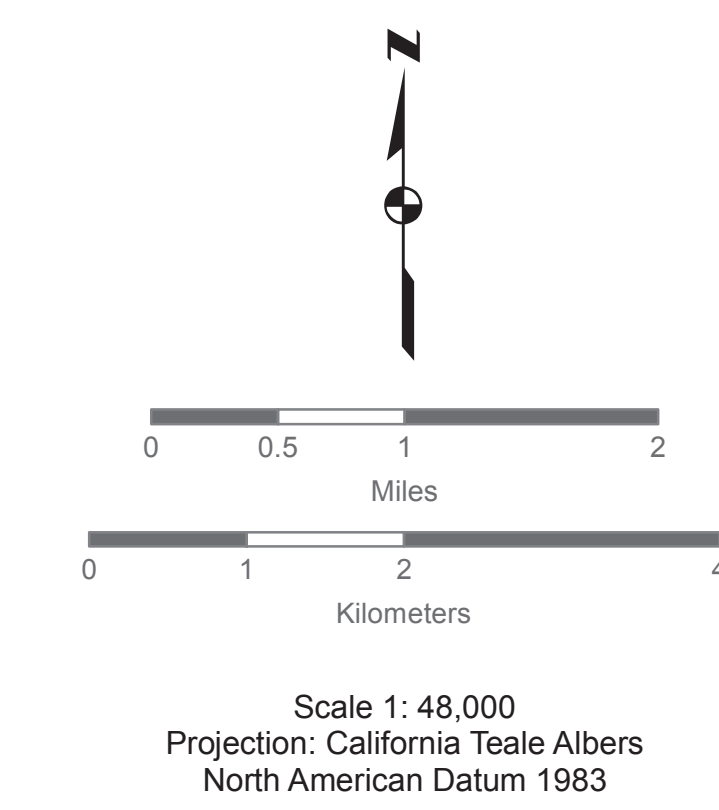
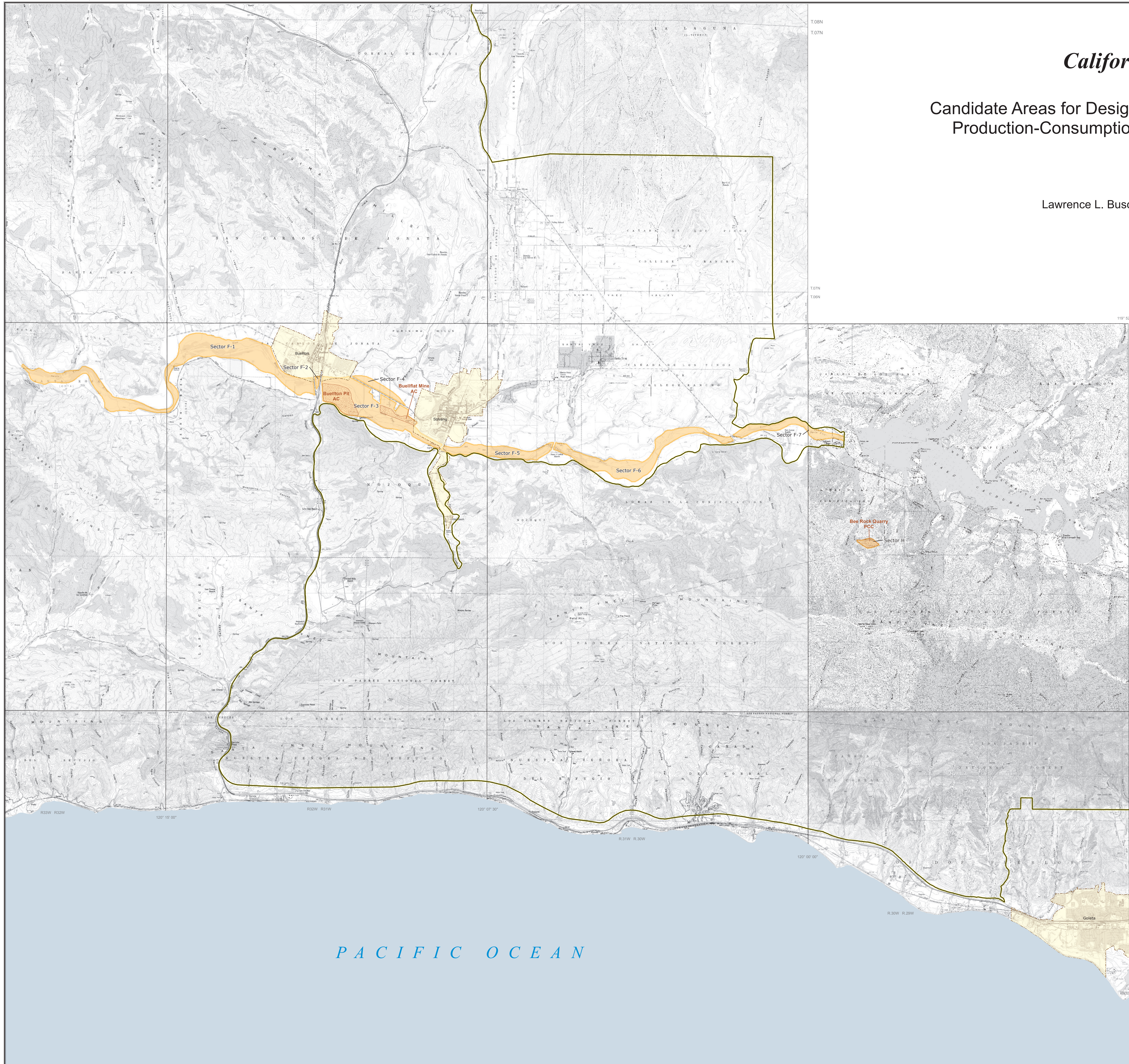
# California Geological Survey

## Candidate Areas for Designation in the San Luis Obispo-Santa Barbara Production-Consumption (P-C) Region, California - Southern Part





By

Lawrence L. Busch (PG 6440) and Russell V. Miller (PG 3331)

2011



### Legend

-  Incorporated City
-  Sectors: Areas classified MRZ-2 for Concrete-Grade (PCC-Grade and AC-Grade) Aggregate having current land uses deemed compatible with potential mining at the time of this study.
-  AC-Grade and PCC-Grade Aggregate Producers.
-  San Luis Obispo-Santa Barbara Production-Consumption Region

