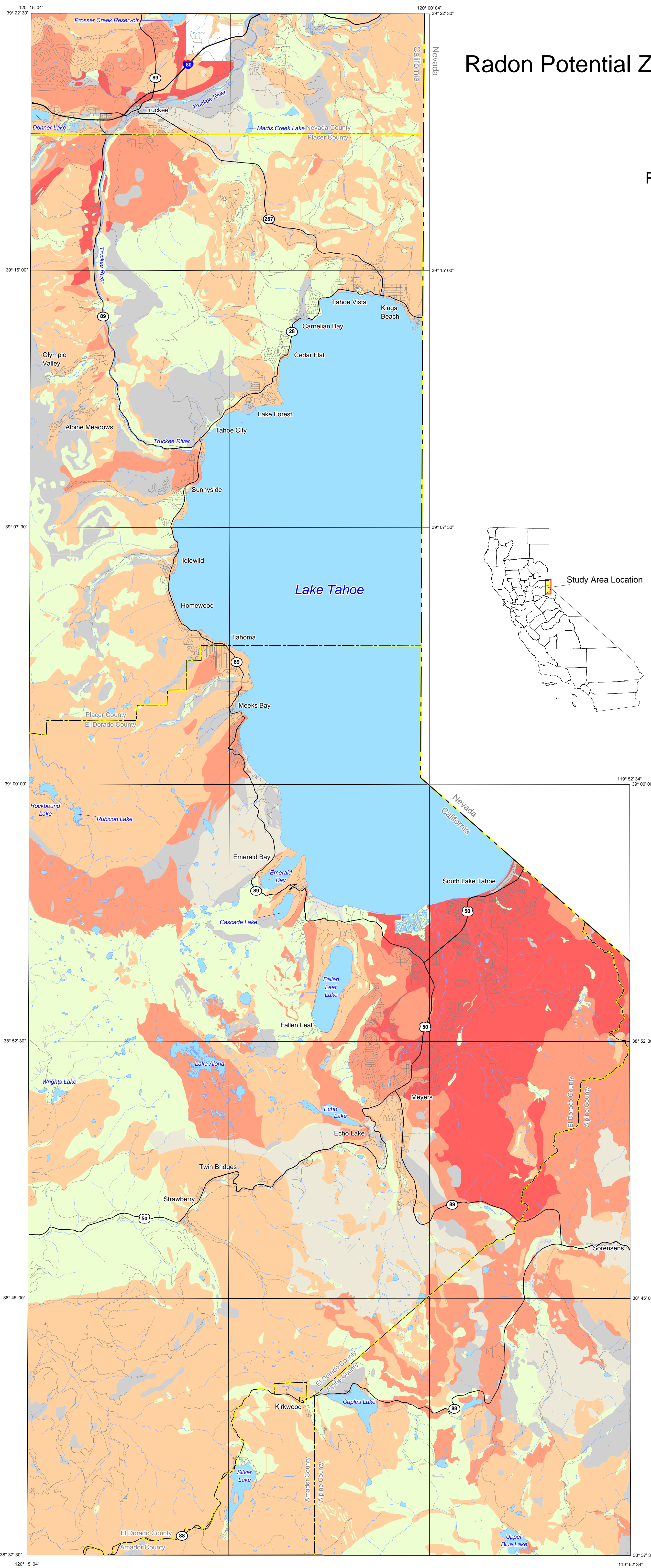
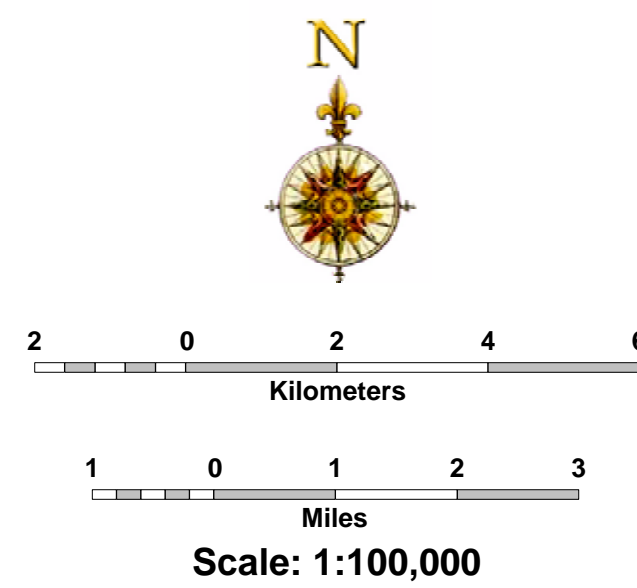


Radon Potential Zone Map for the Lake Tahoe Area, California

By

Ronald K. Churchill, Ph.D.
(PG #4265)

April 2009



Radon Zone Definitions

- Very High Potential For Indoor Radon Levels Above Four Picocuries Per Liter**
- High Potential For Indoor Radon Levels Above Four Picocuries Per Liter**
- Moderate Potential For Indoor Radon Levels Above Four Picocuries Per Liter**
- Low Potential For Indoor Radon Levels Above Four Picocuries Per Liter**
- Unknown Potential For Indoor Radon Levels Above Four Picocuries Per Liter**

** The U.S. Environmental Protection Agency (EPA) recommends four picocuries per liter as the action level for radon reduction.

Base Map Layers

- Interstate Route
- US Route
- State Route
- Secondary Route/ Street
- County Boundary
- State Boundary
- River
- Stream
- Lake

MAP USAGE AND LIMITATIONS

This map identifies areas where geologic conditions are more likely to produce excessive indoor radon levels. The map is intended to be advisory only. It is intended to assist national, state and local governments and organizations in targeting their radon program activities and resources. This map is not intended for determining which buildings have excessive indoor radon levels. Besides geology, local variability in such factors as soil permeability, weather and climatic conditions, building design and condition, and building usage also influence indoor radon levels. Consequently, building-specific radon levels can only be determined by indoor radon testing. No warranty as to actual radon levels at specific sites is expressed or implied by this map or the accompanying report.

The U.S. Environmental Protection Agency (EPA) recommends that all homes be tested for radon whatever their geographic location. Homes with elevated radon levels have been found in all zones within the Lake Tahoe area. The U.S. EPA recommends that action be taken to reduce radon in homes with an average annual level higher than four picocuries per liter (4 pCi/l).

Questions regarding this map should be directed to:

California Department of Public Health, Radon Program,
Telephone: (916) 449-5674
Email: GeorgeFaggella@cdph.ca.gov

California Geological Survey
Telephone: (916) 323-7696
Email: mrmhmp@consv.ca.gov

Additional information about radon can be found at the following websites:

California Department of Public Health, Radon Program:
<http://www.cdph.ca.gov/healthinfo/environhealth/Pages/Radon.aspx>
California Geological Survey-Mineral Resources Program:
http://www.conservacion.ca.gov/cgs/minerals/hazardous_minerals/radon/Pages/Index.aspx
U.S. EPA: <http://www.epa.gov/iaq/radon/>

Map Sources (Digital GIS Layers):

Hydrography - GDT, April 2004
Roads - GDT, April 2004



Copyright © 2009 by the California Department of Conservation, California Geological Survey. All rights reserved. No part of this publication may be reproduced without written consent of the California Geological Survey.
A PDF version of the radon zone maps is available from the California Department of Conservation, California Geological Survey, 801 K Street, MS 08-38, Sacramento, CA 95814-3531.

