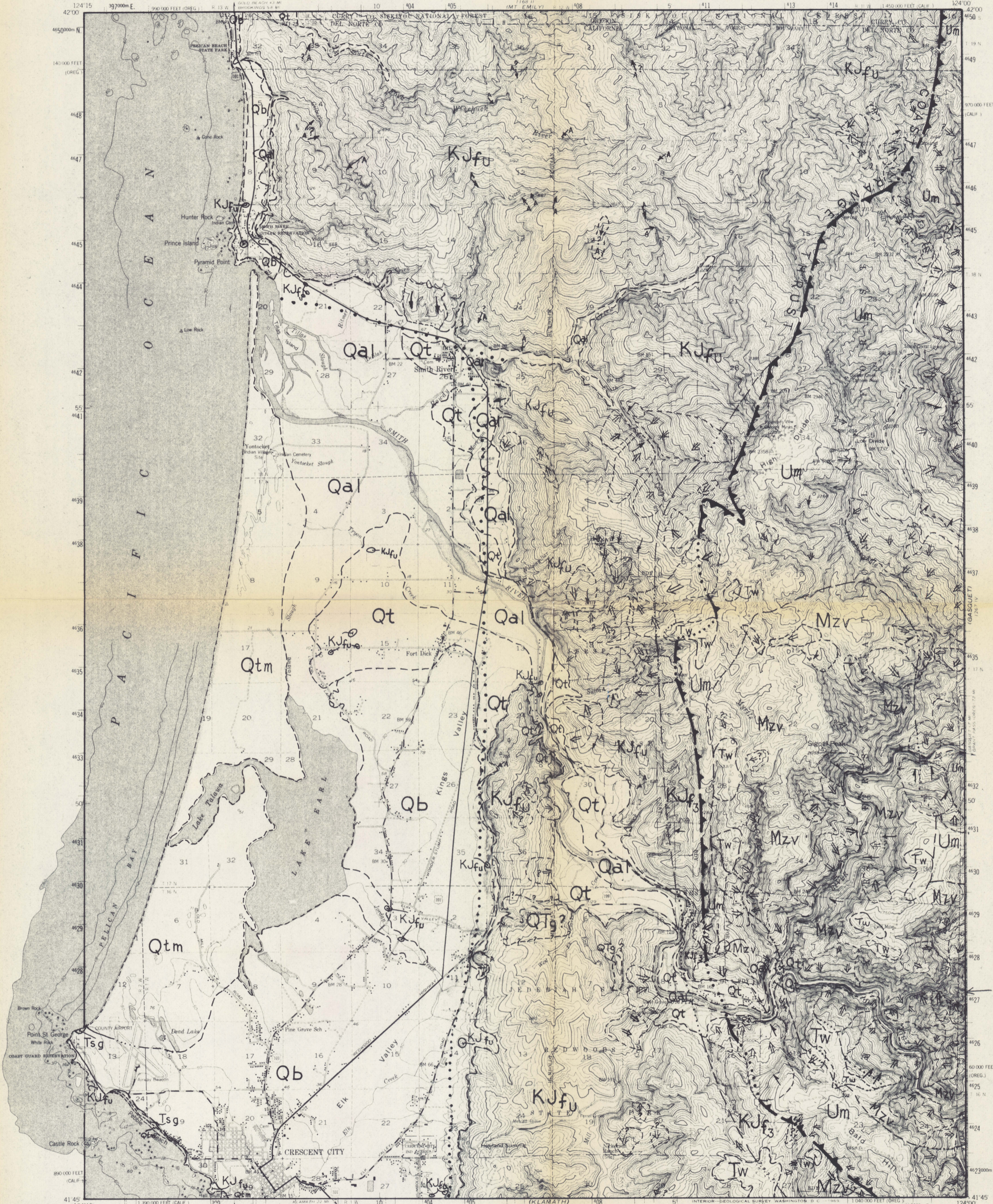


UNITED STATES
 DEPARTMENT OF THE INTERIOR
 GEOLOGICAL SURVEY

UNITED STATES
 DEPARTMENT OF THE ARMY
 CORPS OF ENGINEERS

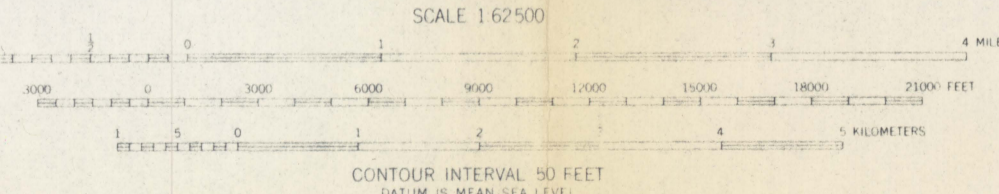
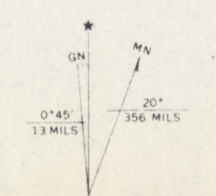
CRESCENT CITY QUADRANGLE
 CALIFORNIA-OREGON
 15-MINUTE SERIES (TOPOGRAPHIC)



Mapped by the Army Map Service
 Edited and published by the Geological Survey,
 Control by USGS and USC&GS

Topography from aerial photographs by KER plotter methods 1943
 Aerial photographs taken 1942. Culture revision by USGS 1952
 Hydrography compiled from USC&GS charts 5895 and 5896
 Polyconic projection, 1927 North American datum
 10,000 foot grids based on California coordinate system, zone 1
 and Oregon coordinate system, south zone

Red tint indicates areas in which only landmark buildings are shown
 Dashed land lines indicate approximate locations
 1000-meter Universal Transverse Mercator grid ticks,
 zone 10, shown in blue



ROAD CLASSIFICATION

Heavy duty	Light duty
Medium duty	Unimproved dirt
U.S. Route	

The west half of this area also covered
 by 1:24,000-scale maps of Smith River
 and Crescent City 7.5 minute quadrangles surveyed 1956
CRESCENT CITY, CALIF.-OREG.
 N4145-W12400/15

SPECIAL PRINTING
 Contours and woodland symbols omitted