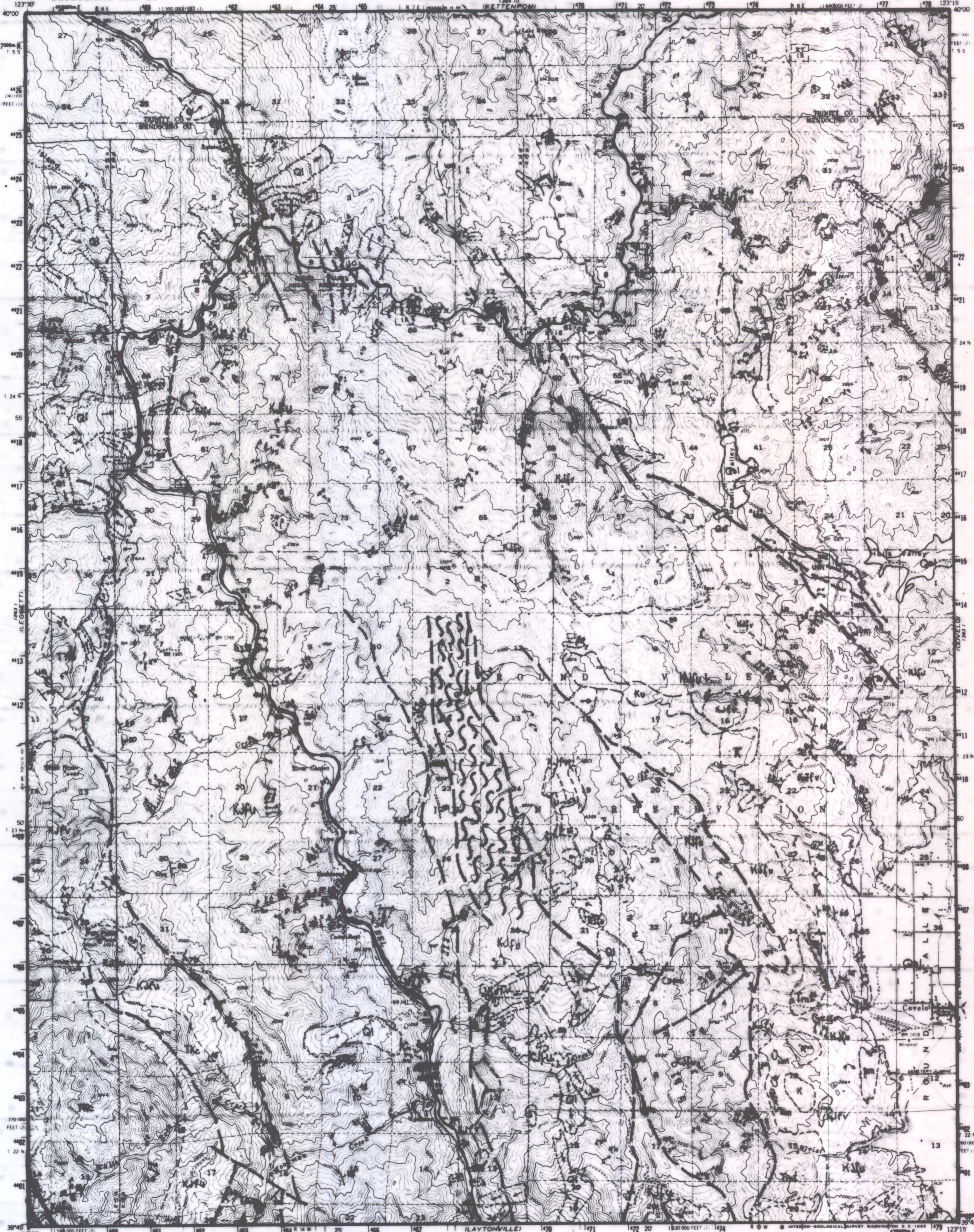


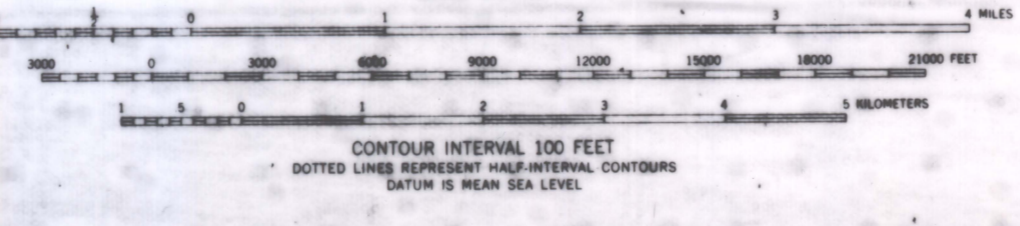
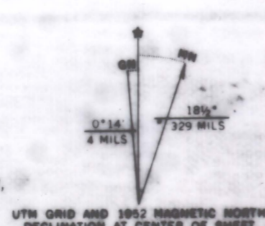
UNITED STATES
 DEPARTMENT OF THE INTERIOR
 GEOLOGICAL SURVEY

STATE OF CALIFORNIA
 GOODWIN J. KNIGHT, GOVERNOR
 FRANK B. DURKEE, DIRECTOR OF PUBLIC WORKS
 A. D. EDMONSTON, STATE ENGINEER

SPYROCK QUADRANGLE
 CALIFORNIA
 15 MINUTE SERIES (TOPOGRAPHIC)



Maped, edited, and published by the Geological Survey
 Control by USGS and USCAGS
 Topography from aerial photographs by multiple methods
 Aerial photographs taken 1948. Field check 1952
 Polyconic projection, 1927 North American datum
 10,000-foot grid based on California coordinate system, zones 1 and 2
 Dashed land lines indicate approximate locations
 Numbered tracts are shown in T. 24 N. and T. 5 S., between Eel River,
 North Fork of Eel River, and Halls Creek
 1000-meter Universal Transverse Mercator grid ticks,
 zone 10, shown in blue



ROAD CLASSIFICATION

Heavy-duty	—+—+—+—+—+—+—+—+—+—	Light-duty	—+—+—+—+—+—+—+—+—+—
Medium-duty	—+—+—+—+—+—+—+—+—+—	Unimproved dirt
U. S. Route	□	State Route	○



SPYROCK, CALIF
 N3945-W12315/15
 1952
 AMS 1953 IV-SERIES 7795

THIS MAP COMPLIES WITH NATIONAL MAP ACCURACY STANDARDS
 FOR SALE BY U. S. GEOLOGICAL SURVEY, DENVER 25, COLORADO OR WASHINGTON 25, D. C.
 A FOLDER DESCRIBING THE TOPOGRAPHIC MAPS AND SYMBOLS IS AVAILABLE ON REQUEST

SPECIAL PRINTING
 Contours and woodland symbols omitted