

STATE OF CALIFORNIA
 THE RESOURCES AGENCY
 DEPARTMENT OF FORESTRY
 REGION 1 GEOLOGY GROUP
SANTA ROSA SLIDES

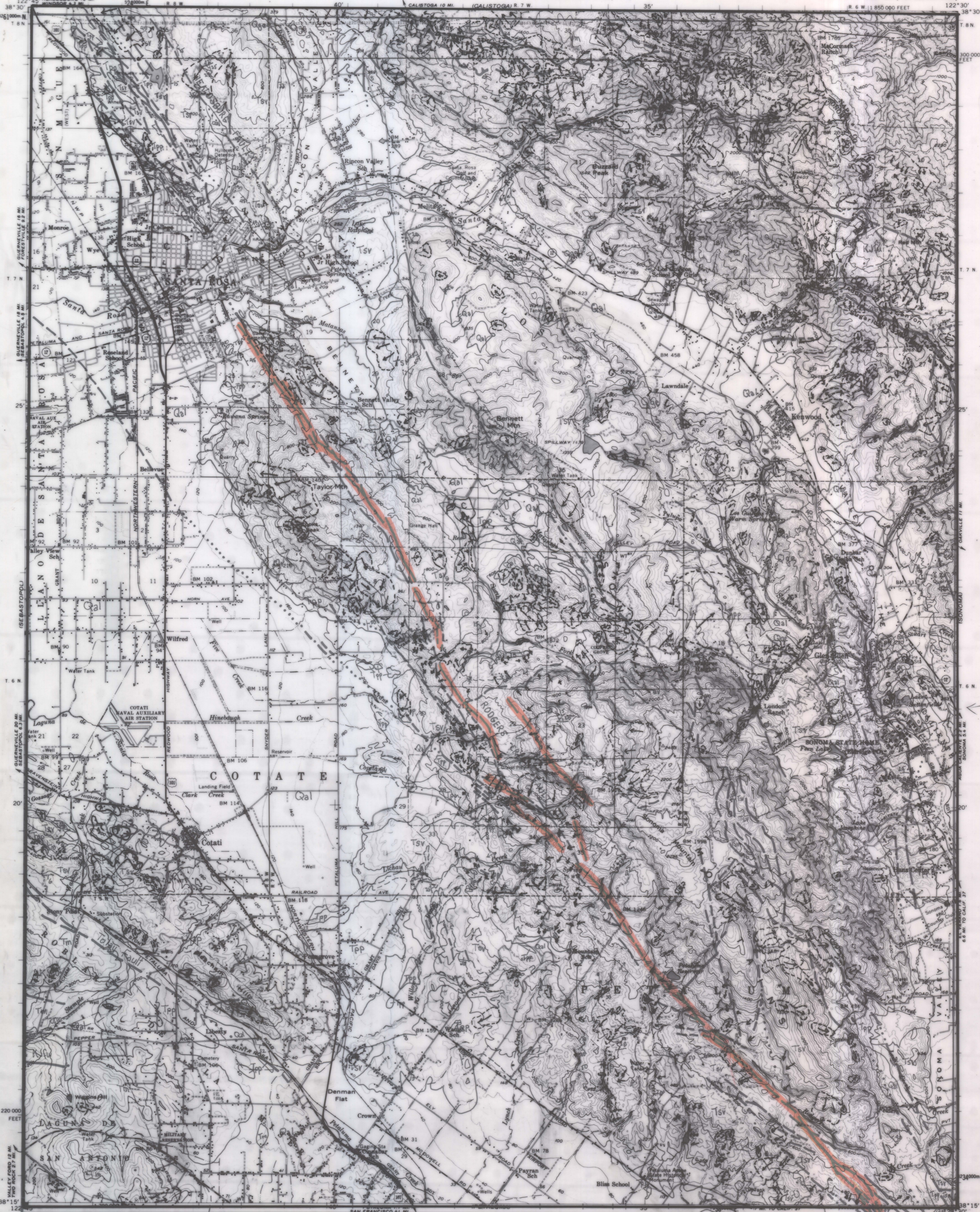
STATE OF CALIFORNIA
 THE RESOURCES AGENCY
 DEPARTMENT OF FORESTRY
 REGION 1 GEOLOGY GROUP

**GEOLOGIC MAP
 SANTA ROSA
 QUADRANGLE**
 Compiled by J. B. Durham Date 4-79
 Approved by E. Hoffman CDME
**SANTA ROSA QUADRANGLE
 CALIFORNIA**
 15 MINUTE SERIES (TOPOGRAPHIC)

UNITED STATES
 DEPARTMENT OF THE INTERIOR
 GEOLOGICAL SURVEY

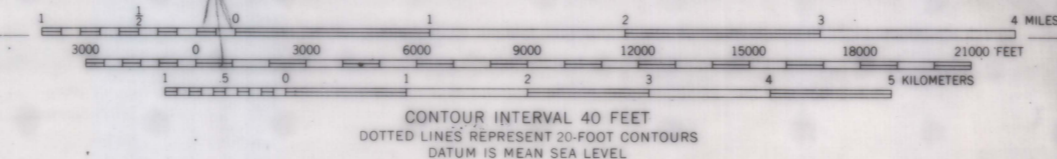
STATE OF CALIFORNIA
 EDMUND G. BROWN, GOVERNOR
 HARVEY O. BANKS, DIRECTOR OF WATER RESOURCES

R. & W. 1:850,000 FEET
 122° 30' 38" W
 38° 15' 00" N



Mapped, edited, and published by the Geological Survey
 Control by USGS and USC&GS
 Compiled in 1958 from 1:24,000-scale maps of
 Kenwood, Santa Rosa, Cotati, and Glen Ellen
 7.5 minute quadrangles, surveyed 1954
 Topography from aerial photographs by photogrammetric methods
 and by planimetric surveys 1954. Aerial photographs taken 1952
 Polyconic projection. 1927 North American datum
 10,000 foot grid based on California coordinate system, zone 2
 1000-meter Universal Transverse Mercator grid ticks,
 zone 10, shown in blue
 Red tint indicates area in which only landmark buildings are shown
 Dashed land lines indicate approximate locations

TRUE NORTH
 MAGNETIC NORTH
 APPROXIMATE MEAN
 DECLINATION, 1954



ROAD CLASSIFICATION
 Heavy-duty ——— Light-duty ———
 Medium-duty ——— Unimproved dirt ———
 U. S. Route ——— State Route ———



THIS MAP COMPLIES WITH NATIONAL MAP ACCURACY STANDARDS
 FOR SALE BY U. S. GEOLOGICAL SURVEY DENVER 2, COLORADO OR WASHINGTON 25, D. C.
 A FOLDER DESCRIBING TOPOGRAPHIC MAPS AND SYMBOLS IS AVAILABLE ON REQUEST

This area also covered by 1:24,000-scale maps of
 Kenwood, Santa Rosa, Cotati, and Glen Ellen
 7.5 minute quadrangles, surveyed 1954
SANTA ROSA, CALIF.
 N3815-W12230/15
 1954