

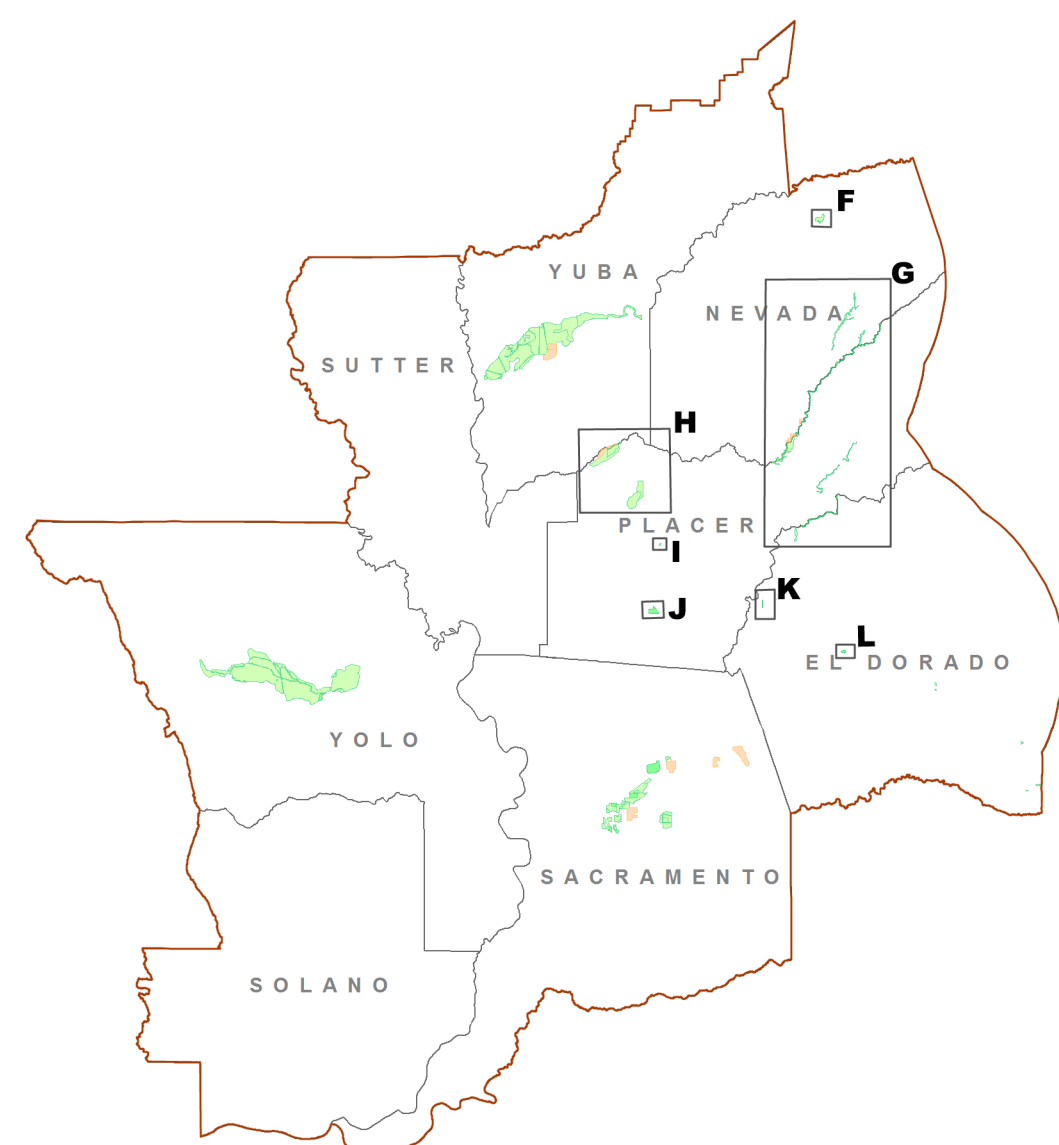
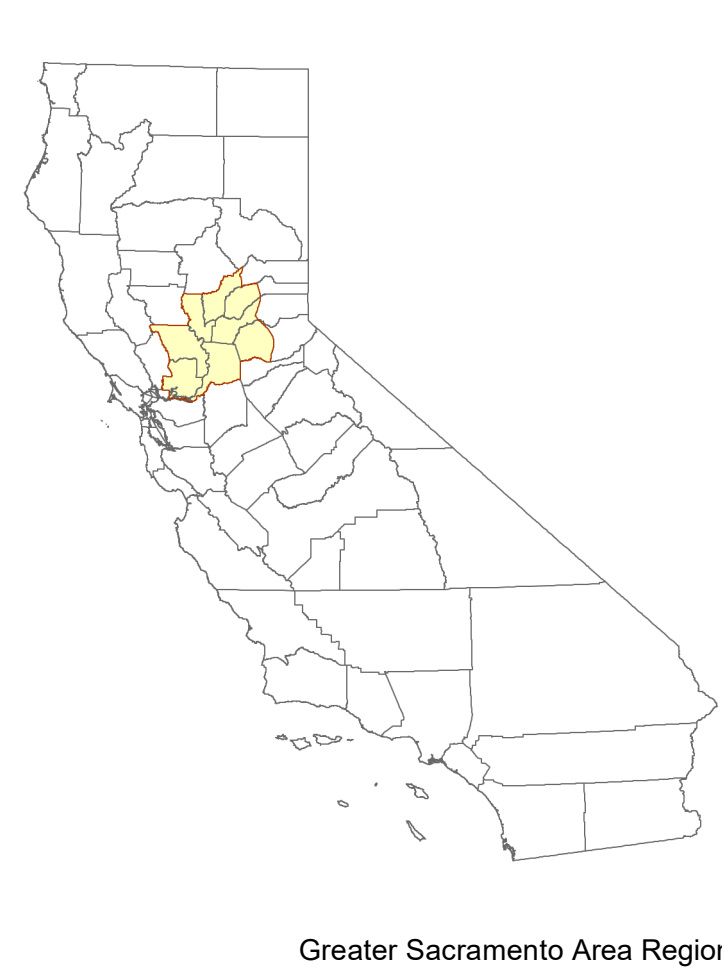
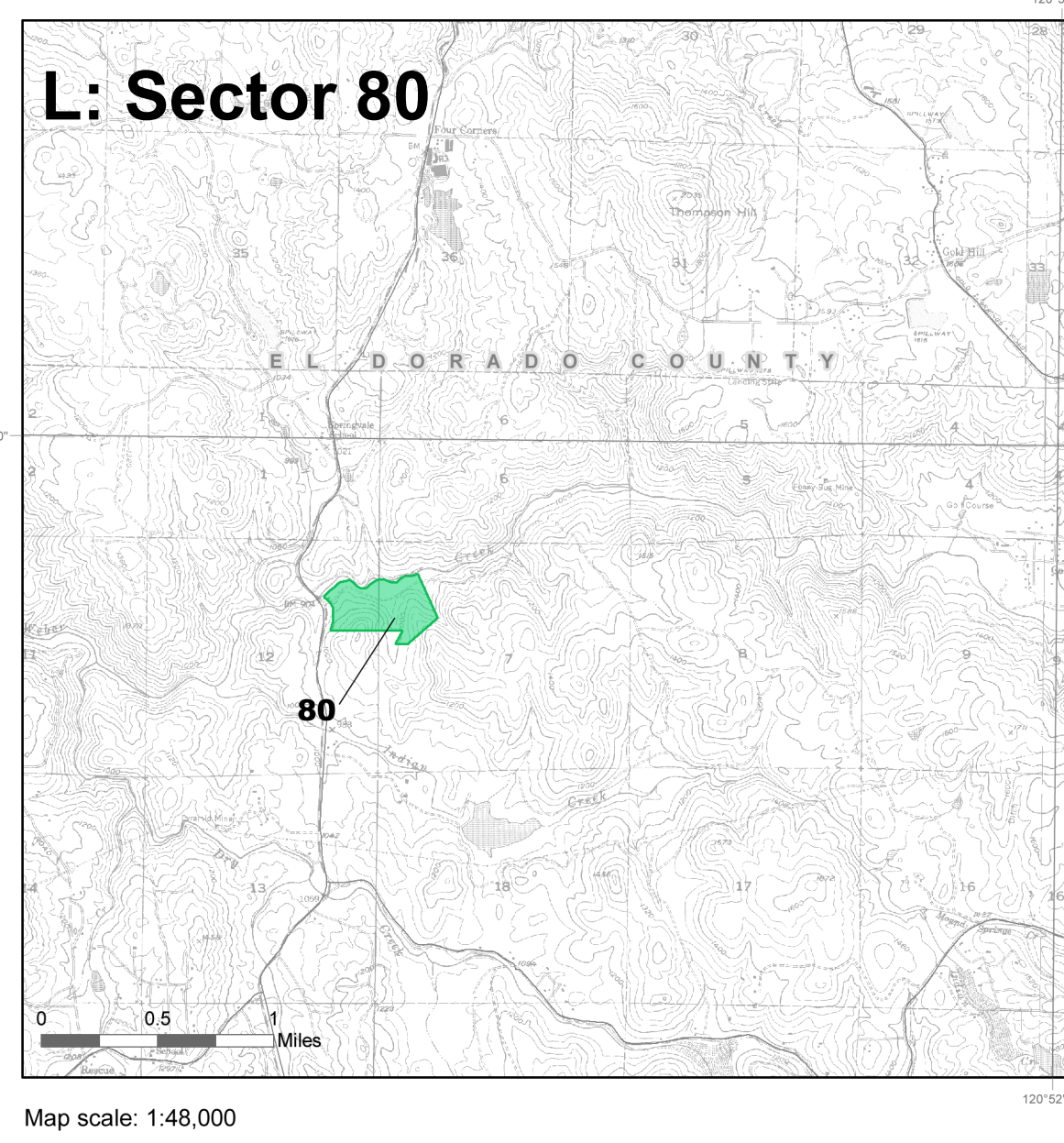
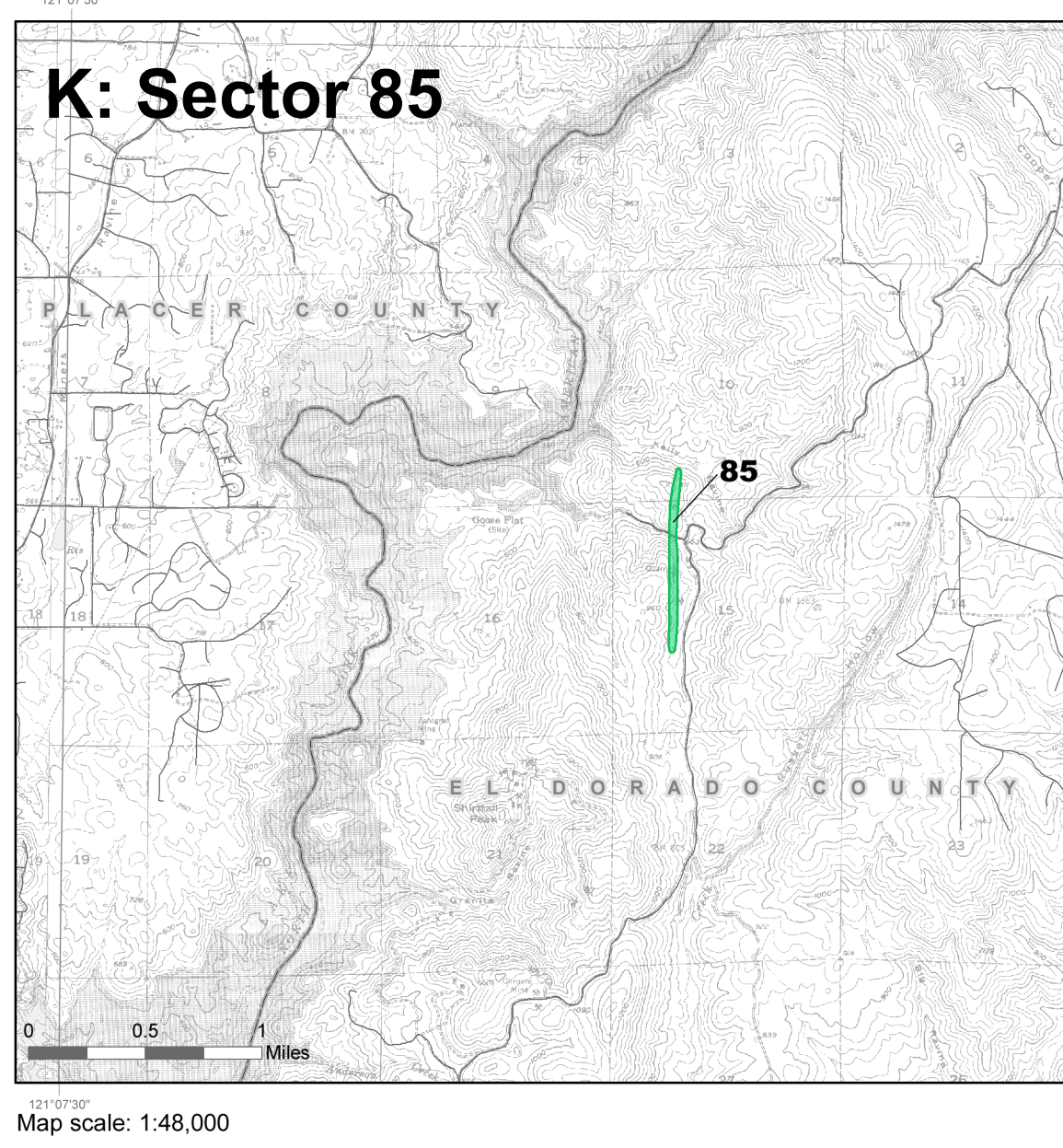
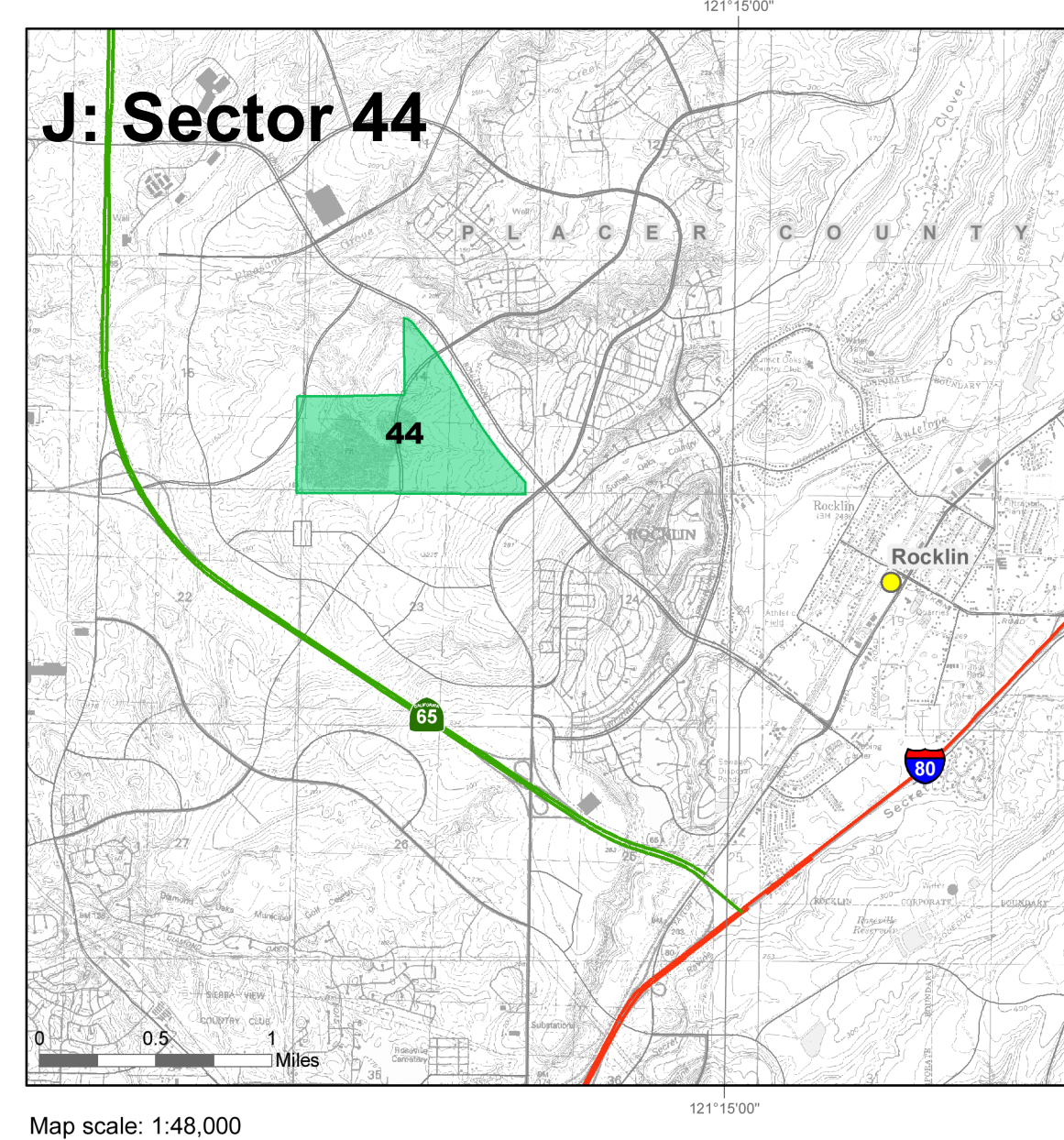
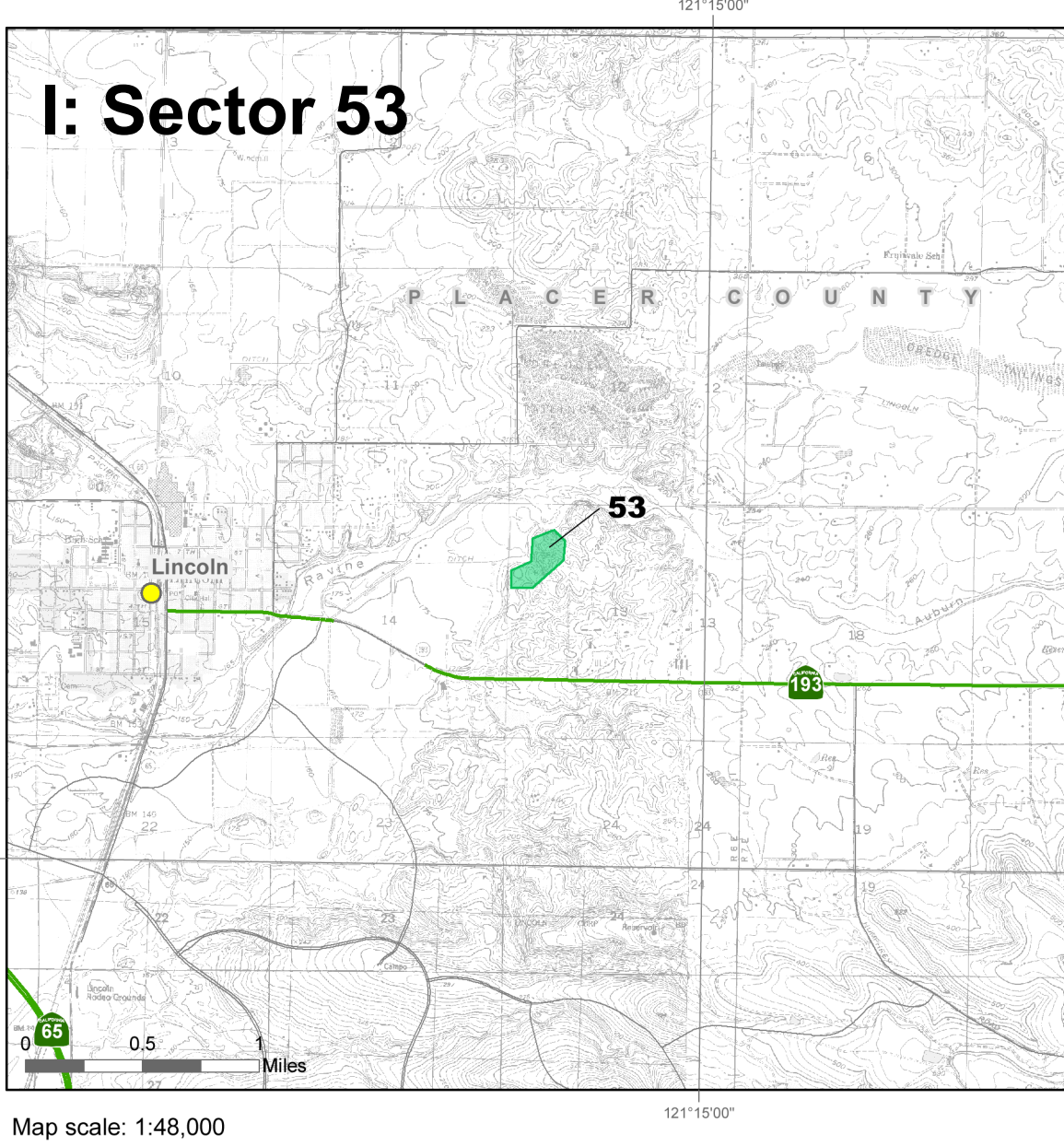
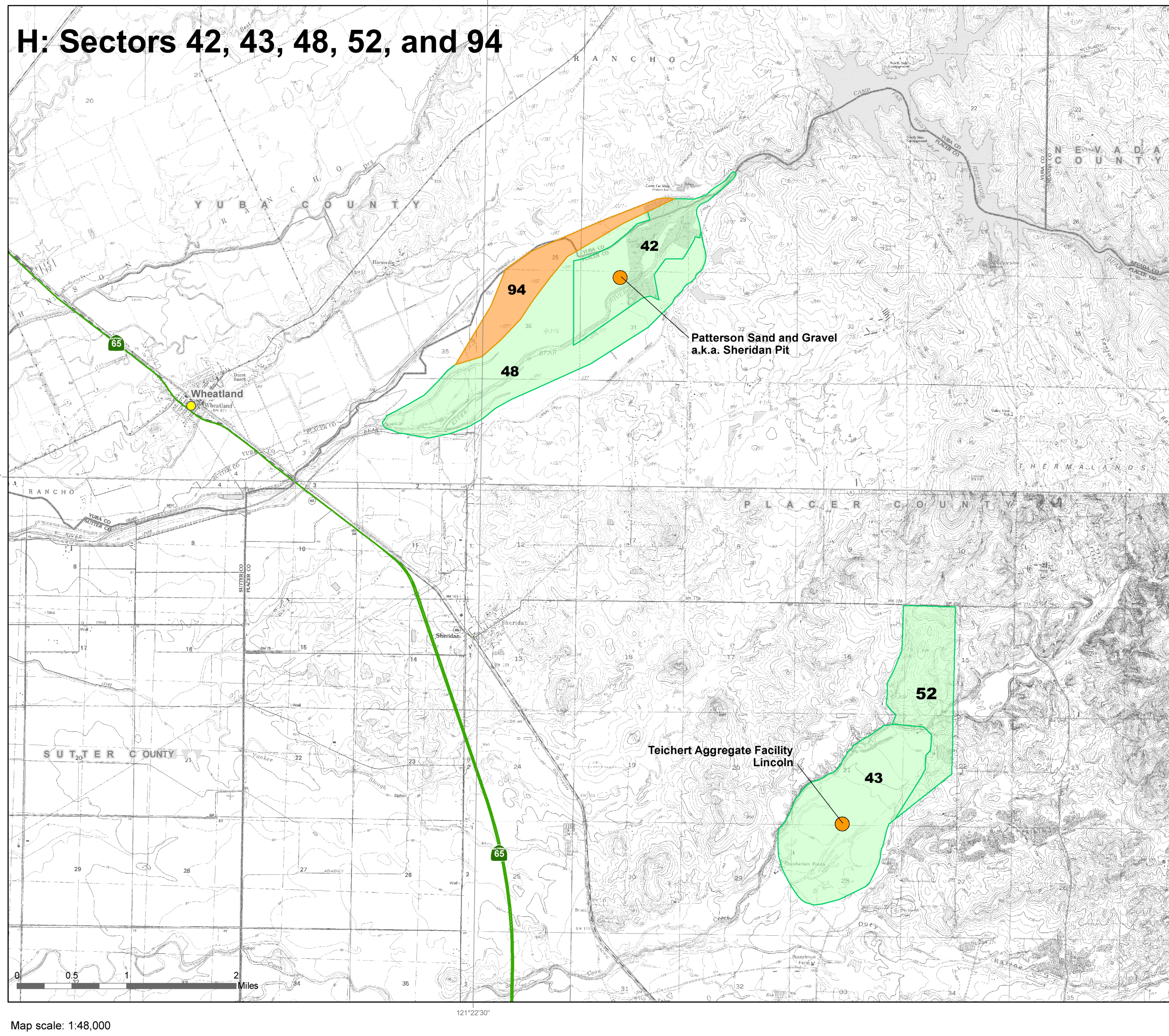
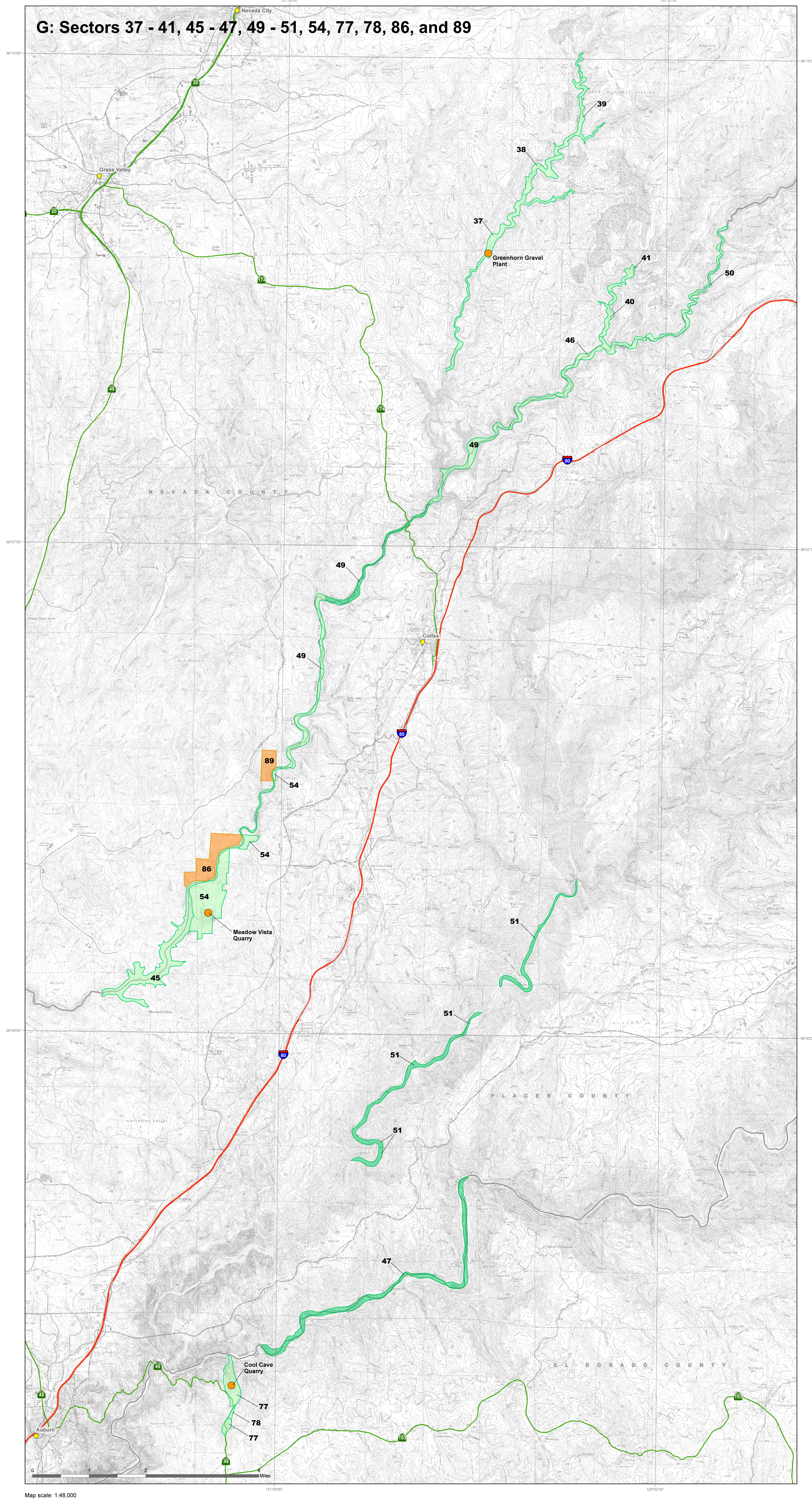
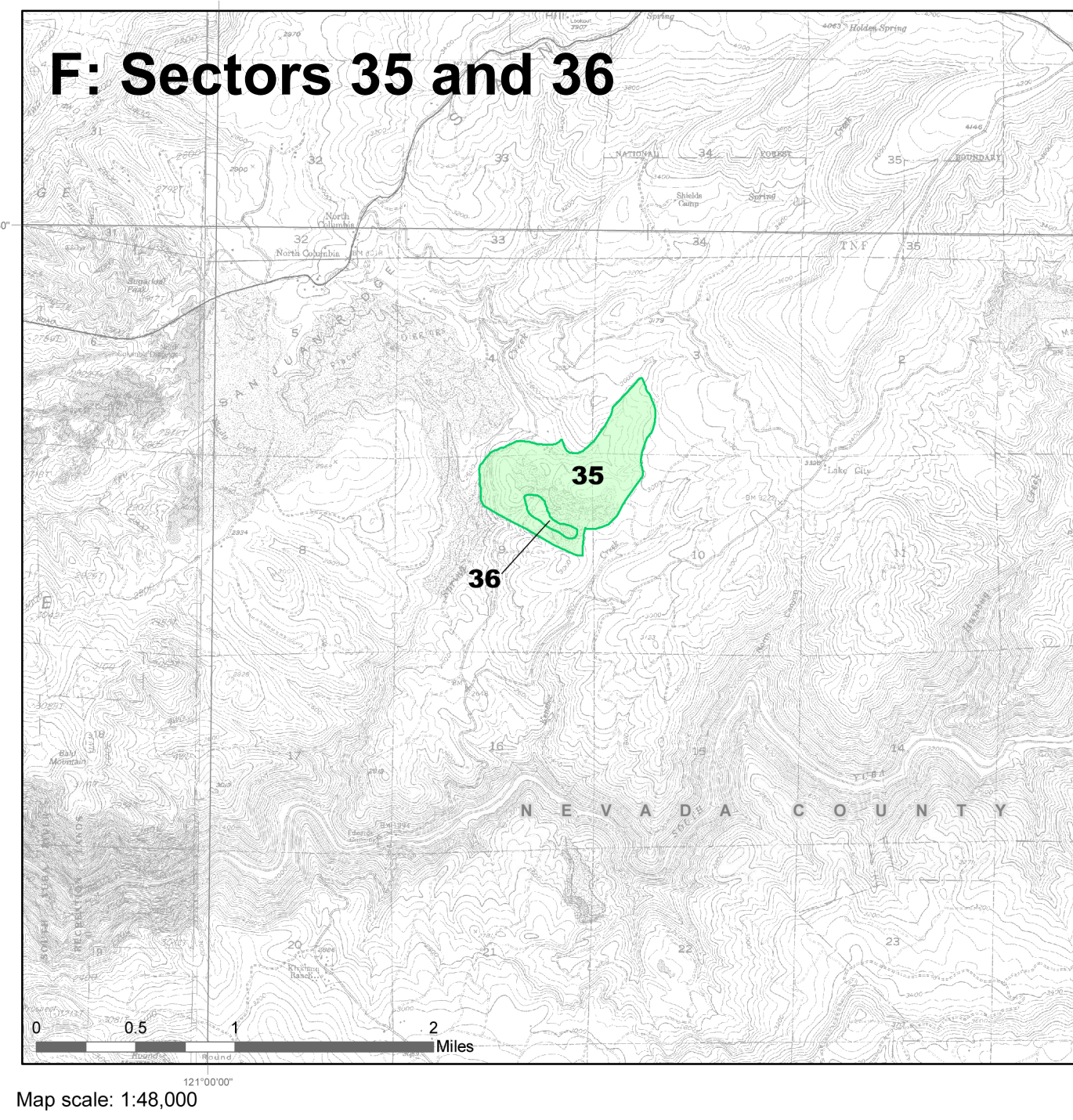
# California Geological Survey

## Resource Sector Map for Concrete Aggregate in the Greater Sacramento Area Production-Consumption Region

By Matt D. O'Neal and Fred W. Gius  
2018

- Sector depleted by mining, lost to incompatible land uses, or determined to no longer be significant upon re-evaluation.
- New sector containing regionally significant concrete aggregate resources
- Sector containing regionally significant concrete aggregate resources
- Mine
- Greater Sacramento Area P-C Region
- County
- City
- Interstate
- State Highway
- U.S. Highway
- Road

Projection: State Albers (feet)  
Datum: NAD 83



California  
**Department of  
Conservation**  
California Geological Survey

Copyright 2018 by the California Department of Conservation, California Geological Survey. All rights reserved. No part of this publication may be reproduced without written consent of the California Geological Survey.  
The California Department of Conservation makes no warranties as to the suitability of this product for any particular purpose.  
[www.conservation.ca.gov/cgs](http://www.conservation.ca.gov/cgs)