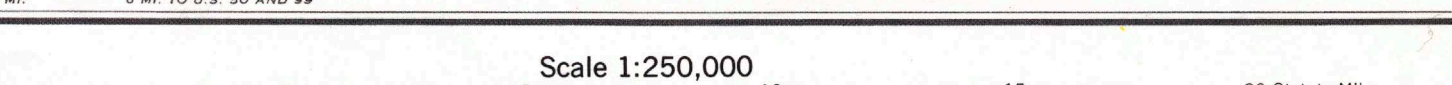
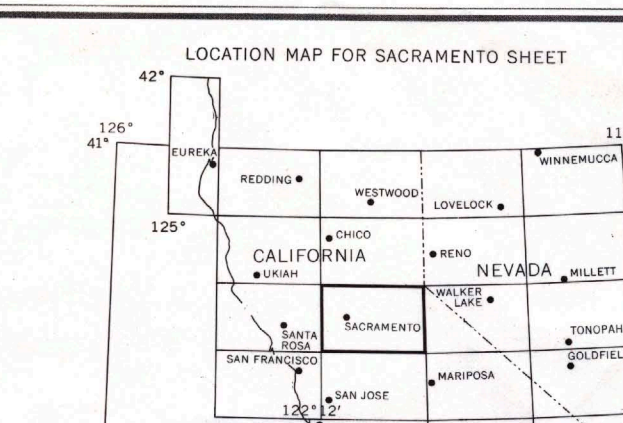


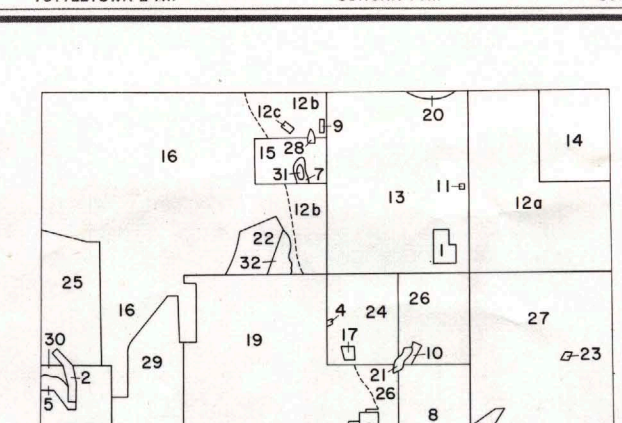
TOPOGRAPHIC BASE MAP  
Prepared by the Army Map Service (KCSX), Corps of Engineers, U.S. Army, Washington, D.C. Compiled in 1961 by photogrammetric methods and from United States Quadrangles, 1:24,000, 1:25,000, 1:50,000, U.S. Geological Survey and AMS 1941-55, USCGS Chart 5534, 1:50,000. Planimetric detail revised by photogrammetric methods. Horizontal and vertical control by USGS, USCGS, USNR, USFS and CE. Map field checked, 1957.  
Land net prepared by U.S. Geological Survey.  
Depth contours in Lake Tahoe in feet, compiled from readings shown on U.S. Coast and Geodetic Survey Chart 5001.  
Minor corrections and additions to culture by California Division of Mines and Geology, 1955.



Scale 1:250,000  
CONTOUR INTERVAL 200 FEET  
WITH SUPPLEMENTARY CONTOURS AT 100 FOOT INTERVALS  
**GEOLOGIC MAP OF CALIFORNIA**  
OLAF P. JENKINS EDITION  
**SACRAMENTO SHEET**  
COMPILATION BY RUDOLPH G. STRAND AND JAMES B. KOENIG 1965

Contact  
*Dashed where approximately located, gradational or inferred*

Fault  
*Dashed where approximately located, dotted where concealed*  
(See note 2 on explanatory chart.)



INDEX TO GEOLOGIC MAPPING  
(COMPLETE INDEX ON EXPLANATORY DATA SHEET)

1. Auer, C. A., unpublished.
2. Bailey, T. L., 1930.
3. Banta, A. K., 1962.
4. Banta, F., 1945.
5. Brooks, B. D., et al., 1962.
6. Burnett, J. L., et al., unpublished.
7. Chan, F. W., et al., 1951.
8. Clark, L. D., et al., 1963.
9. Clark, W. B., 1954.
10. Goldman, H. B., unpublished.
11. Klein, T. E., 1937.
12. Lindgren, W., 1896.
13. Lindgren, W., 1894.
14. Lindgren, W., 1894.
15. Lindgren, W., and Turner, H. W., 1894.
16. Loomis, A. A., unpublished.
17. Omsted, F. H., unpublished.
18. Omsted, F. H., and Turner, M. D., 1952.
19. Piper, A. M., unpublished.
20. Piper, A. M., et al., 1939.
21. Redmond, J. L., unpublished.
22. Ross, R. L., 1959.
23. Scheubli, D. R., unpublished.
24. Tolstarev, N. L., unpublished.
25. Thomsen, H. G., et al., 1960.
26. Turner, H. W., 1898.
27. Turner, H. W., and Ransome, F. L., 1898.
28. U.S. Bur. Reclamation, 1957.
29. U.S. Dept. Agriculture, 1935, 1941, 1954.
30. Weaver, C. E., 1949.
31. Wells, F. G., et al., 1940.
32. Woods, H. D., unpublished.

HEAVY BORDER ON BOXES INDICATES UNITS THAT APPEAR ON THIS SHEET