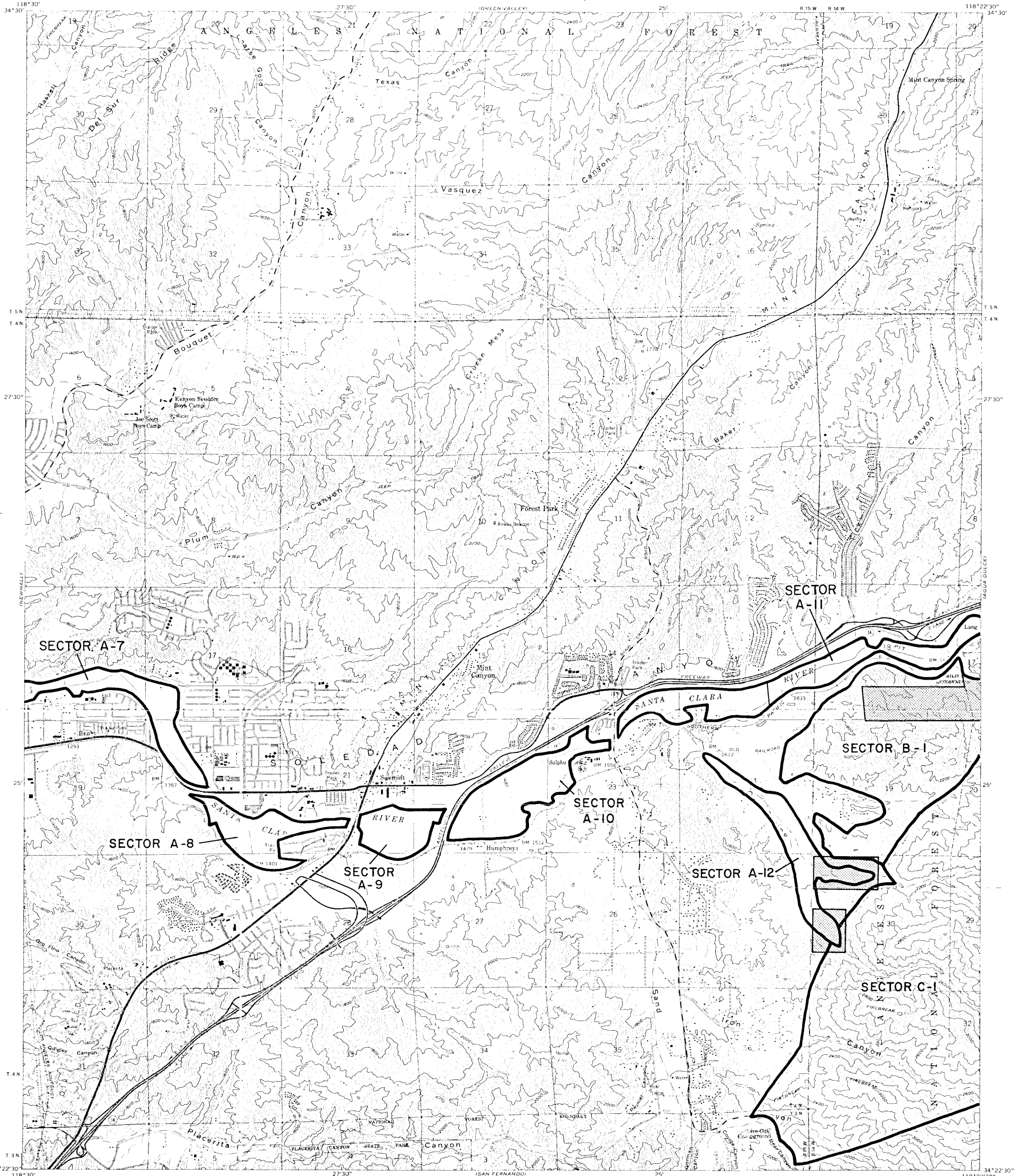


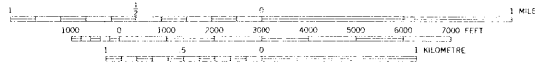
STATE MINING AND GEOLOGY BOARD
JAMES A. ANDERSON, CHAIRMAN

STATE OF CALIFORNIA—GEORGE DEUKMEJIAN, GOVERNOR
THE RESOURCES AGENCY—GORDON K. VAN VLECK, SECRETARY FOR RESOURCES
DEPARTMENT OF CONSERVATION—RANDALL M. WARD, DIRECTOR

MINT CANYON QUADRANGLE
SMARA DESIGNATION MAP NO. 85-3
SAUGUS-NEWHALL & PALMDALE PLATE 3



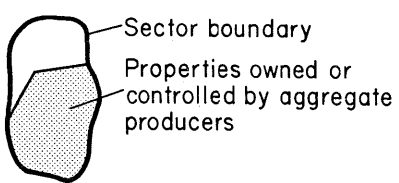
TOPOGRAPHIC BASE MAP BY U.S. GEOLOGICAL SURVEY
REDUCED FROM 1:24,000



CONTOUR INTERVAL 40 FEET
DOTTED LINES REPRESENT 20-FOOT CONTOURS
NATIONAL GEODESIC VERTICAL DATUM OF 1929

MINT CANYON, CALIF.

EXPLANATION



Regionally Significant Construction
Aggregate Resource Areas In The
SAUGUS-NEWHALL & PALMDALE
Production-Consumption Region

STATE MINING AND GEOLOGY BOARD
JANUARY 1987

PREPARED IN COMPLIANCE WITH THE SURFACE MINING
AND RECLAMATION ACT OF 1975, ARTICLE 4, SECTION 2790