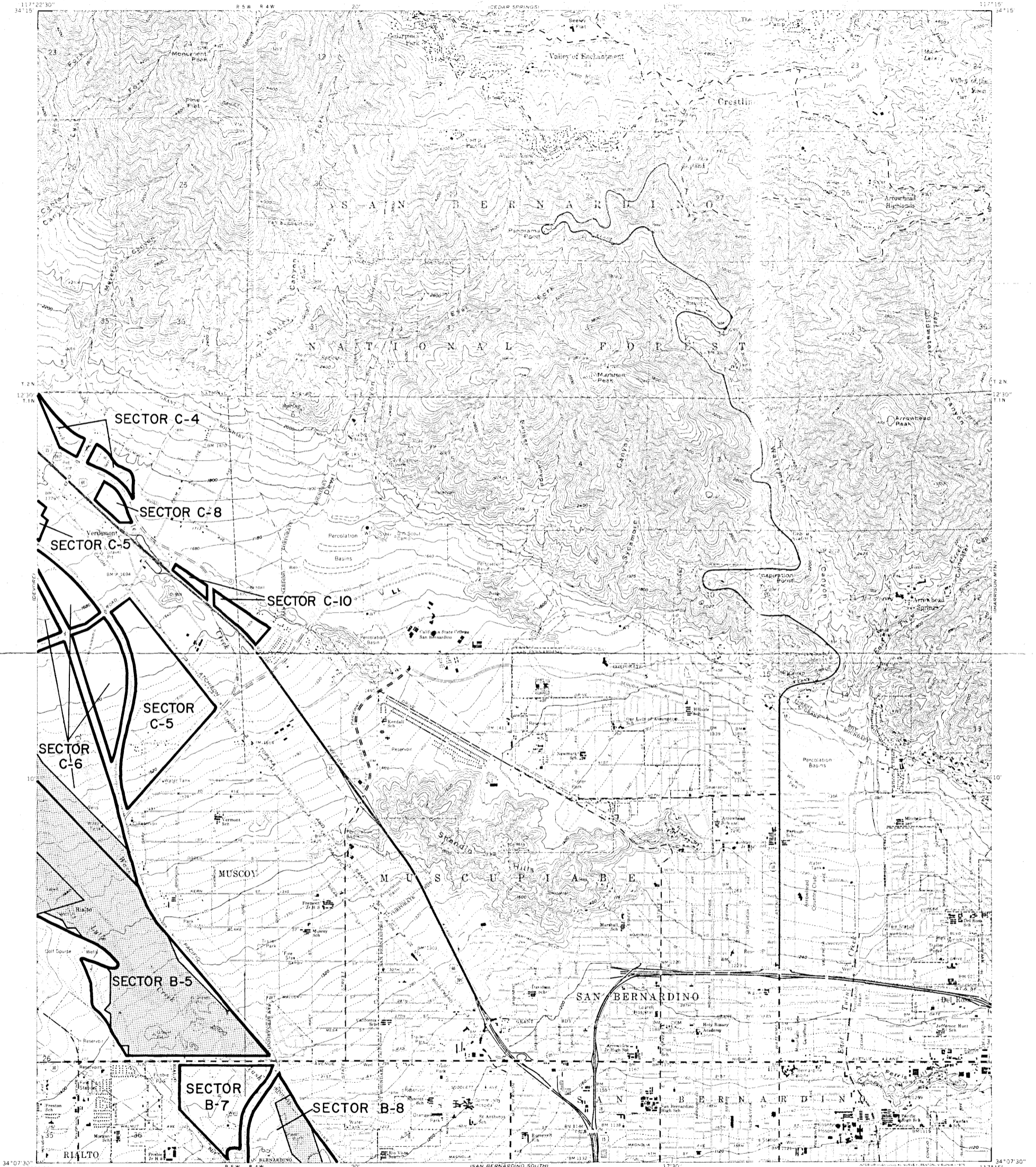


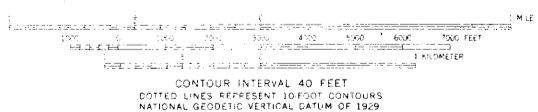
STATE MINING AND GEOLOGY BOARD
JAMES A. ANDERSON, CHAIRMAN

STATE OF CALIFORNIA—GEORGE DEUKMEJIAN, GOVERNOR
THE RESOURCES AGENCY—GORDON K. VAN VLECK, SECRETARY FOR RESOURCES
DEPARTMENT OF CONSERVATION—RANDALL M. WARD, DIRECTOR

SAN BERNARDINO NORTH QUADRANGLE
SMARA DESIGNATION MAP NO. 85-2
SAN BERNARDINO PLATE 3





TOPOGRAPHIC BASE MAP BY U.S. GEOLOGICAL SURVEY
REDUCED FROM 1:24,000



SAN BERNARDINO NORTH, CALIF.

EXPLANATION

-  Sector boundary
-  Properties owned or controlled by aggregate producers



Regionally Significant Construction
Aggregate Resource Areas In The
SAN BERNARDINO
Production-Consumption Region

STATE MINING AND GEOLOGY BOARD
JANUARY 1987

PREPARED IN COMPLIANCE WITH THE SURFACE MINING
AND RECLAMATION ACT OF 1975, ARTICLE 4, SECTION 2790