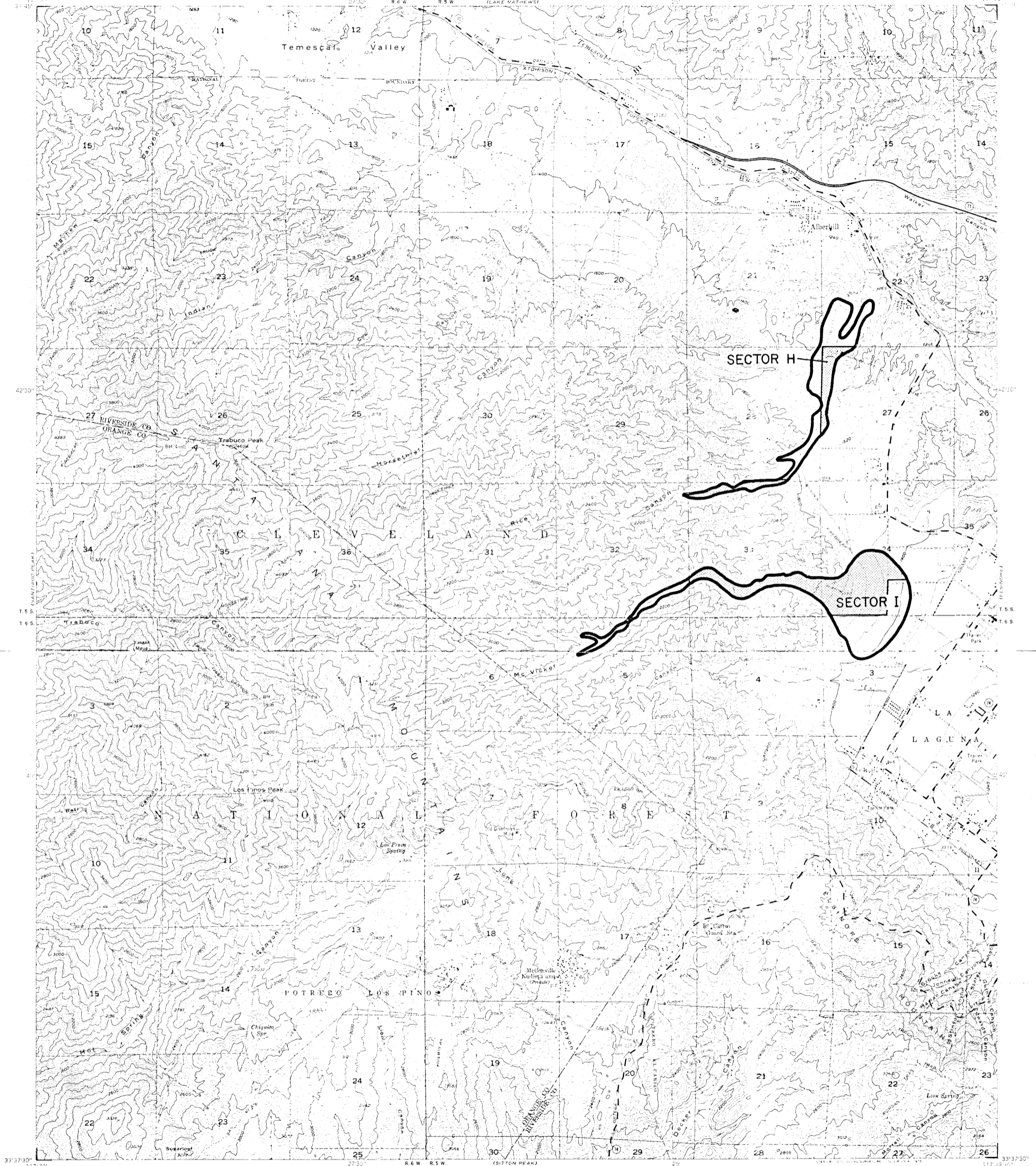


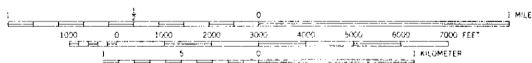
STATE OF CALIFORNIA—GEORGE DEUKMEJIAN, GOVERNOR
 THE RESOURCES AGENCY—GORDON K. VAN VLECK, SECRETARY FOR RESOURCES
 DEPARTMENT OF CONSERVATION—RANDALL M. WARD, DIRECTOR

ALBERHILL QUADRANGLE—
 SMARA DESIGNATION MAP NO. 85-2
 SAN BERNARDINO PLATE 12

STATE MINING AND GEOLOGY BOARD
 JAMES A. ANDERSON, CHAIRMAN





TOPOGRAPHIC BASE MAP BY U.S. GEOLOGICAL SURVEY
 REDUCED FROM 1:24,000



CONTOUR INTERVAL 40 FEET
 NATIONAL GEODESIC VERTICAL DATUM OF 1929

ALBERHILL, CALIF.

EXPLANATION

-  Sector boundary
-  Properties owned or controlled by aggregate producers



**Regionally Significant Construction
 Aggregate Resource Areas In The
 SAN BERNARDINO
 Production-Consumption Region**

STATE MINING AND GEOLOGY BOARD
 JANUARY 1987

PREPARED IN COMPLIANCE WITH THE SURFACE MINING
 AND RECLAMATION ACT OF 1975, ARTICLE 4, SECTION 2790