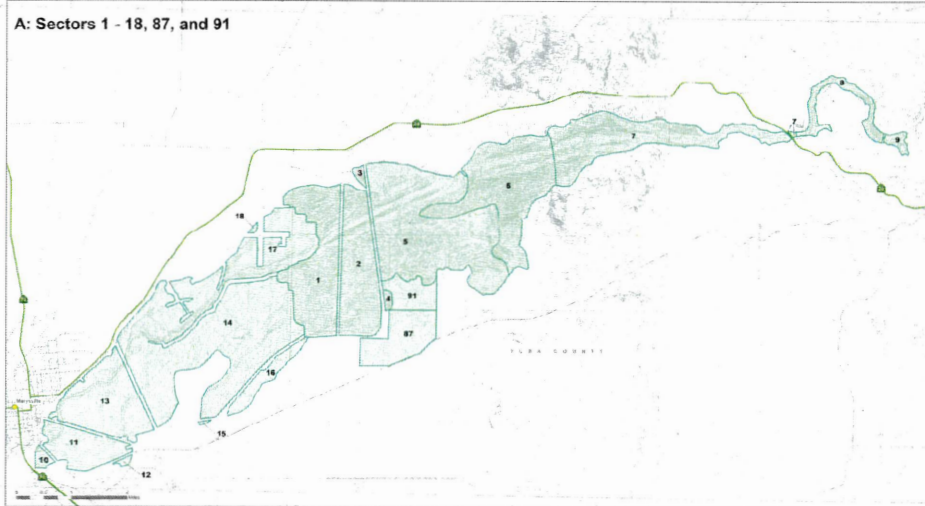


# California State Mining and Geology Board

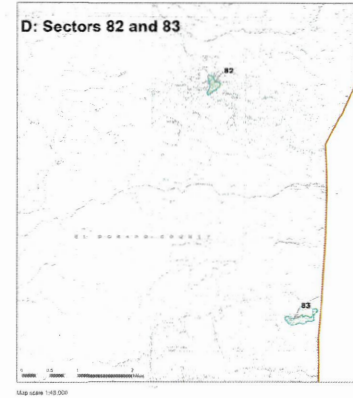
## Designation for Concrete Aggregate in the Greater Sacramento Area Production-Consumption Region

2025

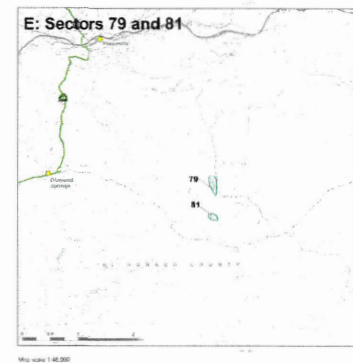
**A: Sectors 1 - 18, 87, and 91**



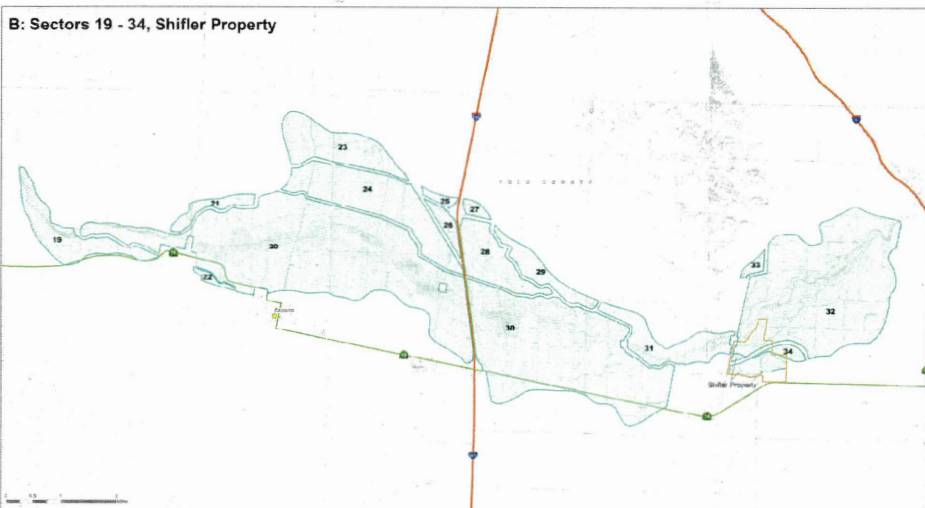
**D: Sectors 82 and 83**



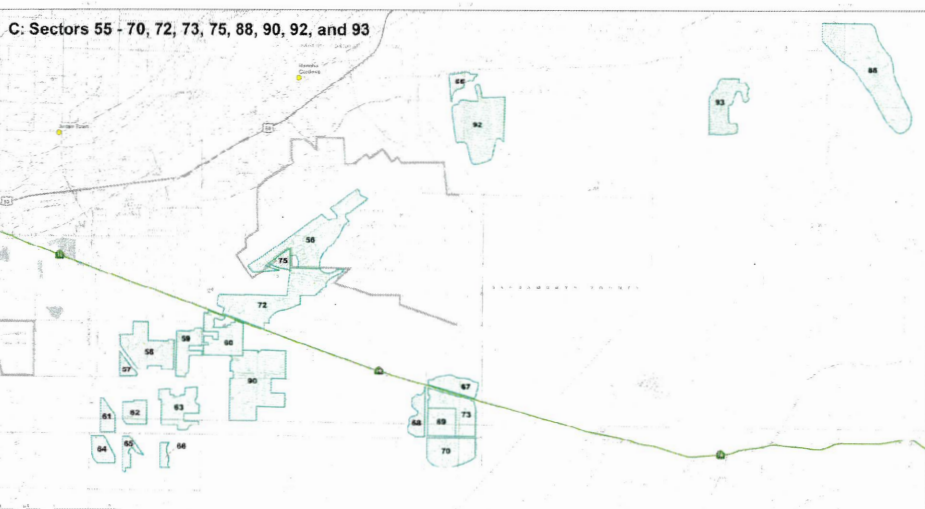
**E: Sectors 79 and 81**



**B: Sectors 19 - 34, Shifler Property**

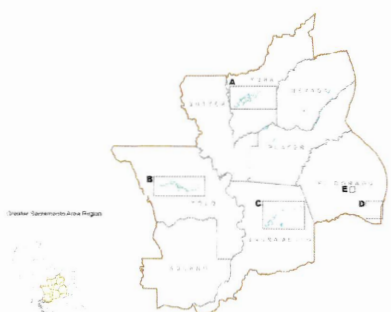


**C: Sectors 55 - 70, 72, 73, 75, 88, 90, 92, and 93**



- Shifler Property Boundary
- Designated Section/MRZ-2 containing regionally significant concrete aggregate resources
- Greater Sacramento Area P-C Region
- County
- City
- Interstate
- State Highway
- U.S. Highway
- Road

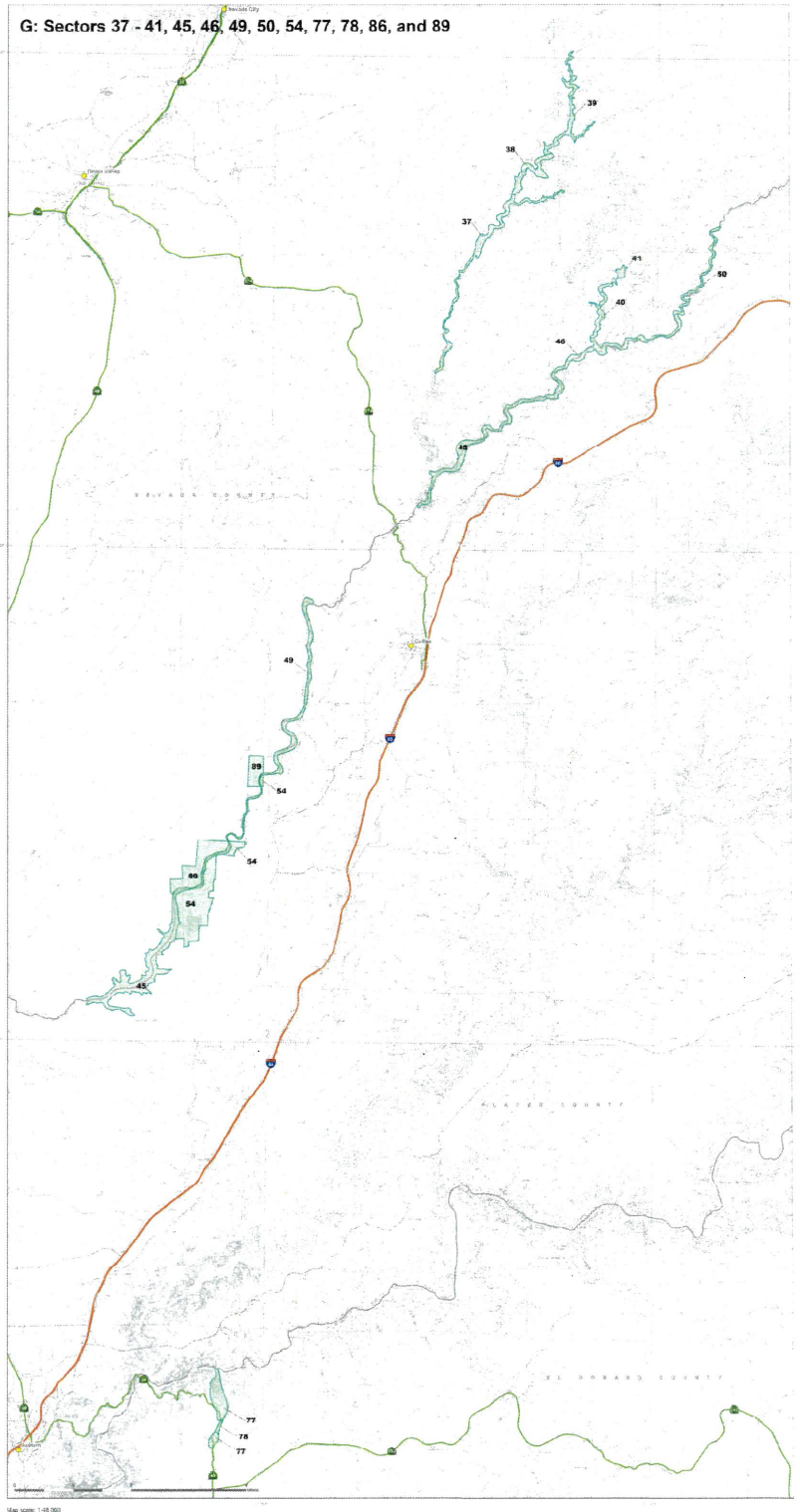
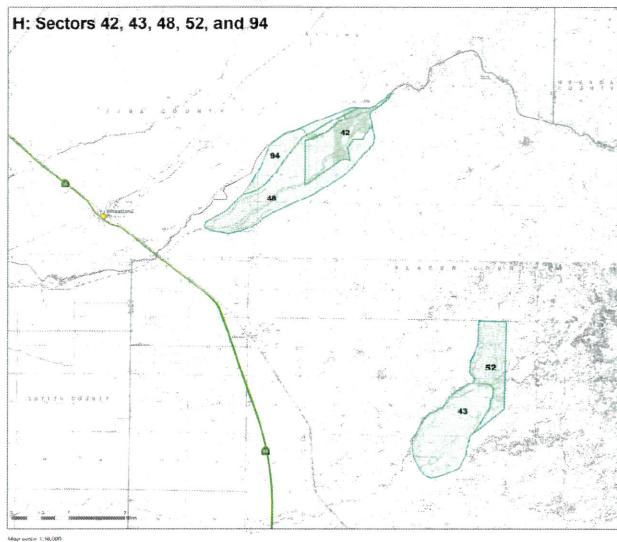
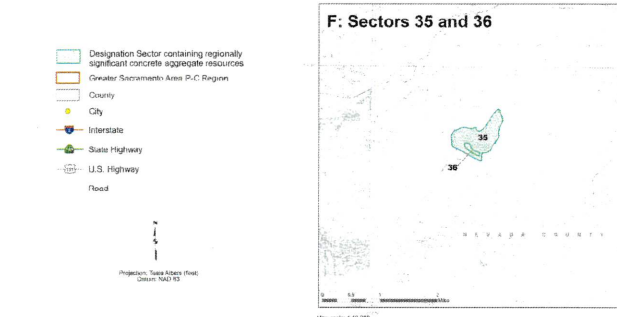
Projection: NAD 83 (GCS)  
Datum: NAD 83



# California State Mining and Geology Board

## Designation for Concrete Aggregate in the Greater Sacramento Area Production-Consumption Region

2025



California  
**Department of  
Conservation**  
State Mining and Geology Board

Copyright 2025 by the California State Mining and Geology Board  
All rights reserved. No part of this publication may be reproduced  
without written consent of the California State Mining and Geology Board.  
Printed in accordance with the State Mining and Geology Board  
Act of 1975, Section 2700.  
See also California Code of Regulations, Title 14, Division 2,  
Chapter 5, Subchapter 1, Article 2, Section 2505.18.  
The California Department of Conservation makes no warranties  
as to the suitability of this product for any particular purpose.  
[www.conservation.ca.gov/smgp](http://www.conservation.ca.gov/smgp)

Information on this Plate was modified from: Batten, Steve. Vector artwork by Jeffery Schmidt. "Designation of the Greater Sacramento Area Production-Consumption Region" January 18, 2022.  
Base Map: Source: Revised California Department of Transportation (Caltrans) Digital Vector Graphics (DVG) U.S. Geological Survey 7.5 Minute Contourlines U.S. Geological Survey