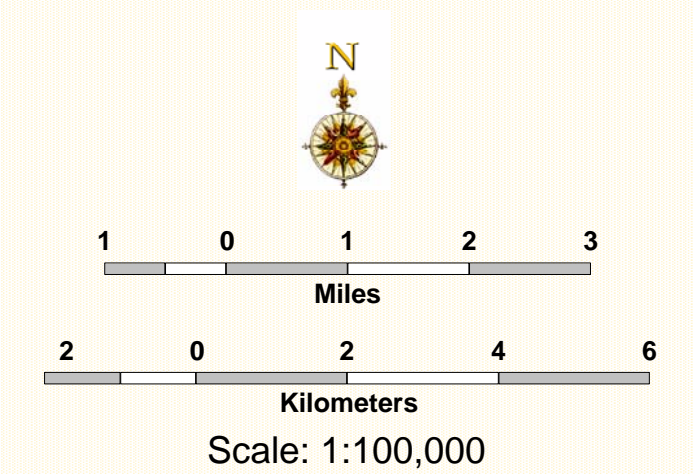
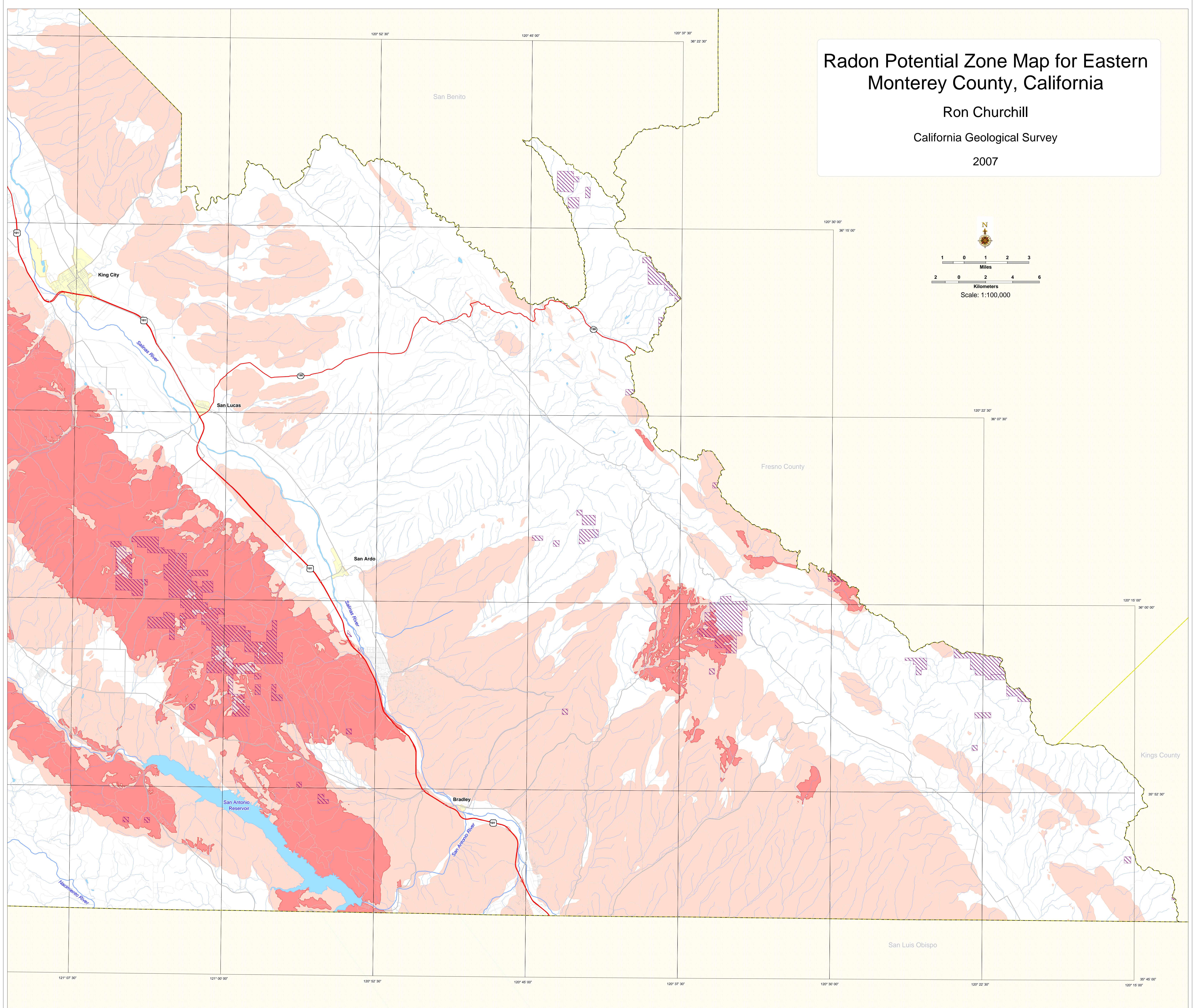


Radon Potential Zone Map for Eastern Monterey County, California

Ron Churchill
 California Geological Survey
 2007



- EXPLANATION**
- Radon Potential Zoning Definitions:**
- High Potential for Indoor Radon Levels Above 4.0 Picocuries per Liter
 - Moderate Potential for Indoor Radon Levels Above 4.0 Picocuries per Liter
 - Low Potential for Indoor Radon Levels Above 4.0 Picocuries per Liter
- See companion report to this map for further information about these zones.
- Map Features**
- Bureau of Land Management (BLM)
 - Urban Areas

The U.S. Environmental Protection Agency (EPA) recommends that all homes be tested for radon whatever their geographic location. Homes with elevated radon levels have been found in all three zones (High, Moderate, and Low) within Eastern Monterey County. The U.S. EPA recommends that action be taken to reduce radon in homes with an average annual level higher than four picocuries per liter (4.0 pCi/l).



MAP USAGE AND LIMITATIONS

This map identifies areas within Eastern Monterey County where geologic conditions are more likely to contribute to excessive indoor radon levels. It is intended to assist national, state and local governments and organizations in targeting their radon program activities and resources. This map is not intended for determining which buildings have excessive indoor radon levels. In addition to geology, indoor radon levels can be influenced by local variability in factors such as soil permeability and climatic conditions, and by factors such as building design, construction, condition, and usage. Consequently, building-specific radon levels can only be determined by indoor radon testing. No warranty as to actual radon levels at specific sites in Eastern Monterey County is expressed or implied by this map or the accompanying report.

Questions regarding this map should be directed to:

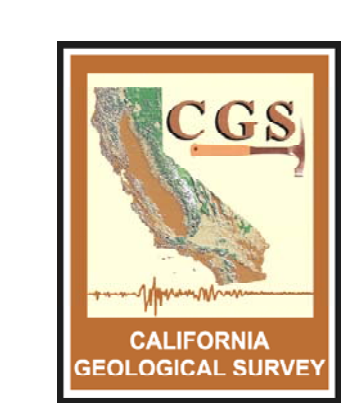
California Department of Public Health, Radon Program,
 George Faggella, phone (916) 449-5674
 California Geological Survey, Ron Churchill, phone (916) 327-0745

Additional information about radon can be found at the following websites:

California Department of Public Health, Radon Program:
<http://www.cdph.ca.gov/healthinfo/environmental/Pages/Radon.aspx>
 California Geological Survey-Mineral Resources Program:
http://www.conservation.ca.gov/cgs/minerals/hazardous_minerals/radon/Pages/Index.aspx
 U.S. EPA: <http://www.epa.gov/iaq/radon/>

Map Design and Layout by Milton Fonseca

Prepared by the California Department of Conservation, California Geological Survey for the California Department of Public Health, Radon Program, October 2007, According to Interagency Agreement DOC #1002-35R.



Copyright © 2007 by the California Department of Conservation. All rights reserved. No part of this publication may be reproduced without written consent of the California Department of Conservation. The California Department of Conservation makes no warranties as to the suitability of this product for any particular purpose.