

UNITED STATES  
DEPARTMENT OF THE INTERIOR  
GEOLOGICAL SURVEY

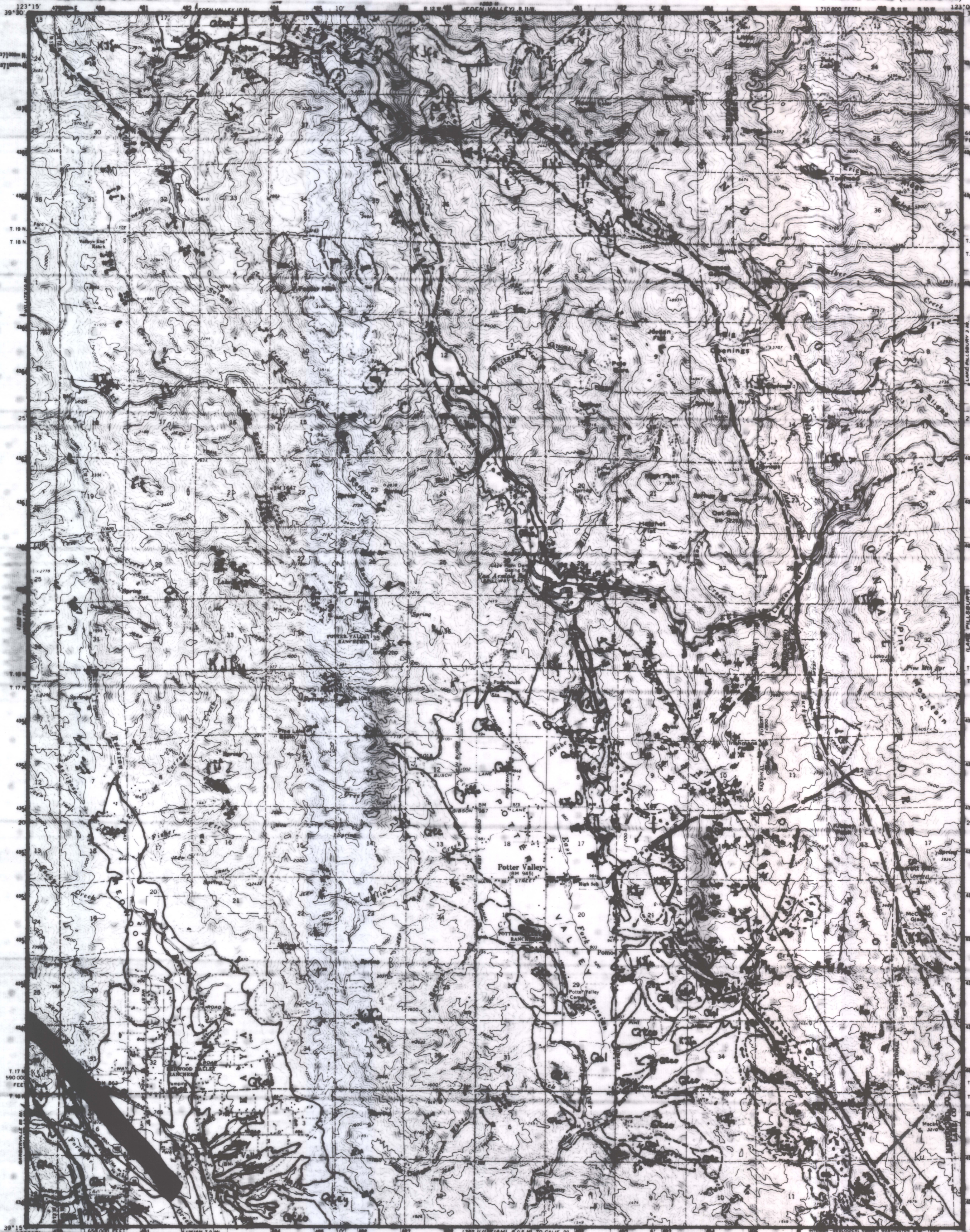
STATE OF CALIFORNIA  
DEPARTMENT OF WATER RESOURCES

REGION I GEOLOGY GROUP

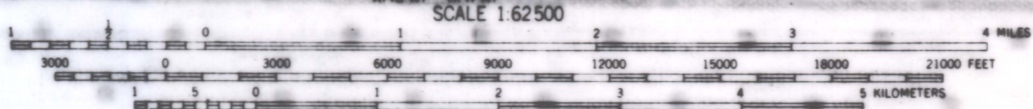
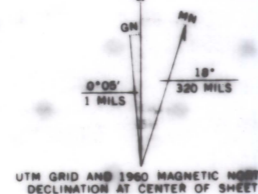
GEOLOGIC MAP  
POTTER VALLEY  
QUADRANGLE

Compiled by E.A. ... Date: 4-58  
Approved: J.L.A.

POTTER VALLEY QUADRANGLE  
CALIFORNIA  
15 MINUTE SERIES (TOPOGRAPHIC)



Mapped, edited, and published by the Geological Survey  
Control by USGS, USC&GS, and USCE  
South half compiled in 1962 from 1:24,000-scale maps dated 1960  
North half topography by photogrammetric methods from aerial  
photography in 1957. Field checked 1960  
Datum: 1927 North American datum  
Based on California coordinate system, zone 2  
Universal Transverse Mercator grid ticks,  
blue



CONTOUR INTERVAL 80 FEET  
DOTTED LINES REPRESENT 40-FOOT CONTOURS  
DATUM IS MEAN SEA LEVEL



ROAD CLASSIFICATION  
Heavy-duty ——— Light-duty ———  
Medium-duty ——— Unimproved dirt - - - - -  
○ U.S. Route ○ State Route

The south half of this area also covered by  
7.5-minute, 1:24,000-scale maps  
Redwood Valley 1960 and Potter Valley 1960

POTTER VALLEY, CALIF.  
N3915-W12300/15

1960  
AMS 1362 I-SERIES V795

THIS MAP COMPLIES WITH NATIONAL ACCURACY STANDARDS  
FOR SALE BY U.S. GEOLOGICAL SURVEY, DEPARTMENT OF THE INTERIOR, WASHINGTON, D.C. 20242  
A FOLDER DESCRIBING TOPOGRAPHIC MAPS IS AVAILABLE ON REQUEST