

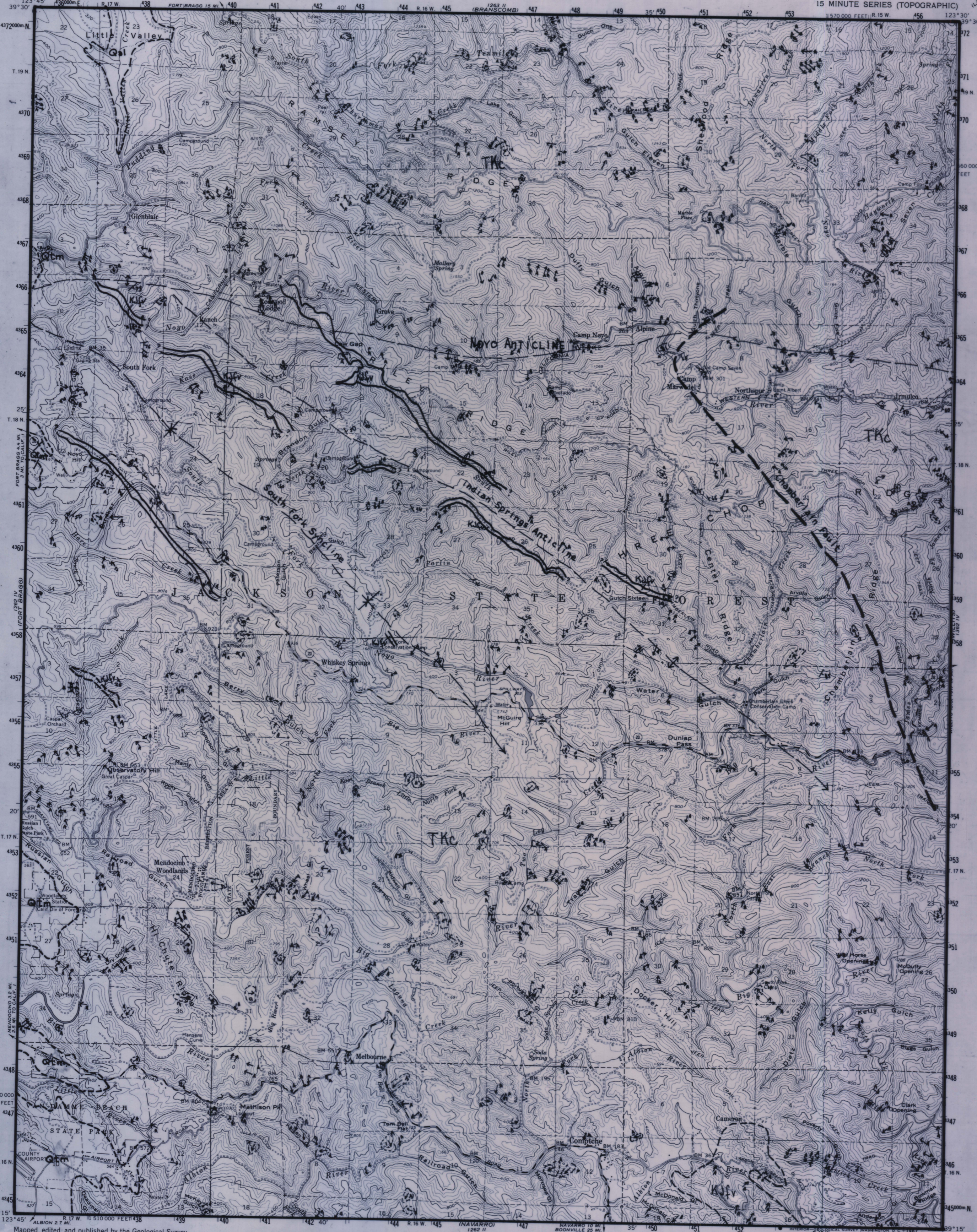


Comptche

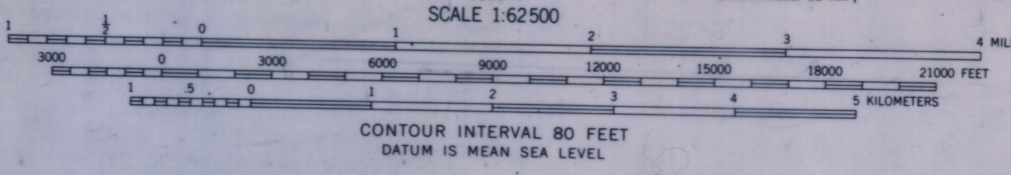
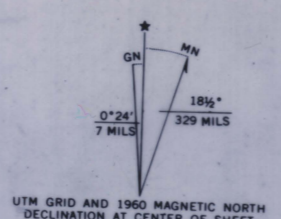
UNITED STATES
 DEPARTMENT OF THE INTERIOR
 GEOLOGICAL SURVEY

STATE OF CALIFORNIA
 DEPARTMENT OF WATER RESOURCES

COMPTCHE QUADRANGLE
 CALIFORNIA-MENDOCINO CO.
 15 MINUTE SERIES (TOPOGRAPHIC)



Maped, edited, and published by the Geological Survey
 Control by USGS, USC&GS, and USCE
 Topography by photogrammetric methods from aerial
 photographs taken 1957. Field checked 1960
 Polyconic projection. 1927 North American datum
 10,000-foot grid based on California coordinate system, zone 2
 1000-meter Universal Transverse Mercator grid ticks,
 zone 10, shown in blue
 Where omitted, land lines have not been established



ROAD CLASSIFICATION
 Medium-duty ——— Light-duty ———
 Unimproved dirt - - - - -
 State Route ○

FOR SALE BY U. S. GEOLOGICAL SURVEY, DENVER, COLORADO 80225 OR WASHINGTON, D. C. 20242
 A FOLDER DESCRIBING TOPOGRAPHIC MAPS AND SYMBOLS IS AVAILABLE ON REQUEST

COMPTCHE, CALIF.
 N3915-W12330/15

1960

AMS 1262 I-SERIES V795

SPECIAL PRINTING
 Contours and woodland symbols omitted