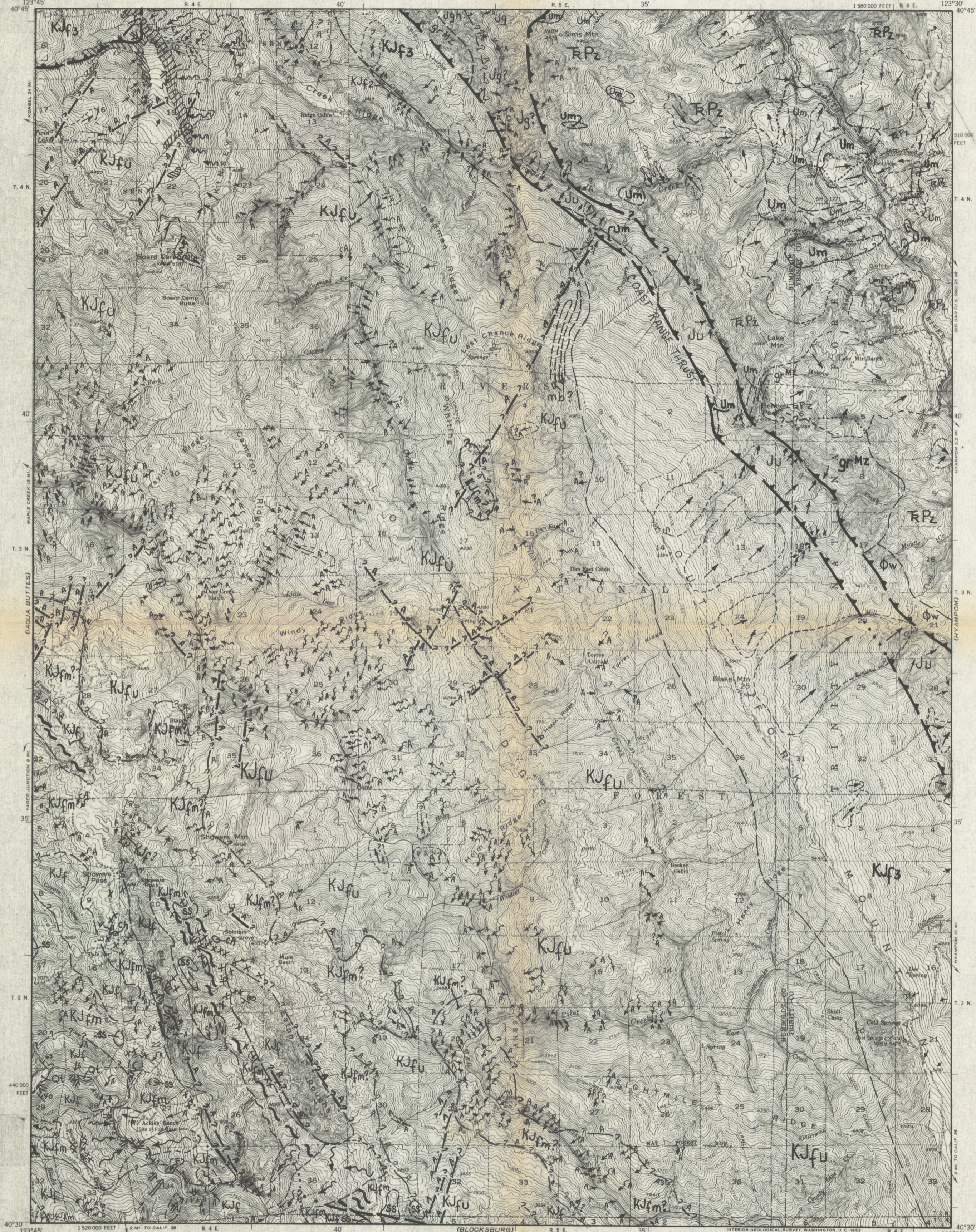
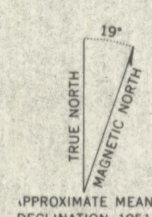




(IRONSIDE MTN)



Mapped, edited, and published by the Geological Survey  
Control by USGS, USC&GS, USCE, and USFS  
Topography from aerial photographs by photogrammetric methods  
Aerial photographs taken 1947. Field check 1951  
Polyconic projection. 1927 North American datum  
10,000-foot grid based on California coordinate system, zone 1  
Certain land lines are omitted because of insufficient data  
All recovered corners are shown  
Dashed land lines indicate approximate locations  
Unchecked elevations are shown in brown



Scale 1 in. = 62,500 in.

CONTOUR INTERVAL 50 FEET  
DATUM IS MEAN SEA LEVEL

ROAD CLASSIFICATION  
Heavy-duty 3 LANE IS LANE Light-duty 2 LANE IS LANE  
Medium-duty 2 LANE IS LANE Unimproved dirt ---  
U.S. Route □ State Route ○

PILOT CREEK, CALIF.  
N4030-W12330/15  
1951