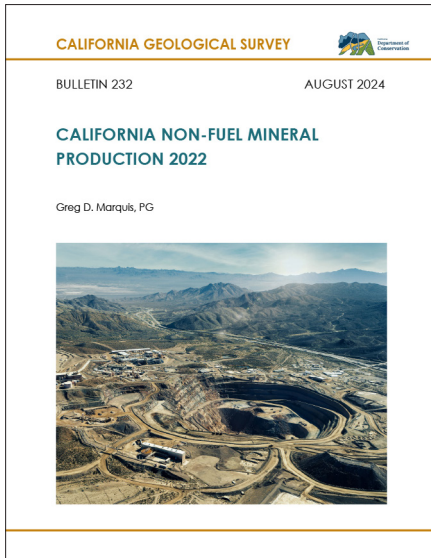


CGS Publications

RELEASED IN 2024

BULLETINS (B)

Bulletin 232: California Non-Fuel Mineral Production 2022



DATA RELEASES (DR)

DR 2024-1: Data Release for the Del Norte Nickel-Cobalt Laterite Geochemical Reconnaissance Project

GEOLOGIC DATA MAPS (GDM)

GDM 8: California Strong Motion Instrumentation Program Network Stations



FAULT EVALUATION REPORTS (FER), SEISMIC HAZARD ZONE REPORTS (SHZR)

AND RELATED EARTHQUAKE ZONES OF REQUIRED INVESTIGATION MAPS (EZRIM)*

FER 268: The San Andreas Fault Zone in the San Mateo, Woodside, Palo Alto, and Mindego Hill 7.5' Quadrangles, San Mateo and Santa Clara Counties

FER 270: The Southern Rodgers Creek Fault Zone in the Sears Point, Petaluma River, Glen Ellen, Cotati, and Santa Rosa 7.5' Quadrangles, Sonoma County

FER 273: The San Andreas Fault Zone in the Burnt Peak, Lake Hughes, and Del Sur 7.5' Quadrangles, Los Angeles County

FER 274: The Paxton Ranch and Salt Wells Valley Fault Zones, with Modifications to the Airport Lake and Little Lake Fault Zones in the White Hills, Burro Canyon, Ridgecrest North, Lone Butte, Westend, Spangler Hills West, Spangler Hills East, and Christmas Canyon 7.5' Quadrangles, Inyo, Kern, and San Bernardino Counties

SHZR 134: Seismic Hazard Zones in the Richmond, Mare Island, and San Quentin 7.5' Quadrangles, Contra Costa County

SHZR 135: Seismic Hazard Zones in the Vine Hill 7.5' Quadrangle, Contra Costa County

SHZR 136: Seismic Hazard Zones in the Walnut Creek 7.5' Quadrangle, Contra Costa County

SHZR 137: Seismic Hazard Zones in the Diablo 7.5' Quadrangle, Contra Costa County

SHZR 138: Seismic Hazard Zones in the Benicia and Briones Valley 7.5' Quadrangles, Contra Costa County

SHZR 139: Seismic Hazard Zones in the Oakland East and Las Trampas Ridge 7.5' Quadrangles, Contra Costa County

SHZR 140: Seismic Hazard Zones in the Hayward, Dublin, and Livermore 7.5' Quadrangles, Contra Costa County

PRELIMINARY GEOLOGIC MAPS (PGM)

PGM 21-02, v2.0: Preliminary geologic map of the Black Mountain 7.5' Quadrangle, Los Angeles and Ventura Counties

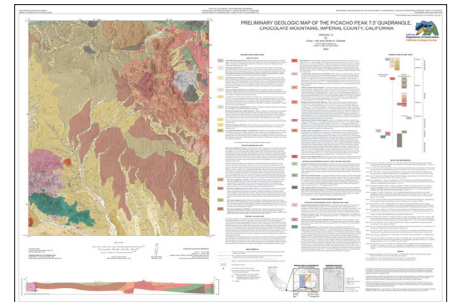
PGM 23-01: Preliminary geologic map of the Columbia 7.5' Quadrangle, Calaveras and Tuolumne Counties

PGM 23-02: Preliminary geologic map of the Liebre Mountain 7.5' Quadrangle, Los Angeles County

PGM 24-04: Preliminary geologic map of the Hedges 7.5' Quadrangle, Chocolate Mountains, Imperial County

PGM 24-05: Preliminary geologic map of the Ogilby 7.5' Quadrangle, Cargo Muchacho Mountains, Imperial County

PGM 24-06: Preliminary geologic map of the Picacho Peak 7.5' Quadrangle, Chocolate Mountains, Imperial County



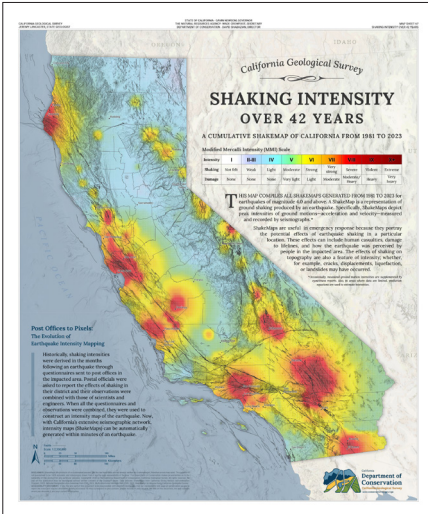
*EZRIM LISTED BY COUNTY – Contra Costa: Benicia, Briones Valley, Diablo, Dublin, Hayward, Las Trampas Ridge, Livermore, Mare Island, Oakland East, Richmond, San Quentin, Vine Hill, Walnut Creek; Inyo: Burro Canyon, White Hills; Kern: Lone Butte, Ridgecrest North, White Hills; Los Angeles: Burnt Peak, Del Sur, Lake Hughes;

PUBLICATION ANNOUNCEMENTS VIA EMAIL

Be the first to know when we release new publications. Sign up at <https://www.conservation.ca.gov/cgs/publications/releases>

MAP SHEETS (MS)

MS 67: *Cumulative ShakeMap of California from 1981 to 2023*
[Shaking Intensity Over 42 Years]



SMIP SEMINAR PROCEEDINGS

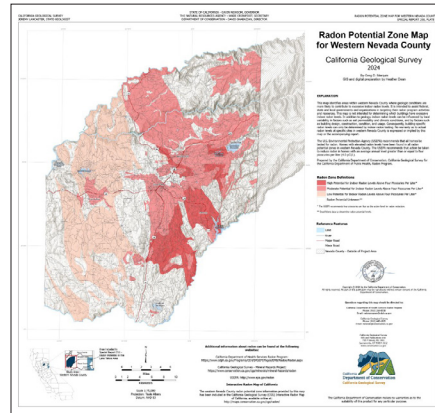
SMIP23: *Proceedings of the SMIP 2023 Seminar on Utilization of Strong-Motion Data*

SPECIAL REPORTS

SR 256: *Radon Potential in Western El Dorado County*

SR 257: *Surface Rupture Mapping of the 2019 M6.4 and M7.1 Ridgecrest Earthquake Sequence on Lidar and Orthoimagery*

SR 258: *Radon Potential in Western Nevada County*



WATERSHED EMERGENCY RESPONSE TEAM (WERT) EVALUATIONS

Airport Fire, Orange and Riverside Counties

Borel Fire, Kern County

Bridge Fire, Los Angeles and San Bernardino Counties

Franklin Fire, Los Angeles County

French Fire, Mariposa County

Lake Fire, Santa Barbara County

Line Fire, San Bernardino County

Mountain Fire, Ventura County

Park Fire, Butte and Tehama Counties

WEB APPLICATIONS

Mineral Resources Data Portal

Dr. Perry Ehlig's Geologic Research Collection (StoryMap)

Ridgecrest Earthquake Sequence - 2019 (StoryMap)

PUBLICATIONS IN THE PIPELINE FOR 2025

Note: Titles are subject to change until the day of publication.

GDM 9: *Sierra Nevada Earth Science Atlas*

MS 48: *Earthquake Shaking Potential for California (update)*

MS XX: *Geologic map of a portion of the western Cady Mountains, San Bernardino County*

PGM 24-01: *Preliminary geologic map of the Willits 7.5' Quadrangle, Mendocino County*

PGM 24-02: *Preliminary geologic map of the North Bloomfield 7.5' Quadrangle, Nevada County*

PGM 24-03: *Preliminary geologic map of the Warm Springs Mountain 7.5' Quadrangle, Los Angeles County*

PGM 25-01: *Preliminary geologic map of the Rosamond 7.5' Quadrangle, Los Angeles and Kern Counties*

PGM 25-02: *Preliminary geologic map of the Colfax 7.5' Quadrangle, Placer County*

PGM 25-03: *Preliminary geologic map of the Burbeck 7.5' Quadrangle, Mendocino County*

FER 263: *The Sierra Madre Fault Zone in the Pasadena and Mt. Wilson 7.5' Quadrangles, Los Angeles County*

FER 275: *The San Gregorio Fault Zone in the Point Ano Nuevo, Franklin Point, Pigeon Point, La Honda, San Gregorio, Half Moon Bay, Montara Mountain, Montara Mountain OE W 7.5' Quadrangles, San Mateo and Santa Cruz Counties*

SHZR 141: *Seismic Hazard Zones in the Sacramento East and Sacramento West 7.5' Quadrangles, Sacramento and Yolo Counties*

SHZR 142: *Seismic Hazard Zones in the Byron Hot Springs 7.5' Quadrangle, Contra Costa and Alameda Counties*

SHZR 143: *Seismic Hazard Zones in the Sebastopol 7.5' Quadrangle, Sonoma County*

SMIP24: *Proceedings of the SMIP 2024 Seminar on Utilization of Strong-Motion Data*

SR 259: *Submarine Landslides Offshore California*

Web applications: Critical Minerals; Geologic Map Index; Publications Search