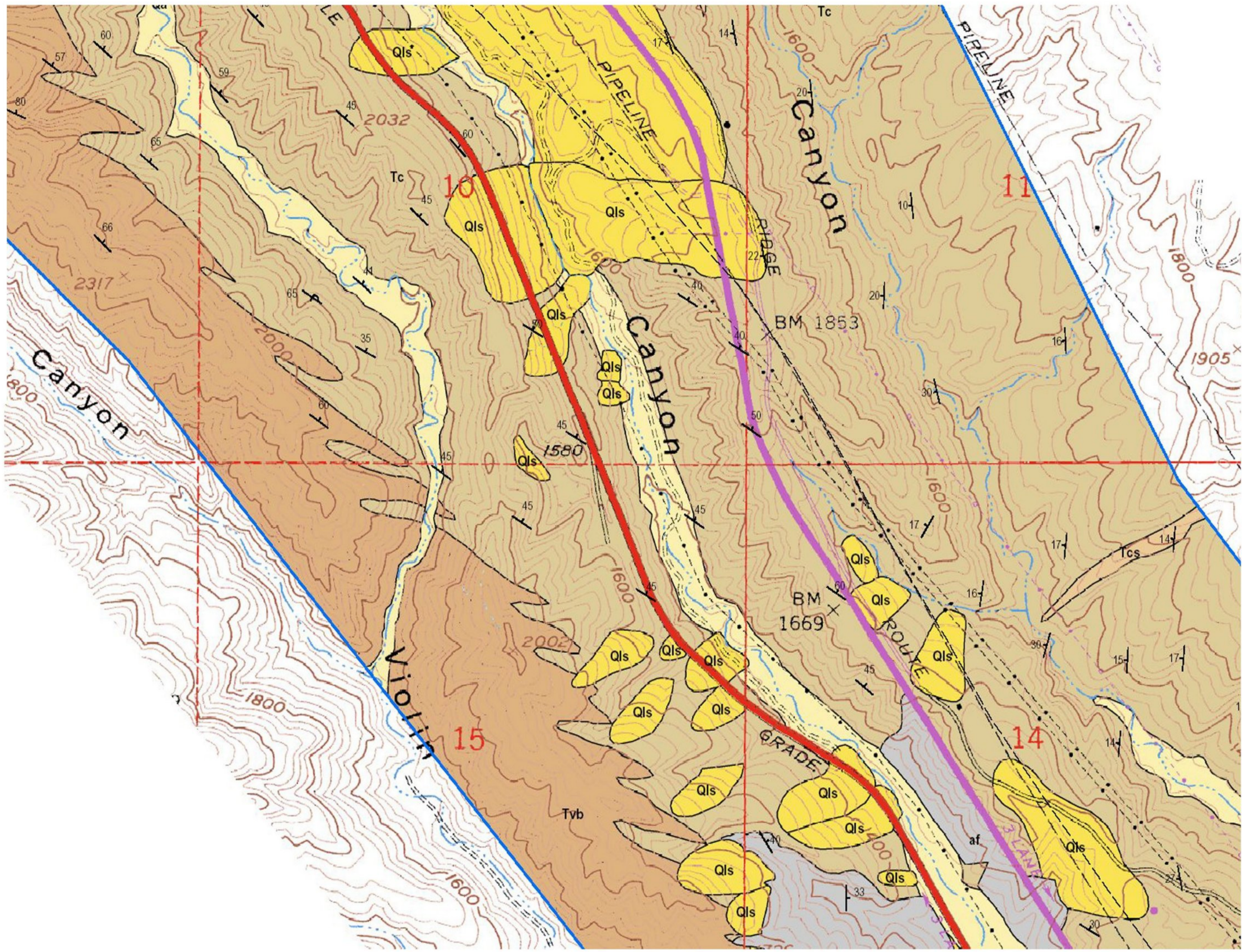
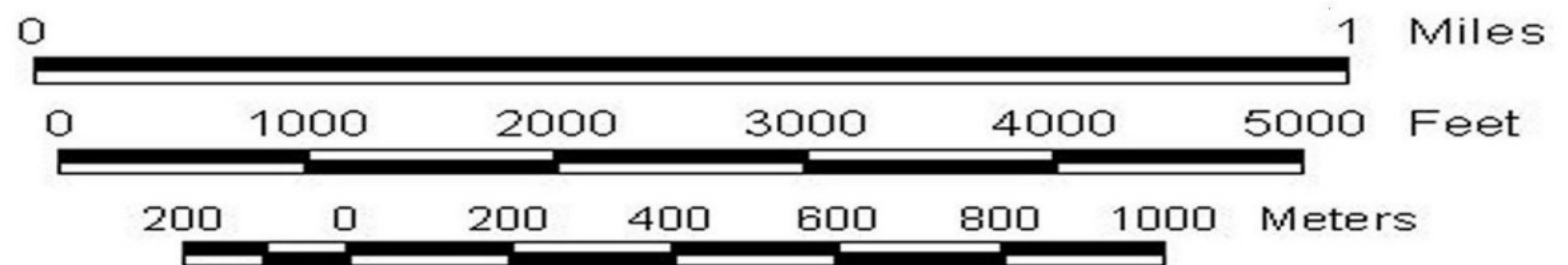


Geologic Map of the Highway 5 corridor Los Angeles County, California



topographic base map from
USGS Whitaker Peak
quadrangle



LANDSLIDES IN THE INTERSTATE 5 CORRIDOR
BETWEEN VALENCIA AND GORMAN,
LOS ANGELES COUNTY, CALIFORNIA
by B.D. Foster
Plate 1, Map 4 of 14