



California  
**Department of  
Conservation**  
Geologic Energy Management  
Division

# Operator Workshop June 2022

**By: WellSTAR and GIS Team**

# AGENDA

- Completion Interval Capture and Purpose (5 minutes)
  - Notice of Intention
  - Well Summary
  - Completion Interval Viewing on Well Detail Page
- GIS Well Finder (5 minutes)
- Q & A (40 minutes)

# Completion Interval Capture and Purpose



## What and Where?

New or proposed changes to Completion Intervals should be entered and approved during the permitting process through the Notice of Intention form.

- Can be added or edited through Well Summary.

Captured at the Wellbore Level.

\*Completion Interval Field, Area and Pool can NOT be edited once approved.

## Why?

Completion Intervals are drivers of Field, Area, Pool selections in forms:

- Application for Injection Approval
- UGS Project Information
- Production/Injection Reporting forms\*

\*On permit approval, the approved completion interval will allow reporting through Monthly forms (OG110, OG110B, OG110D) and Quarterly form (OG110Q, OG110BQ, OG110FQ).

# Completion Interval Capture - Notice of Intention

## Step 8: Completion & Perforation – Completion Interval

### Notice of Intention -

Form ID: [ ] Form Navigation [ ? ]

- 1. Form Information
- 2. EDD Submission
- 3. Operator Information
- 4. Well Information 1
- 5. Well Information 2
- 6. Location Information
- 7. Feature & Cement
- 8. Completion & Perforation**
- 9. Proposed Work
- 10. CEQA Information

Completion & Perforation [Hide Form Navigation]

API Number Well Designation Field

Well Type Notice Type  
OG New Drill

Please enter information on the Completion Intervals and Completion perforations below. \* Indicates Required Field

Completion Interval

Advanced Filtering Actions

Unique ID ↑	Type	Interval Status	Top MD (ft)	Bottom MD (ft)	Status	Actions
C1	Oil & Gas	Active	992.0	1890.0	New	<div>Edit Interval Delete Interval</div>

Completion Interval

\* Indicates Required Field

Type \* Interval Status \*  
Oil & Gas Active

Top MD (ft) \* Bottom MD (ft) \*  
992.0 1890.0

Field \*  
Belridge, South

Area \*  
Any Area

Pool Code \*  
Diatomite

Formation \*  
Reef Ridge-Diatomite

Cancel Save

New Intervals can be added using Grid Actions.

Current intervals can have changes proposed using row actions. Current Intervals Field, Area and Pool cannot have changes proposed.

# Completion Interval Capture - Well Summary

## Step 9: Completion & Perforation – Completion Interval

### Well Summary -

Form

Form Navigation

1. Form Information
2. EDO Submission
3. Operator Information
4. Permit Information
5. Well Information
6. Location Information
7. Wellhead Equipment
8. Feature & Cement
- 9. Completion & Perforation**
10. Document Upload

Completion & Perforation

API Number Well Designation Field

Well Type Notice Type

Oil & Gas New Drill

Please enter information on the Completion Intervals and Completion perforations below.

Completion Interval

Unique ID	Type	Interval Status	Top MD (ft)	Bottom MD (ft)	Status	Actions
C2	Oil & Gas	Active	992	1890	Current	<div>Actions</div> <div>Propose Interval Change</div> <div>Propose Delete Existing Interval</div>

Completion Interval

\* Indicates Required Field

Type \* Interval Status \*

Oil & Gas Active

UIC Project Code

Operational MASP

Top MD (ft) \* Bottom MD (ft) \*

992 1890

Field \*

Belridge, South

Area \*

Any Area

Pool Code \*

Diatomite

Formation \*

Reef Ridge-Diatomite

Cancel Save

New Intervals can be added, or existing intervals can have changes proposed to Type, Status, Depths or Formation.

### Completion Interval Grid, Status Column:

- New = new to form, all fields editable dependent on interval type
- Current = existing interval, Field, Area and Pool are not editable
- Proposed = changed within form, edits will apply on form approval
- Proposed Delete = interval will be deleted on form approval
  - Not available if production has been submitted

# Completion Interval Viewing



Completion Intervals are displayed on the Well Detail Page – Summary – Wellbore Section

Wellbore	-00	Type: Oil & Gas Feet Above Ground: 14	Status: Active Elevation Above Sea Level: 569	Wellbore Spud Date: 6/10/2022 Wellbore Direction: Directional	Rig Release Date: 6/15/2022	Completion Date: 6/15/2022	Depth Datum: Kelly Bushing	
Bottom Hole (MD): 1910	Bottom Hole (TVD): 1890	Plugback Depth (MD): N/A		Plugback Depth (TVD): N/A	Base of Fresh Water: N/A			
Wellbore Construction Feature Record								
Conductor	Top MD: 14'	Bottom MD: 54'	Outside Diameter: 14.000"	Inside Diameter: N/A	Weight: 36.75	Grade/Type: OTHER	New Pipe: No	
Surface Casing	Top MD: 14'	Bottom MD: 200'	Outside Diameter: 9.625"	Inside Diameter: N/A	Weight: 36	Grade/Type: K55	New Pipe: No	
Borehole	Top MD: 14'	Bottom MD: 54'	Outside Diameter: 24.000"	Inside Diameter: N/A	Weight: N/A	Grade/Type: N/A	New Pipe: No	
Borehole	Top MD: 200'	Bottom MD: 1890'	Outside Diameter: 8.750"	Inside Diameter: N/A	Weight: N/A	Grade/Type: N/A	New Pipe: No	
Production Casing	Top MD: 200'	Bottom MD: 1890'	Outside Diameter: 5.500"	Inside Diameter: N/A	Weight: 15.5	Grade/Type: J55	New Pipe: No	
Borehole	Top MD: 54'	Bottom MD: 200'	Outside Diameter: 12.250"	Inside Diameter: N/A	Weight: N/A	Grade/Type: N/A	New Pipe: No	
Completions								
Completion Interval		Type: Oil & Gas	Interval Status: Active	Field: Belridge, South	Area: Any Area	Pool Code: Diatomite		
Top MD: 992.0'	Bottom MD: 1890.0'	Formation: Reef Ridge-Diatomite		Max. Daily Injection Rate: N/A ⓘ	Max. Cumulative Volume: N/A ⓘ			
Perforations								
Type	Status	Diameter	Top	Bottom	Spacing	Number of Shots	Perforation Date	Perforation Notes
Shot	Open	N/A	1370'	1810'	N/A	N/A	6/15/2022	

# Well Finder Updates

NEW

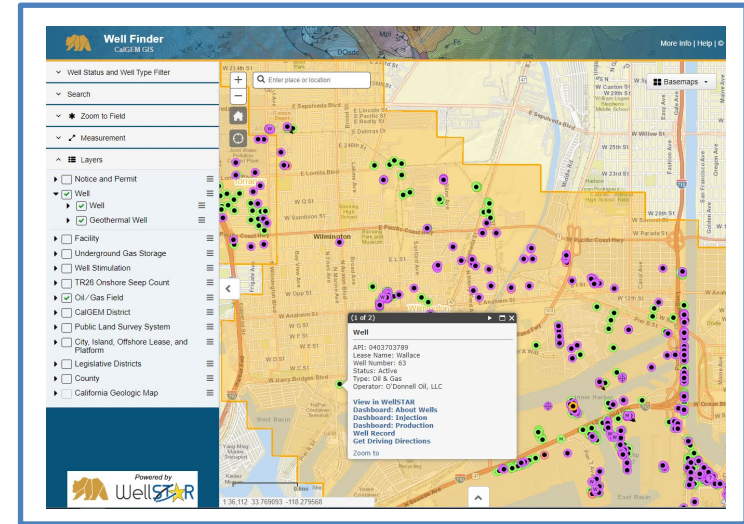
## Next version (3.0)

- Releasing in August 2022
- Same content & capabilities
- Replacing user interfaces +
- Enhanced query filters +

## Future version (3.1)

- Release date, TBD
- Adding content, TBD

## Current Well Finder, v2



Comments/Suggestions ... email your ideas to the WellSTAR team

# Questions?