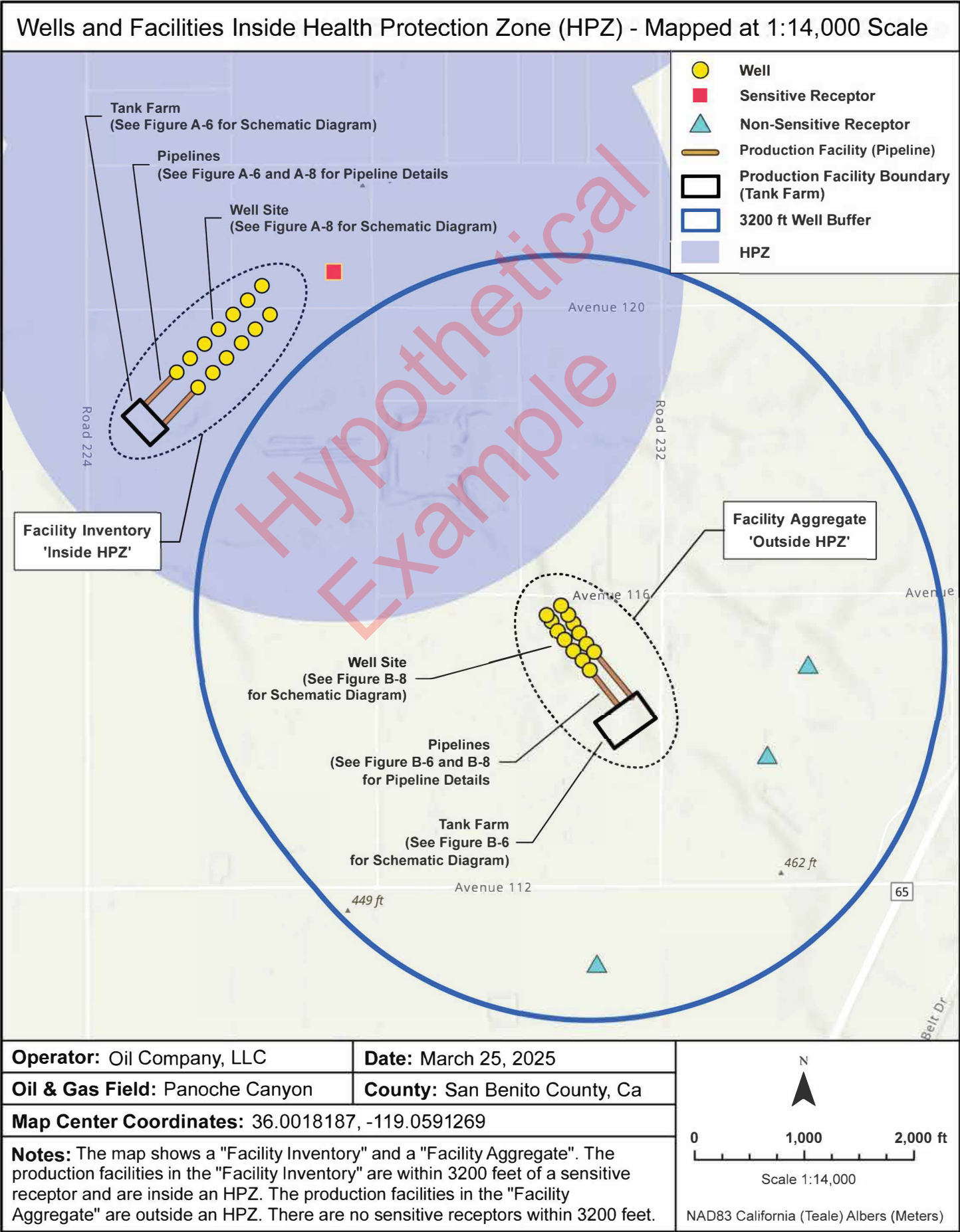
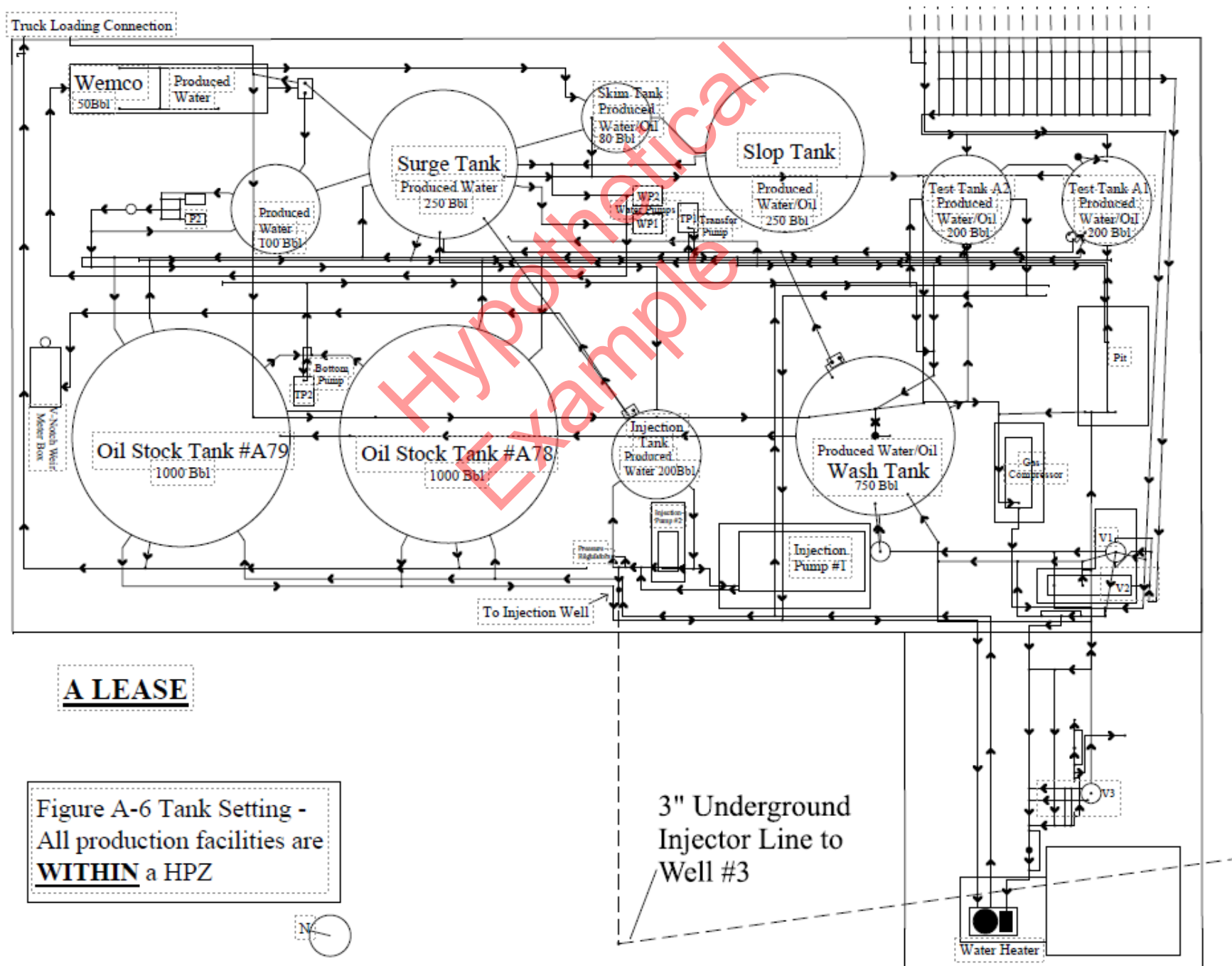


# Example Plot Plan Map for Annual Inventory





## A LEASE

Figure A-6 Tank Setting -  
All production facilities are  
**WITHIN** a HPZ



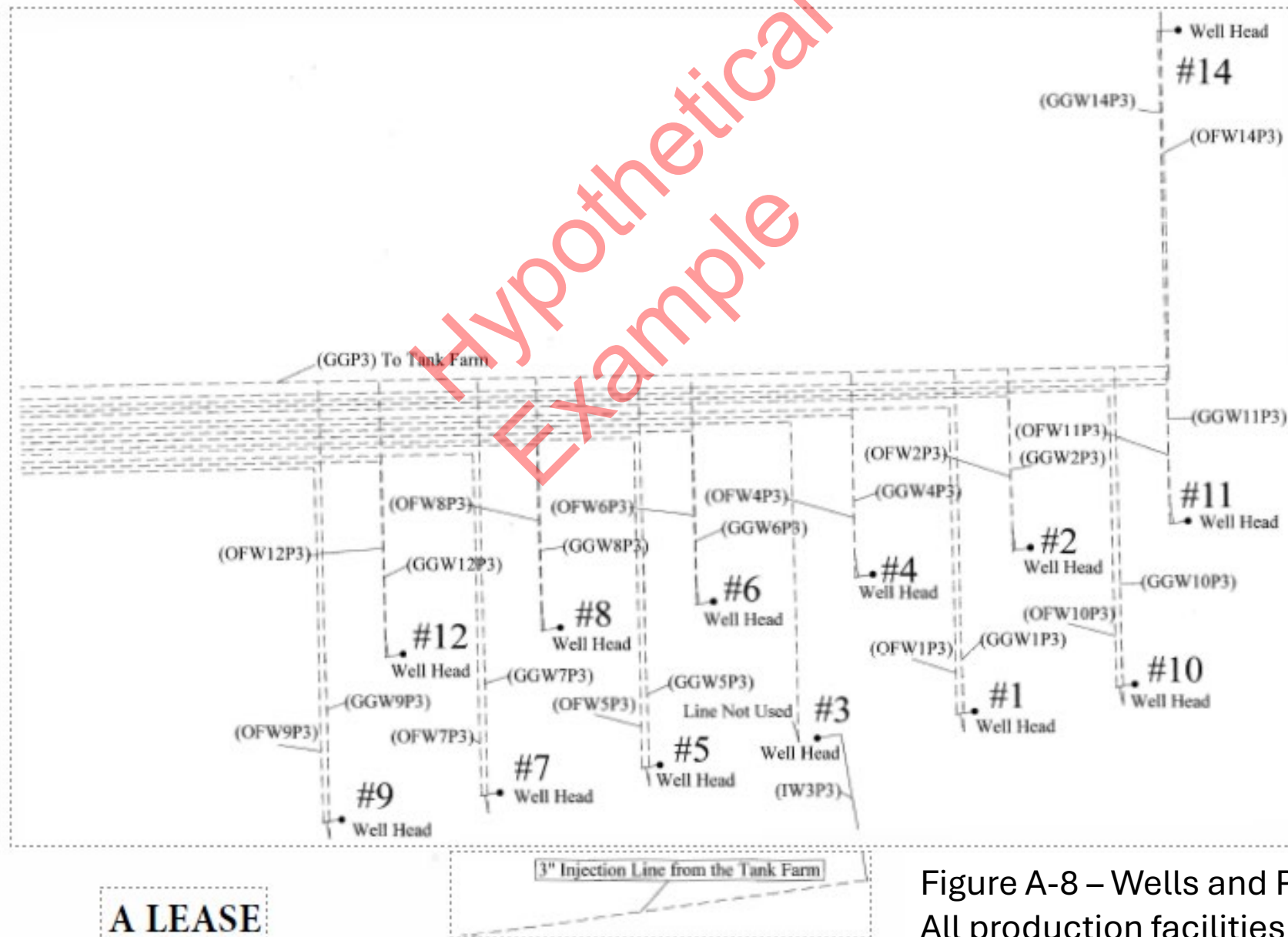


Figure A-8 – Wells and Pipelines  
All production facilities are  
**WITHIN** a HPZ

# Example Annual Inventory Inside HPZ

Type of Inventory:	Annual Inventory Report	Form ID:	
Operator:	CA Oil Company		
Operator Code:	1234567		
Report Prepared By:	Operator Representative		

Well/Facility Information										Sensitive Receptor Information			
Type of Asset	Well API Number	Well Name	Well Type	Production Facility Type	Facility ID (If not a W)	Facility Name (If not a W)	Field Name	Latitude Asset (NAD83)	Longitude Asset (NAD83)	Receptor Type	Distance (ft)	Latitude Receptor (NAD83)	Longitude Receptor (NAD83)
Well	0408700001		1 Oil & Gas	Panoche Canyon			Panoche Canyon	36.0018187	-119.0591269	1765.1(C) (1) A residence, including a private home, condominium, apartment, and living c	500	36.012223	-119.0591301
Well	0408700002		2 Oil & Gas		Panoche Canyon	36.0018187	-119.0591269	1765.1(C) (1) A residence, including a private home, condominium, apartment, and living c	450	36.012223	-119.0591301		
Well	0408700003		3 Waterflood		Panoche Canyon	36.0018187	-119.0591269	1765.1(C) (1) A residence, including a private home, condominium, apartment, and living c	490	36.012223	-119.0591301		
Well	0408700004		4 Oil & Gas		Panoche Canyon	36.0018187	-119.0591269	1765.1(C) (1) A residence, including a private home, condominium, apartment, and living c	600	36.012223	-119.0591301		
Well	0408700005		5 Oil & Gas		Panoche Canyon	36.0018187	-119.0591269	1765.1(C) (1) A residence, including a private home, condominium, apartment, and living c	520	36.012223	-119.0591301		
Well	0408700006		6 Oil & Gas		Panoche Canyon	36.0018187	-119.0591269	1765.1(C) (1) A residence, including a private home, condominium, apartment, and living c	523	36.012223	-119.0591301		
Well	0408700007		7 Oil & Gas		Panoche Canyon	36.0018187	-119.0591269	1765.1(C) (1) A residence, including a private home, condominium, apartment, and living c	465	36.012223	-119.0591301		
Well	0408700008		8 Oil & Gas		Panoche Canyon	36.0018187	-119.0591269	1765.1(C) (1) A residence, including a private home, condominium, apartment, and living c	800	36.012223	-119.0591301		
Well	0408700009		9 Oil & Gas		Panoche Canyon	36.0018187	-119.0591269	1765.1(C) (1) A residence, including a private home, condominium, apartment, and living c	650	36.012223	-119.0591301		
Well	0408700010		10 Oil & Gas		Panoche Canyon	36.0018187	-119.0591269	1765.1(C) (1) A residence, including a private home, condominium, apartment, and living c	490	36.012223	-119.0591301		
Well	0408700011		11 Oil & Gas		Panoche Canyon	36.0018187	-119.0591269	1765.1(C) (1) A residence, including a private home, condominium, apartment, and living c	480	36.012223	-119.0591301		
Well	0408700012		12 Oil & Gas		Panoche Canyon	36.0018187	-119.0591269	1765.1(C) (1) A residence, including a private home, condominium, apartment, and living c	555	36.012223	-119.0591301		
Well	0408700013		14 Oil & Gas		Panoche Canyon	36.0018187	-119.0591269	1765.1(C) (1) A residence, including a private home, condominium, apartment, and living c	630	36.012223	-119.0591301		
Production Facility Aggregate					Production Facility Aggregate	A-6	Lease A Tank Farm	Panoche Canyon	36.0018187	-119.0591269	1765.1(C) (1) A residence, including a private home, condominium, apartment, and living c	800	36.012223
Production Facility Aggregate				Production Facility Aggregate	A-8	Lease A Wells and Pipelines	Panoche Canyon	36.0018187	-119.0591269	1765.1(C) (1) A residence, including a private home, condominium, apartment, and living c	700	36.012223	-119.0591301

Cover

Instructions

Inventory\_Inside HPZ

Inventory\_Inside HPZ (2)

Inventory\_Outside HPZ

Data Descriptions



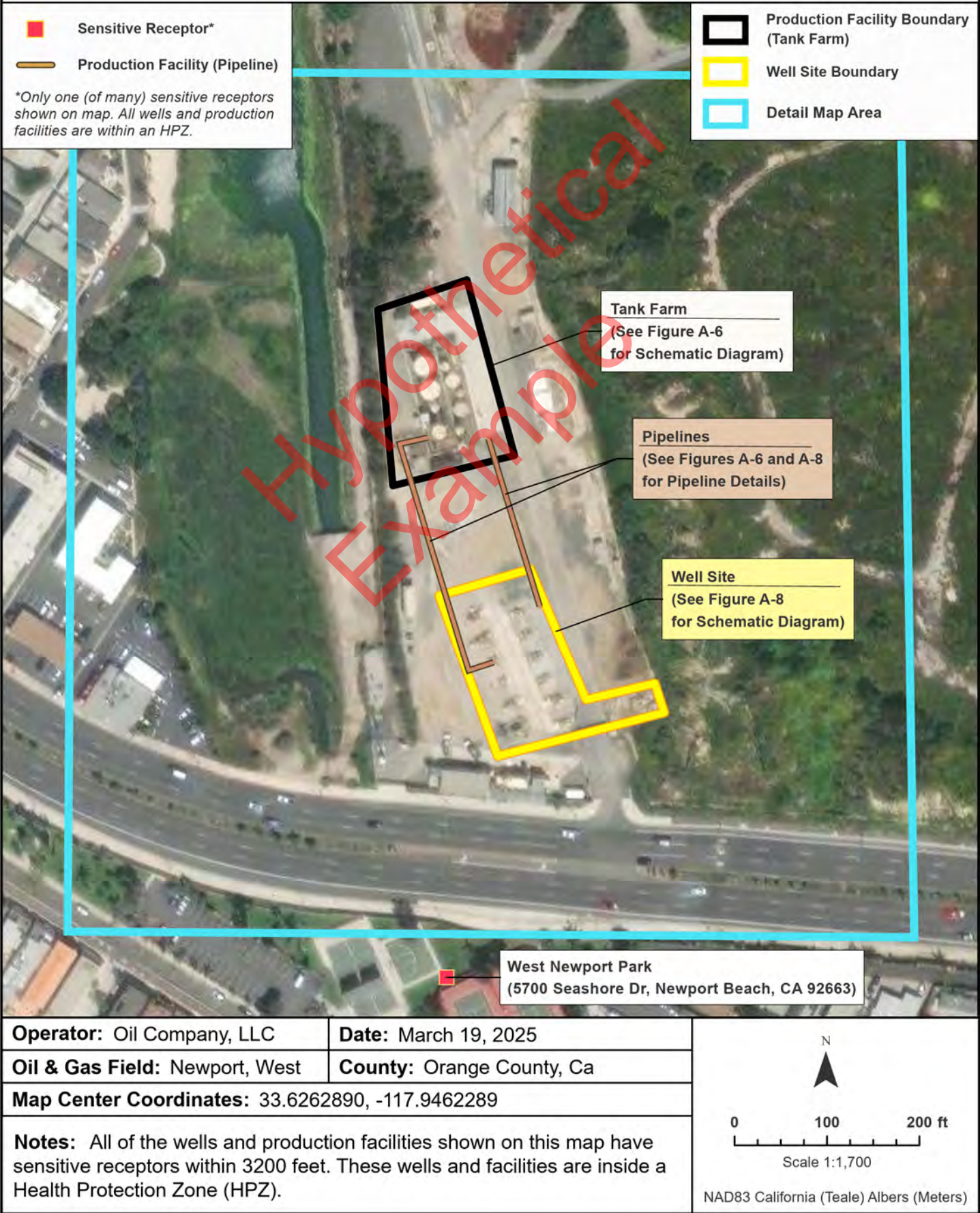
# Example Overview Map for Annual Inventory

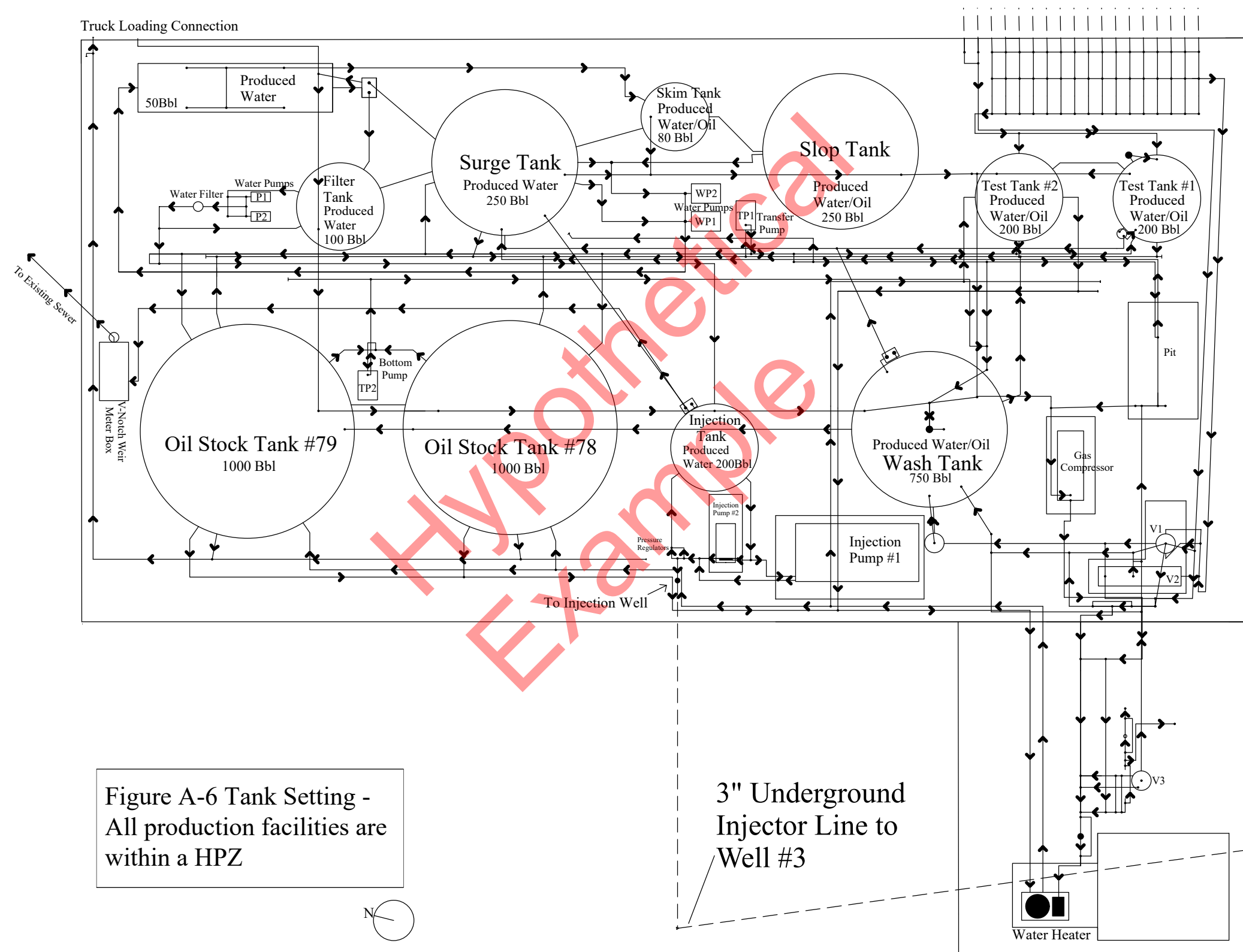




# Example Detail Map for Annual Well Inventory

Wells & Facilities Inside Health Protection Zone (HPZ) - Mapped at 1:1,700 Scale





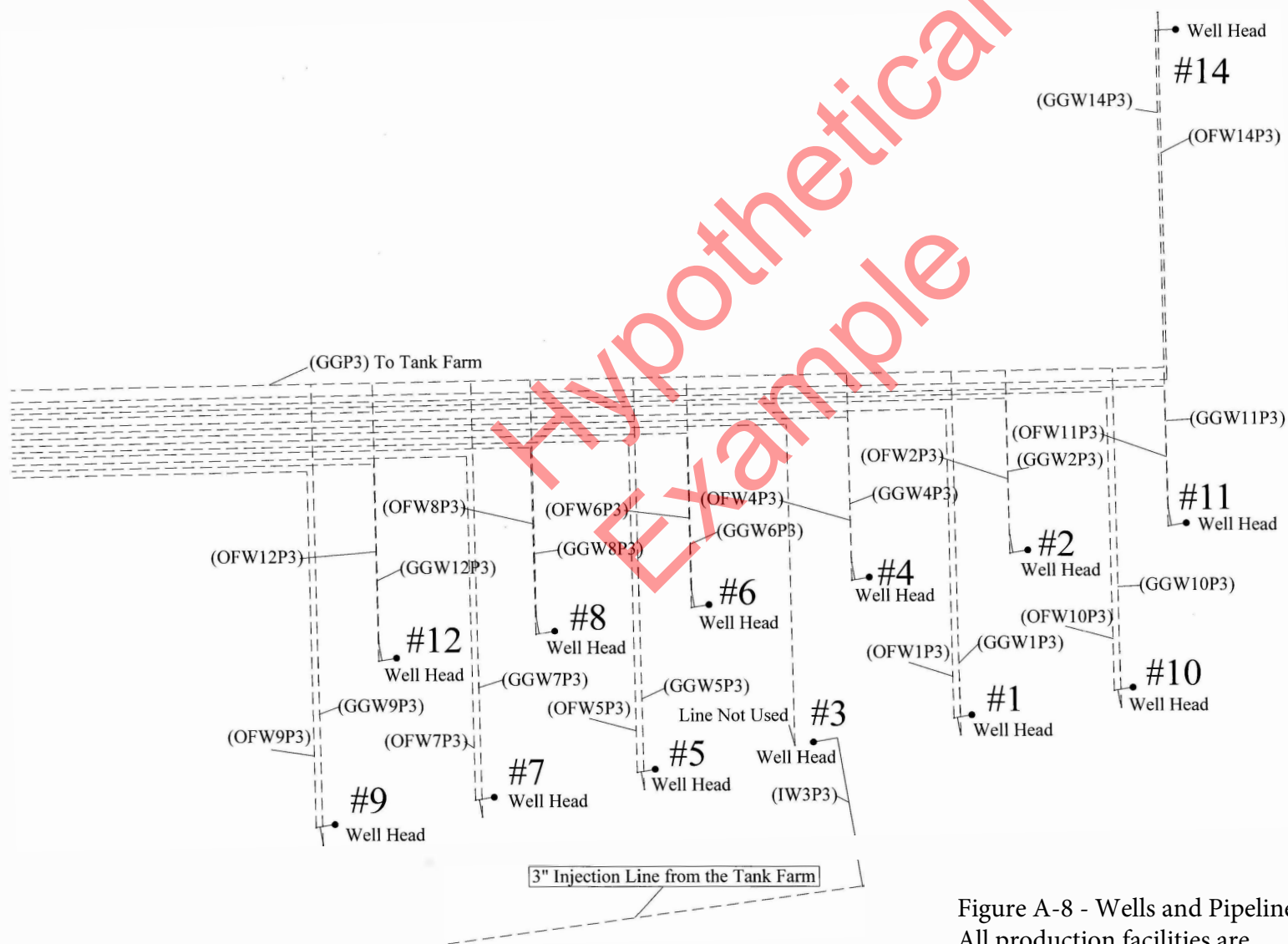


Figure A-8 - Wells and Pipelines  
All production facilities are within a HPZ



Type of Inventory:	Annual Inventory Report	Form ID:	
Operator:	CA Oil Company		
Operator Code:	1234567		
Report Prepared By:	Operator Representative		

Well/Facility Information										Sensitive Receptor Information			
Type of Asset	Well API Number	Well Name	Well Type	Production Facility Type	Facility ID (If not a W)	Facility Name (If not a W)	Field Name	Latitude Asset (NAD83)	Longitude Asset (NAD83)	Receptor Type	Distance (ft)	Latitude Receptor (NAD83)	Longitude Receptor (NAD83)
Well	0405900001		1 Oil & Gas	Production Facility Aggregate	A-8	Tank Farm	West Newport	33.62569809	-117.946121	1765.1(C) (2) An education resource, including a preschool, school maintaining transitio	250	33.624839	-117.946541
Well	0405900002		2 Oil & Gas				West Newport	33.62569427	-117.9460373	1765.1(C) (2) An education resource, including a preschool, school maintaining transitio	250	33.624839	-117.946541
Well	0405900003		3 Waterflood				West Newport	33.62577057	-117.9460602	1765.1(C) (2) An education resource, including a preschool, school maintaining transitio	250	33.624839	-117.946541
Well	0405900004		4 Oil & Gas				West Newport	33.62582779	-117.9460983	1765.1(C) (2) An education resource, including a preschool, school maintaining transitio	250	33.624839	-117.946541
Well	0405900005		5 Oil & Gas				West Newport	33.6259079	-117.9462204	1765.1(C) (2) An education resource, including a preschool, school maintaining transitio	250	33.624839	-117.946541
Well	0405900006		6 Oil & Gas				West Newport	33.625901	-117.946121	1765.1(C) (2) An education resource, including a preschool, school maintaining transitio	250	33.624839	-117.946541
Well	0405900007		7 Oil & Gas				West Newport	33.625969	-117.946248	1765.1(C) (2) An education resource, including a preschool, school maintaining transitio	250	33.624839	-117.946541
Well	0405900008		8 Oil & Gas				West Newport	33.62562943	-117.9460983	1765.1(C) (2) An education resource, including a preschool, school maintaining transitio	250	33.624839	-117.946541
Well	0405900009		9 Oil & Gas				West Newport	33.62562943	-117.9460068	1765.1(C) (2) An education resource, including a preschool, school maintaining transitio	250	33.624839	-117.946541
Well	0405900010		10 Oil & Gas				West Newport	33.62569046	-117.9457321	1765.1(C) (2) An education resource, including a preschool, school maintaining transitio	250	33.624839	-117.946541
Well	0405900011		11 Oil & Gas				West Newport	33.6259613	-117.9461594	1765.1(C) (2) An education resource, including a preschool, school maintaining transitio	250	33.624839	-117.946541
Well	0405900012		12 Oil & Gas				West Newport	33.62576675	-117.9461594	1765.1(C) (2) An education resource, including a preschool, school maintaining transitio	250	33.624839	-117.946541
Well	0405900014		14 Oil & Gas				West Newport	33.62583923	-117.9461899	1765.1(C) (2) An education resource, including a preschool, school maintaining transitio	250	33.624839	-117.946541
Production Facility Aggregate				Production Facility Aggregate	A-6	Tank Farm	West Newport	33.625777	-117.946085	1765.1(C) (2) An education resource, including a preschool, school maintaining transitio	500	33.624839	-117.946541
Production Facility Aggregate				Production Facility Aggregate	A-8	Pipelines to tank farm	West Newport	33.625777	-117.946085	1765.1(C) (2) An education resource, including a preschool, school maintaining transitio	250	33.624839	-117.946541