



California
**Department of
Conservation**
Division of Land Resource
Protection

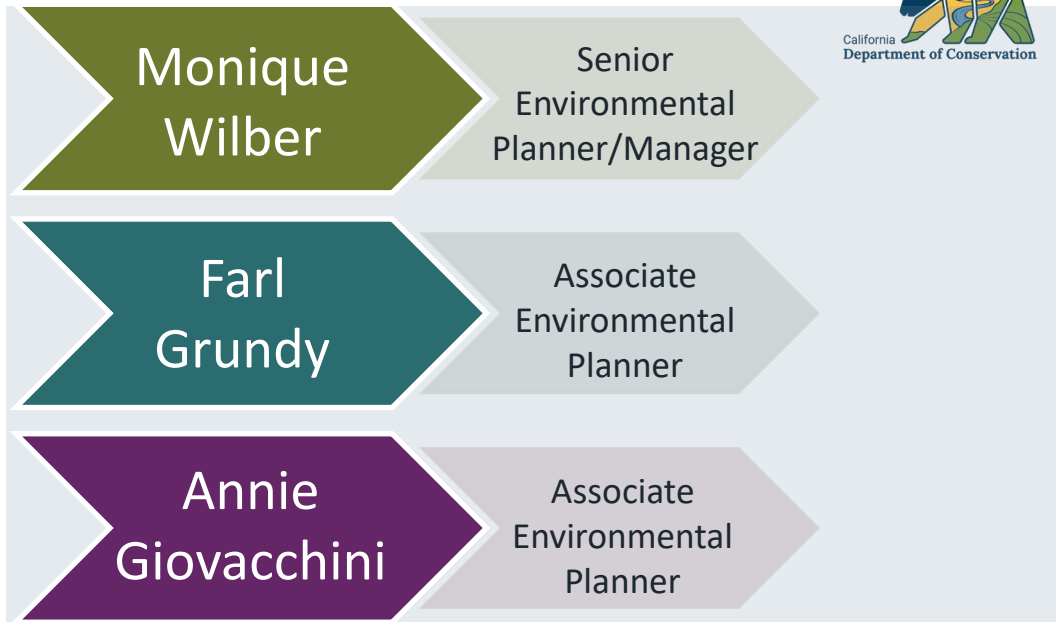
Williamson Act Enrollment Finder App

Land Conservation Act of 1965

Monique Wilber
Farl Grundy
Annie Giovacchini
Division of Land Resource Protection (DLRP)
Williamson Act / CEQA
LCA@conservation.ca.gov
<https://www.conservation.ca.gov/dlrp/wa>



Williamson Act & CEQA Program



Team WA/CEQA!





History of Williamson Act Reporting

- Open Space Subventions 1972-2010
- 2004 enrollment approximately 16.6 million
- Payments end 2010, reporting decreases





File Home Insert Page Layout Formulas Data Review View Help Acrobat

Clipboard Font Alignment Number Styles Cells Editing Sensitivity

C23

Current Williamson Act Enrollment Form 102	Williamson Act Continuing Prime	Williamson Act Continuing Non-Prime	Williamson Act Nonrenewal Prime	Williamson Act Nonrenewal Non-Prime	Agricultural Conservation Easement Prime	Agricultural Conservation Easement Non-Prime	Other Eligible Open Space Restriction Enrollment
Beginning Total	#N/A	#N/A	#N/A	#N/A	#N/A	#N/A	#N/A
New Enrollments	0.00	0.00			0.00	0.00	0.00
Subtotals	#N/A	#N/A	#N/A	#N/A	#N/A	#N/A	#N/A
+ Nonrenewals Initiated			0.00	0.00			
- Nonrenewals Initiated	0.00	0.00					
- Nonrenewals Expired			0.00	0.00			
+ Nonrenewals Withdrawn	0.00	0.00					
- Nonrenewals Withdrawn			0.00	0.00			
Subtotals	#N/A	#N/A	#N/A	#N/A	#N/A	#N/A	#N/A
- Cancellations/Abandonments	0.00	0.00	0.00	0.00			0.00
- Public Acquisitions	0.00	0.00	0.00	0.00			0.00
- City Annexations	0.00	0.00	0.00	0.00			0.00
- FSZ Transfers	0.00	0.00	0.00	0.00			0.00
- Easement Exchange	0.00	0.00	0.00	0.00			0.00
Subtotals	#N/A	#N/A	#N/A	#N/A	#N/A	#N/A	#N/A
+/- Adjustments	0.00	0.00	0.00	0.00	0.00	0.00	0.00
Ending Totals	#N/A	#N/A	#N/A	#N/A	#N/A	#N/A	#N/A

[Link to Main Page](#)





Williamson Act Reporting Requirements



- [Government Code Section 51237.5](#)
- Annually (Jan 30th)
- WA contracted land
- Geographic Information System Files (GIS)
- [New Williamson Act Enrollment Requirements](#)



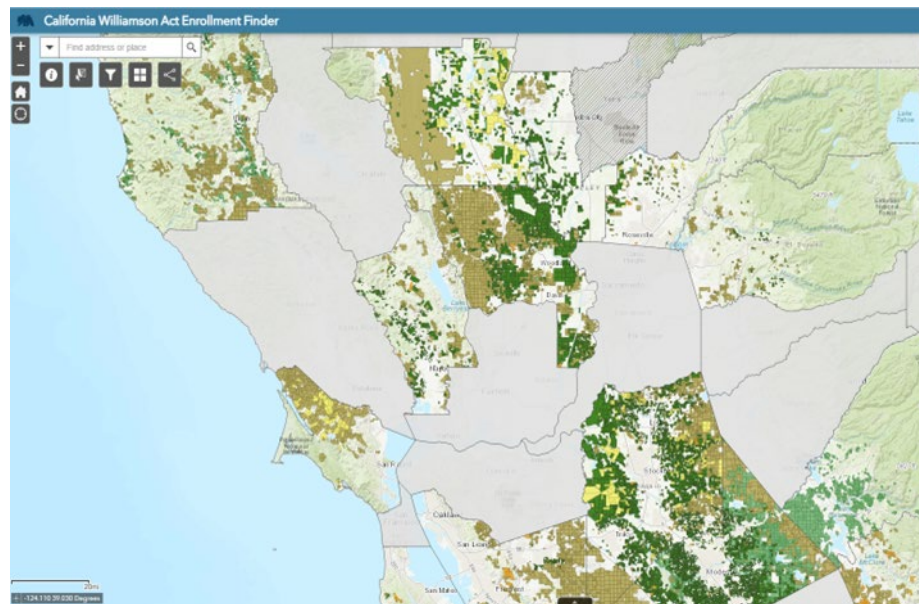
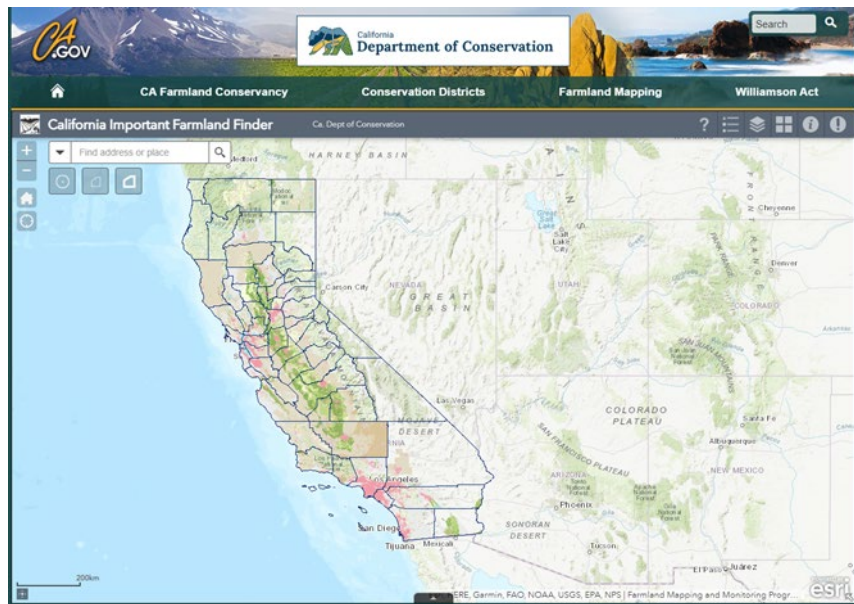
Data submission

Williamson Act enrollment data (GIS files) should be submitted to:

Department of Conservation
Division of Land Resource Protection
Attn: Farl Grundy
LCA@conservation.ca.gov
Farl.Grundy@conservation.ca.gov



Enrollment Data



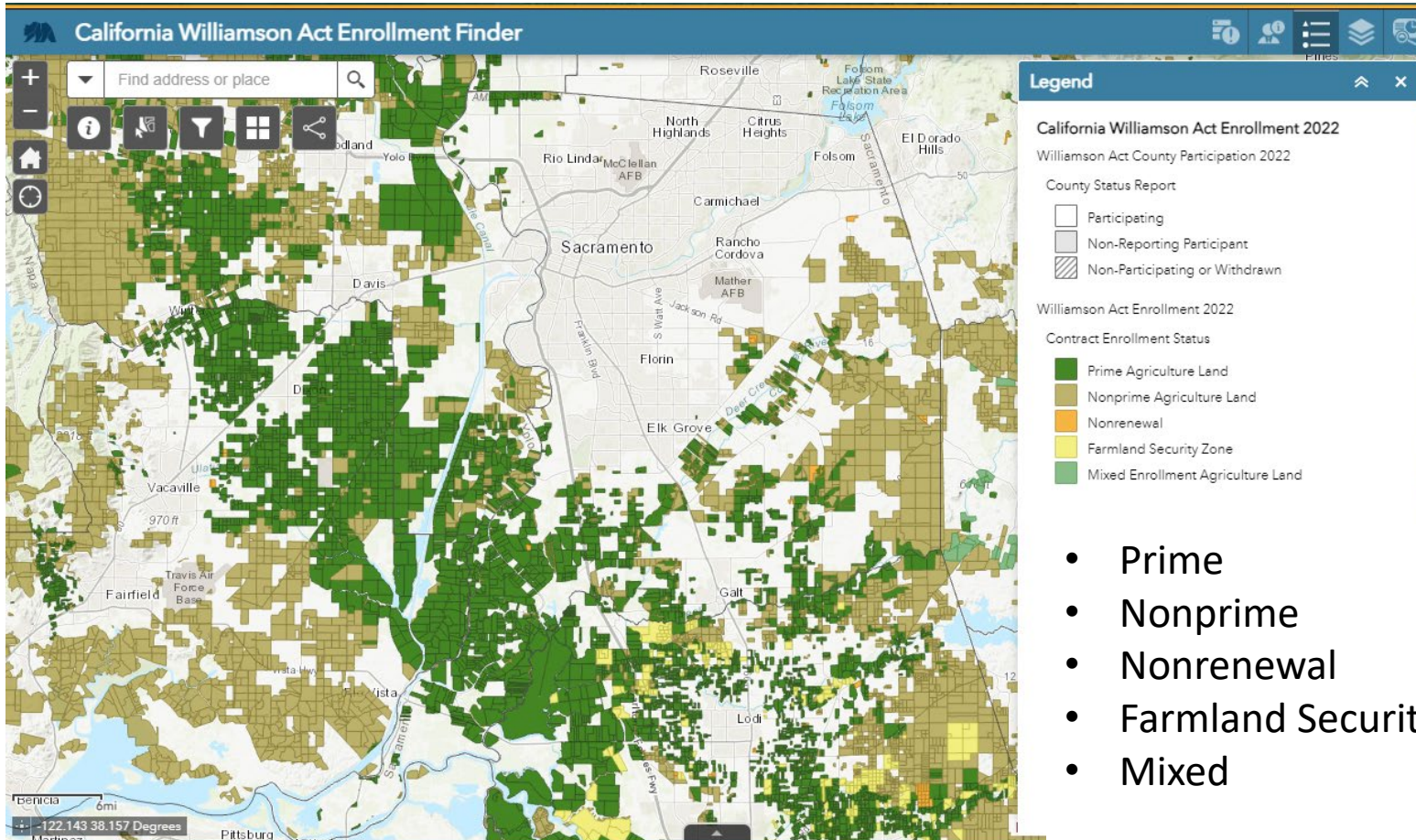
[California Williamson Act Enrollment Finder App](#)

California Williamson Act Enrollment Finder App



- Overview scale:
- Three overview categories

California Williamson Act Enrollment Finder App



- Prime
- Nonprime
- Nonrenewal
- Farmland Security Zone
- Mixed



THANK YOU

Questions?

Williamson Act/CEQA Team
LCA@conservation.ca.gov
<https://www.conservation.ca.gov/dlrp/wa>