

# Geology of the Highway 1 Corridor between Bodega Bay and Fort Ross, Sonoma County, California

prepared for the  
California Department of Transportation

by  
M.W. Manson, C.M. Huyette, C.J. Wills, M.G. Smelser,  
M.E. Fuller, C. Domrose and C. Gutierrez  
California Geological Survey



## Geologic Units

Quaternary	Holocene	af	Artificial fill
		afbm	Artificial fill over Bay Mud
		Qhc	Modern stream channel deposits
		Qhbs	Latest Holocene beach sand
		Qhds	Holocene dune sand (<10,000 years)
		Qhbm	Holocene Bay Mud
		Qha	Holocene alluvium, undivided
		Qdf	Holocene debris fan
		Qls	Landslide
		Qef	Earth flow
Quaternary	Pleistocene	Qac	Alluvium & Colluvium
		Qc	Colluvium
		Qols	Older landslide
		Qa	Latest Pleistocene to Holocene alluvium, undivided
		Qmt	Pleistocene marine terrace deposits (10,000 to 1.6 million years)
Tertiary	Eocene & Paleocene	Qoa	Early to Late Pleistocene alluvial deposits, undivided (30,000 to 1.6 million years)
		Tb	Basalt
		Tgr	German Rancho Formation
		Tw	Wilson Grove Formation
		Tg	Galloway Formation (?)
		TKfs	Franciscan Coastal Belt sandstone and shale
		KJfs	Franciscan Central Belt sandstone
		KJfm	Franciscan Central Belt "melange"
		KJfc	Franciscan chert
		KJfgs	Franciscan greenstone
Mesozoic	Jurassic - Cretaceous	sp	Franciscan serpentinite
		KJgvc	Great Valley Sequence conglomerate
		Kgr	Granitic rocks at Bodega Head

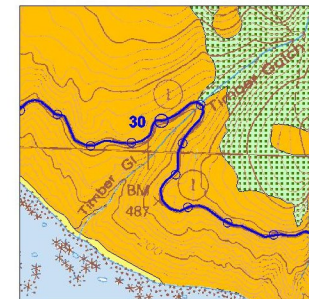
## Geologic Structure Symbols

	Fault, well located
	Fault, approximately located
	Fault, concealed
	Fault, inferred
	San Andreas Fault 1906, well located
	San Andreas Fault 1906, inferred
	San Andreas Fault 1906, concealed
	San Andreas Fault, pre-1906, approximately located
	Salmon Creek Fault Zone boundary
	Salmon Creek Fault Zone boundary, concealed
	Inclined Strata
	Spring

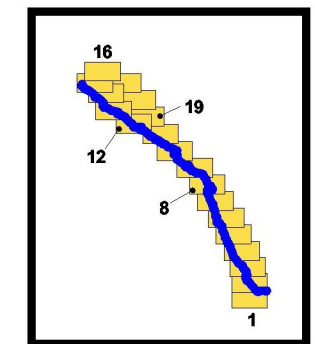
2006



Project Location Map



The geologic map is divided into 19 map sheets as shown at right, arranged from south to north. Postmiles are shown along Highway 1 as above; each mile is labeled and tenths are shown by unlabeled circles.



Corridor Map Sheet Index  
Highway 1 in blue.