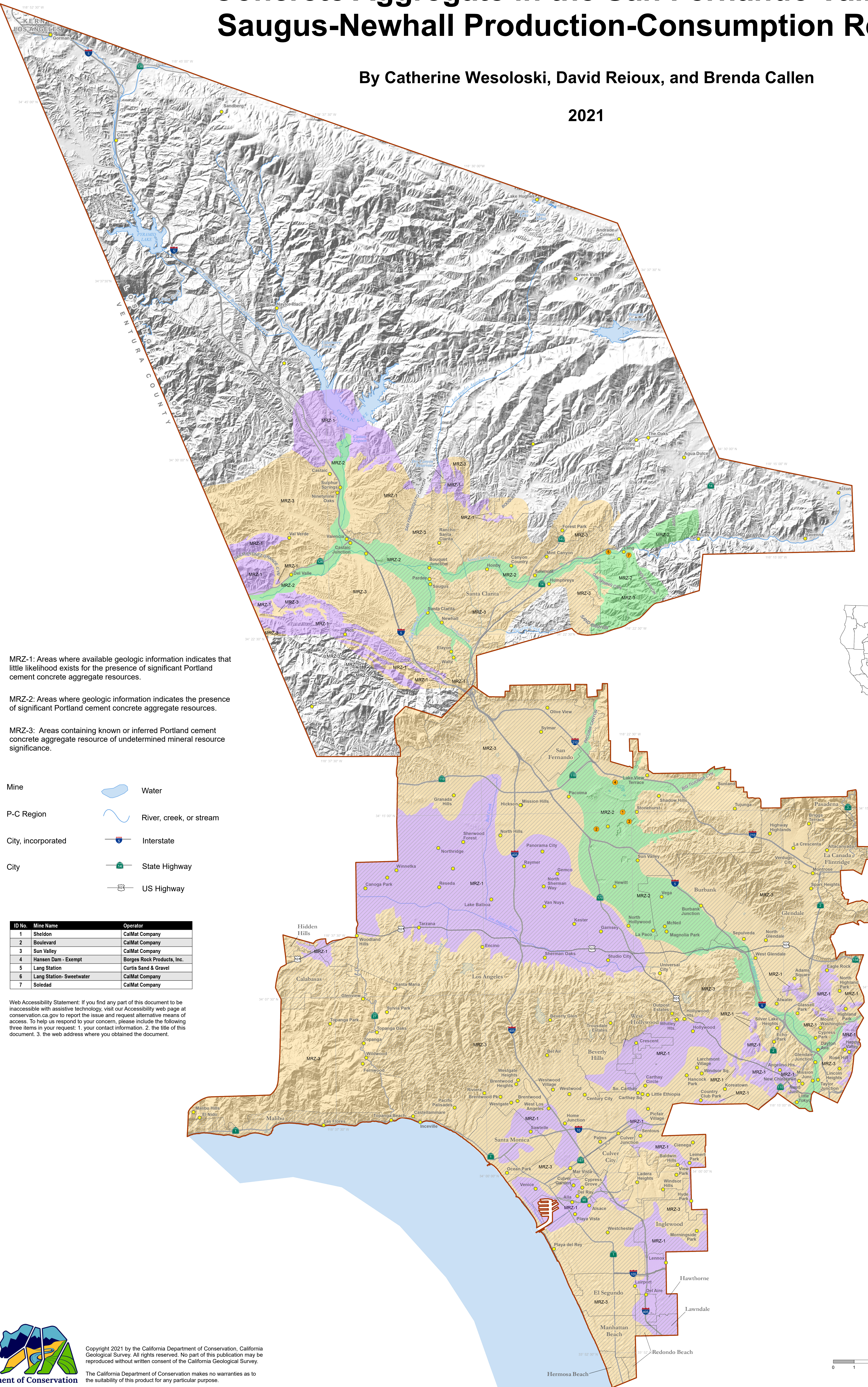


California Geological Survey

Updated Mineral Resource Zones for Portland Cement Concrete Aggregate in the San Fernando Valley and Saugus-Newhall Production-Consumption Regions

By Catherine Wesoloski, David Reioux, and Brenda Callen

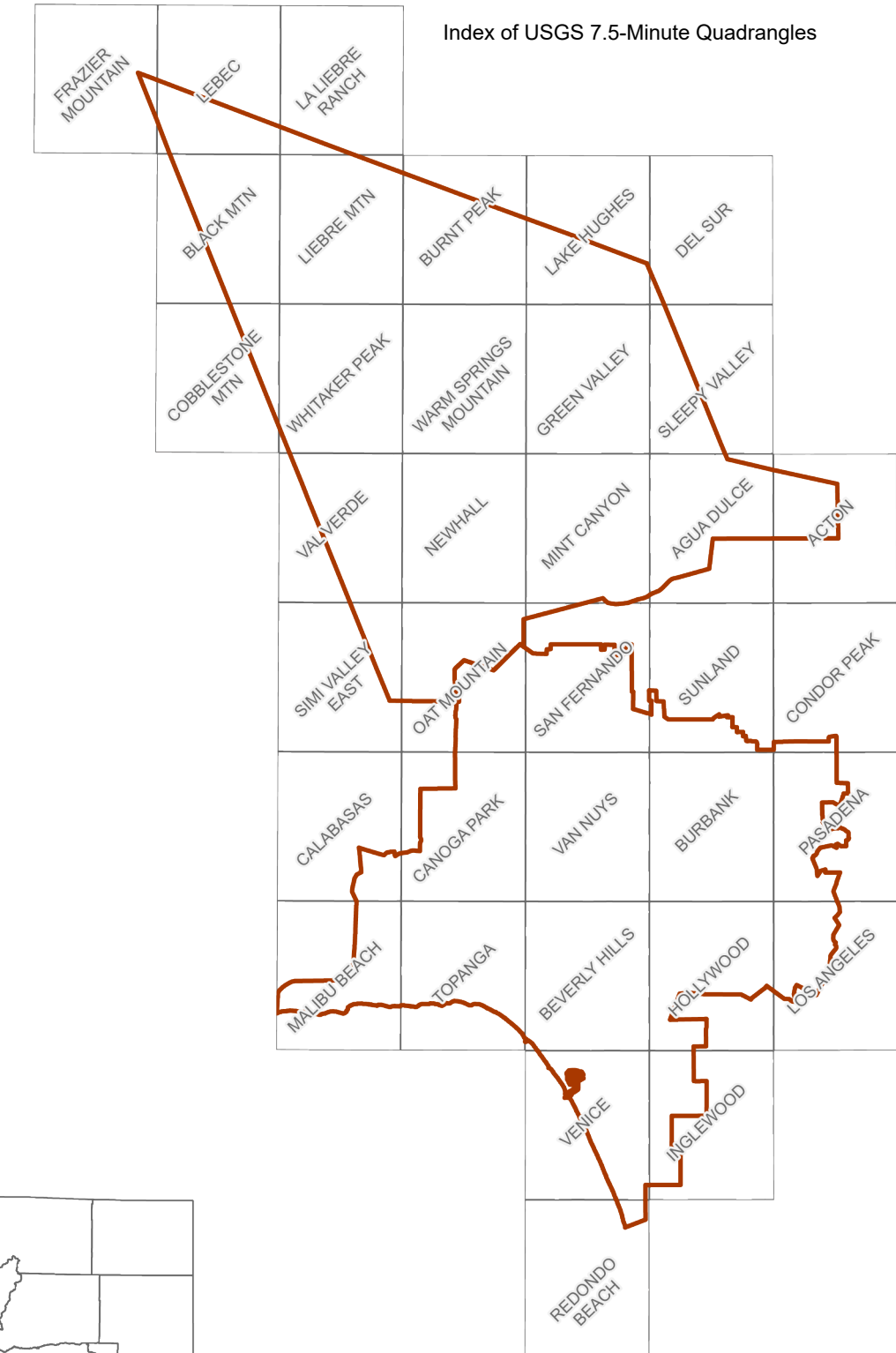
2021



- MRZ-1: Areas where available geologic information indicates that little likelihood exists for the presence of significant Portland cement concrete aggregate resources.
 - MRZ-2: Areas where geologic information indicates the presence of significant Portland cement concrete aggregate resources.
 - MRZ-3: Areas containing known or inferred Portland cement concrete aggregate resource of undetermined mineral resource significance.
- Mine
 - Water
 - P-C Region
 - River, creek, or stream
 - City, incorporated
 - City
 - Interstate
 - State Highway
 - US Highway

ID No.	Mine Name	Operator
1	Sheldon	CallMat Company
2	Boulevard	CallMat Company
3	Sun Valley	CallMat Company
4	Hansen Dam - Exempt	Borges Rock Products, Inc.
5	Lang Station	Curtis Sand & Gravel
6	Lang Station-Sweetwater	CallMat Company
7	Soledad	CallMat Company

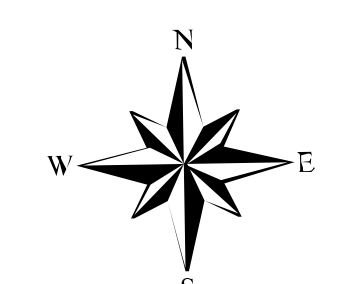
Web Accessibility Statement: If you find any part of this document to be inaccessible with assistive technology, visit our Accessibility web page at conservation.ca.gov to report the issue and request alternative means of access. To help us respond to your concern, please include the following three items in your request: 1. your contact information, 2. the title of this document, 3. the web address where you obtained the document.



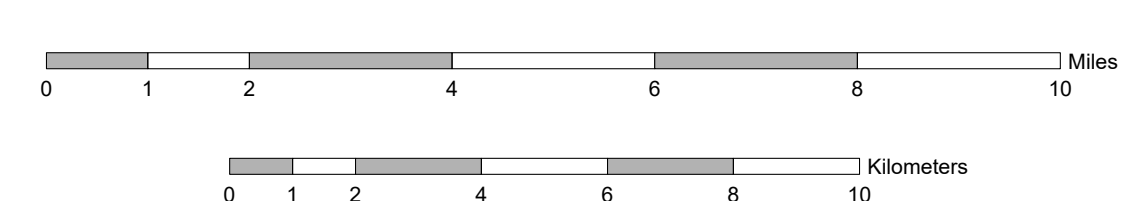
Prepared in Compliance with the Surface Mining and Reclamation Act of 1975, Article 4, Section 2761

Steven R. Bohlen

Steven R. Bohlen, Ph.D.
Acting State Geologist



Map Scale: 1:120,000
Projection: Teale Albers (meters)
Datum: NAD83



Copyright 2021 by the California Department of Conservation, California Geological Survey. All rights reserved. No part of this publication may be reproduced without written consent of the California Geological Survey.

The California Department of Conservation makes no warranties as to the suitability of this product for any particular purpose.

www.conservation.ca.gov