

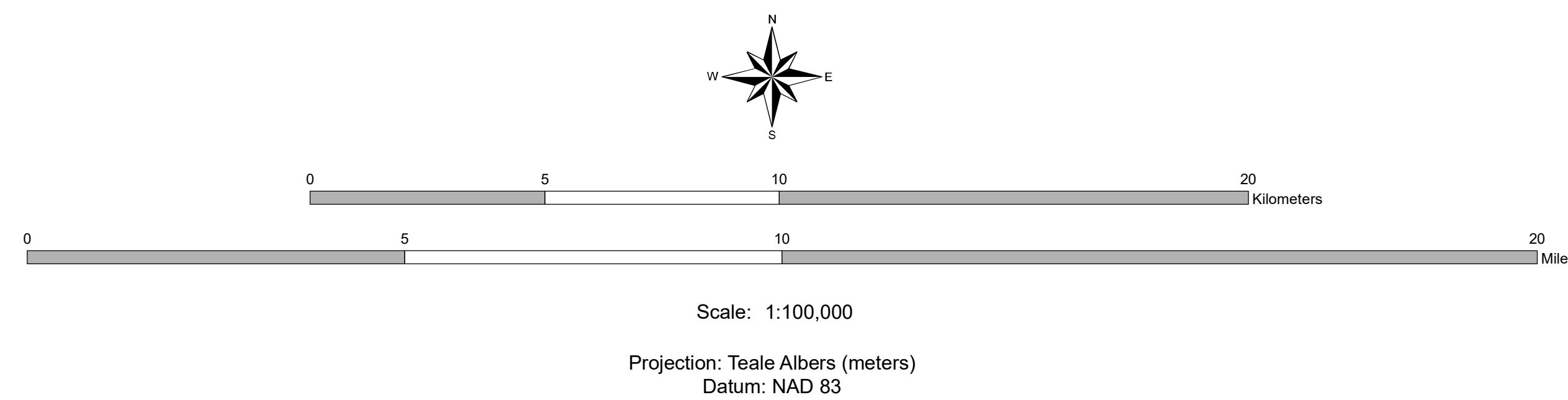
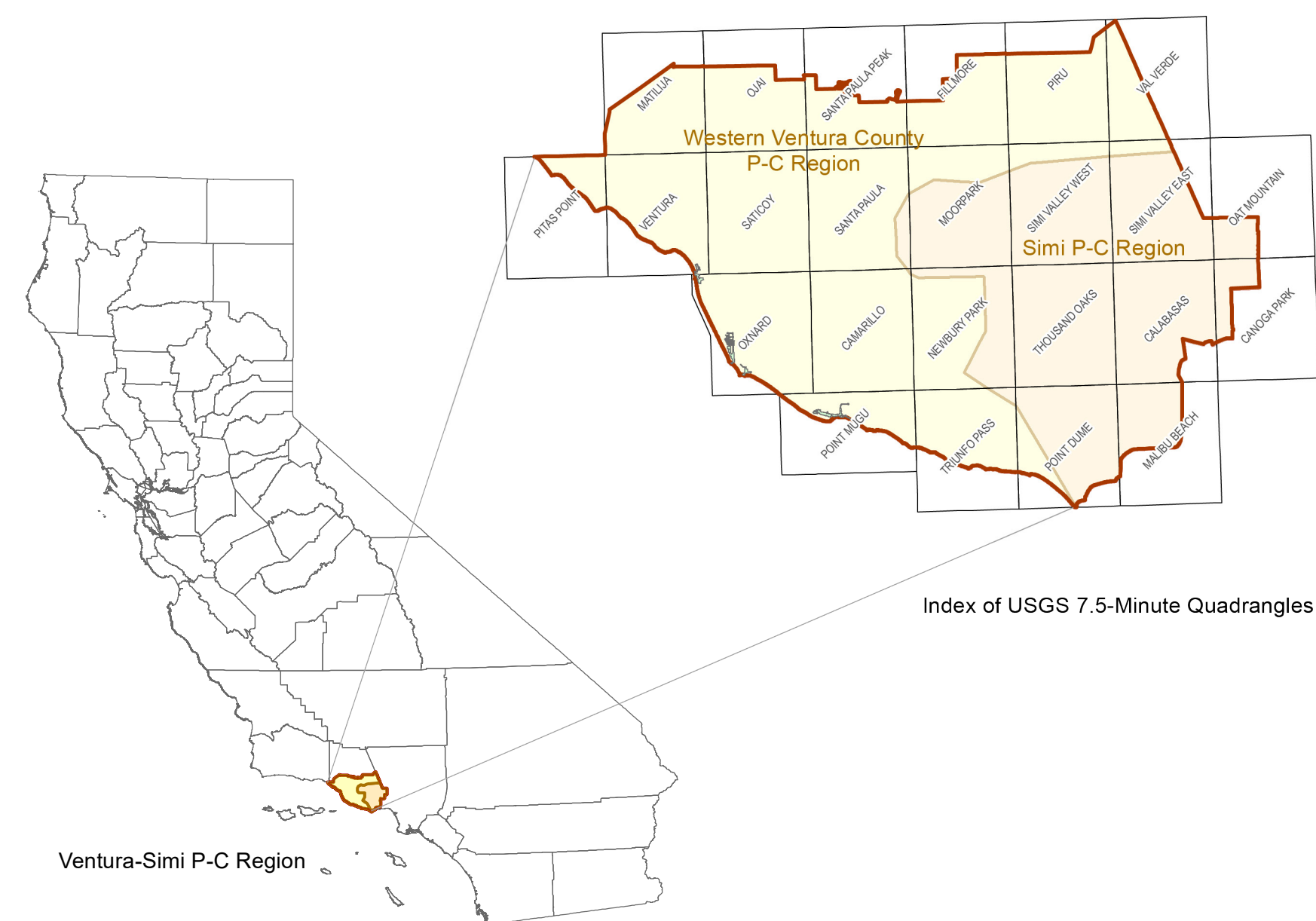
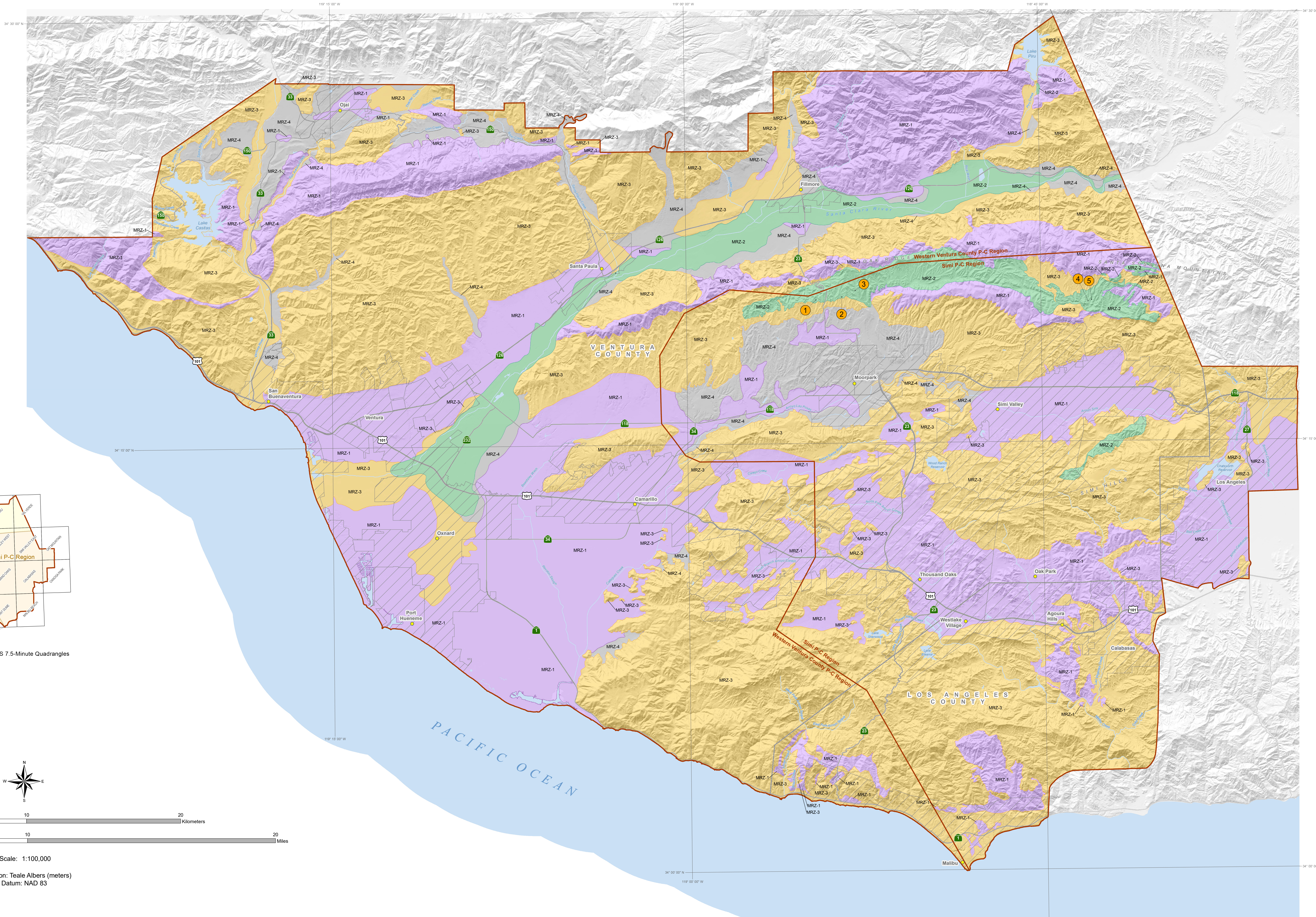
California Geological Survey Mineral Resource Zone Map for Portland Cement Concrete Aggregate in the Western Ventura County and Simi Production-Consumption Regions

By Greg D. Marquis

2022

- MRZ-1: Areas where available geologic information indicates that little likelihood exists for the presence of significant construction aggregate resources.
- MRZ-2: Areas where geologic information indicates the presence of significant construction aggregate resources.
- MRZ-3: Areas containing known or inferred construction aggregate resources of undetermined mineral resource significance.
- MRZ-4: Areas where available geologic information is inadequate to assign to any other mineral resource zone category.
- Water
- Mine Location and Reference No.
- Simi Production-Consumption Region
- Western Ventura County Production-Consumption Region
- County
- City
- Road

No.	Mine ID	Mine	Operator
1	91-56-0032	Grimes Rock	Grimes Rock, Inc.
2	91-56-0028	Wayne J.	Wayne J. Sand & Gravel, Inc.
3	91-56-0014	Moorpark Mine	CEMEX Construction Materials, LP
4	91-56-0021	Tapo Canyon Mine	Gillibrand Industrial Sands, Inc.
5	91-56-0015	Tapo Rock and Sand	Tapo Rock and Sand, Inc.



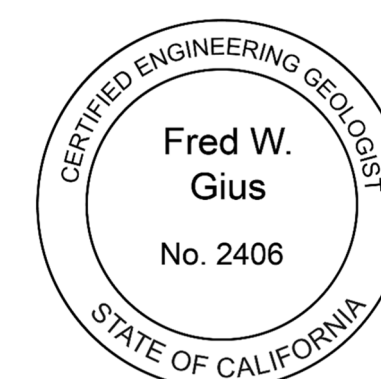
Web Accessibility Statement. We could not make this map fully accessible with assistive technology. To request alternative means of access, please visit our Accessibility web page at <https://www.conservation.ca.gov>. To help us respond to your concern, please include in your request: the title of the map, the web address where you obtained it, and your contact information.

Copyright 2022 by the California Department of Conservation, California Geological Survey. All rights reserved. No part of this publication may be reproduced without written consent of the California Geological Survey.
The California Department of Conservation makes no warranties as to the suitability of this product for any particular purpose.
www.conservation.ca.gov/cgs

Prepared in Compliance with the Surface Mining and Reclamation Act of 1975, Article 4, Section 2761

Fred W. Gius
Date: 7/11/2022

For the State Geologist
(Div. 1, Ch. 2, Section 603.1 PRC)



Date: 7/11/2022

Professional License:
Greg D. Marquis - P.G. 9608.
GIS Design and Map Layout by Janine Bird.

Base Map Sources: Hydrography: National Hydrography Dataset; U.S. Geological Survey; Roads: California Department of Transportation (CalTrans).