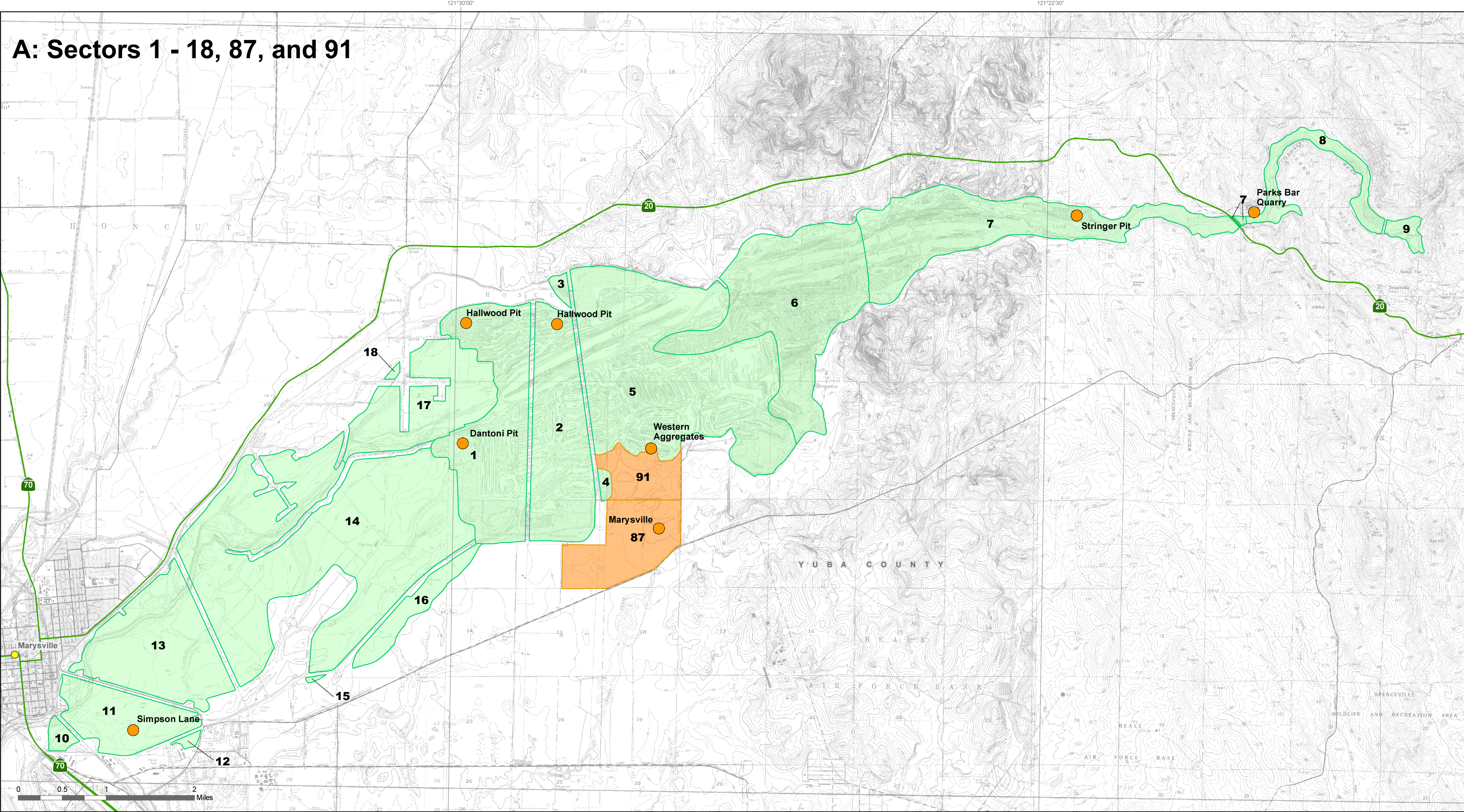


California Geological Survey

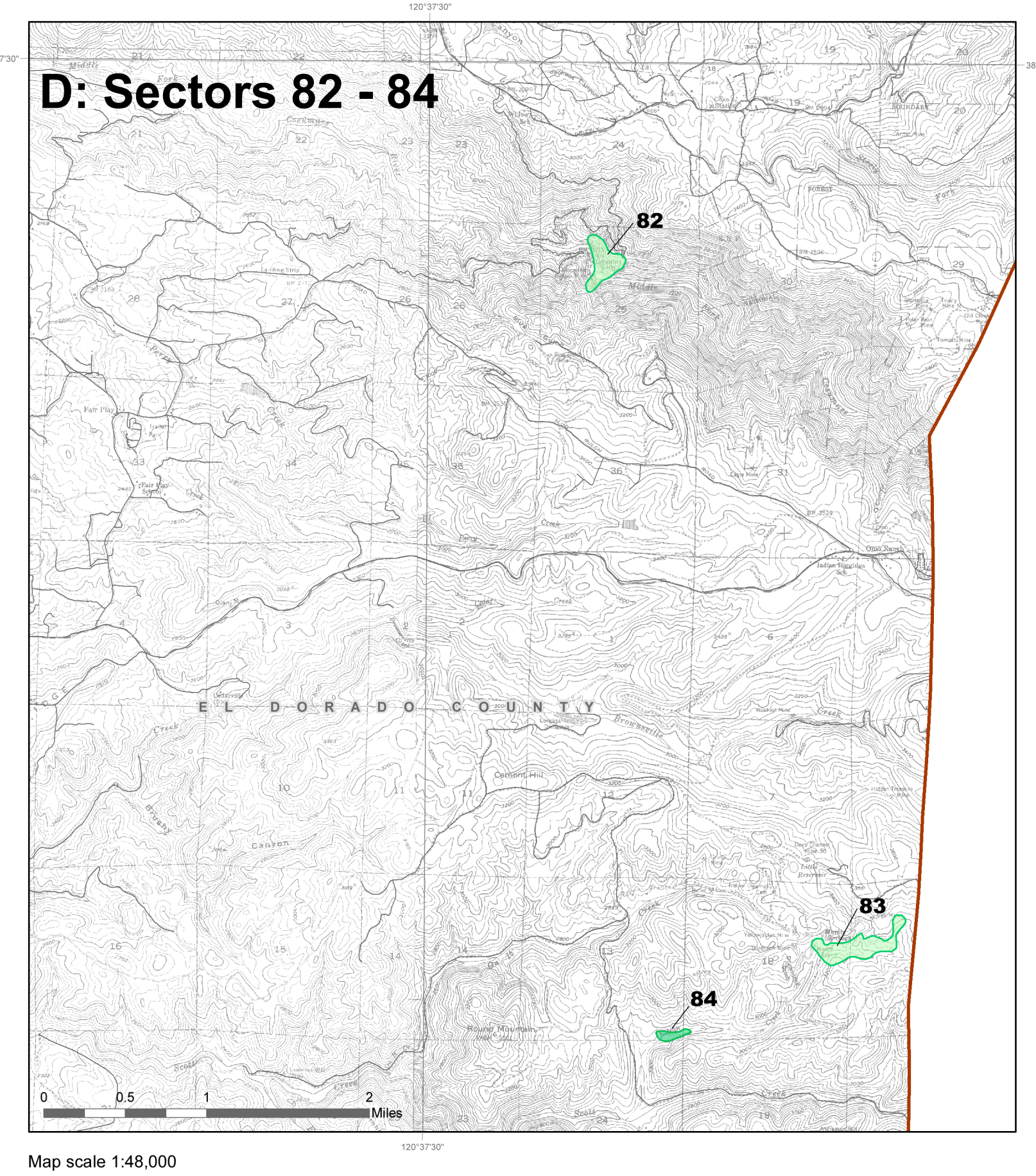
Resource Sector Map for Concrete Aggregate in the Greater Sacramento Area Production-Consumption Region

By Matt D. O'Neal and Fred W. Gius
2018

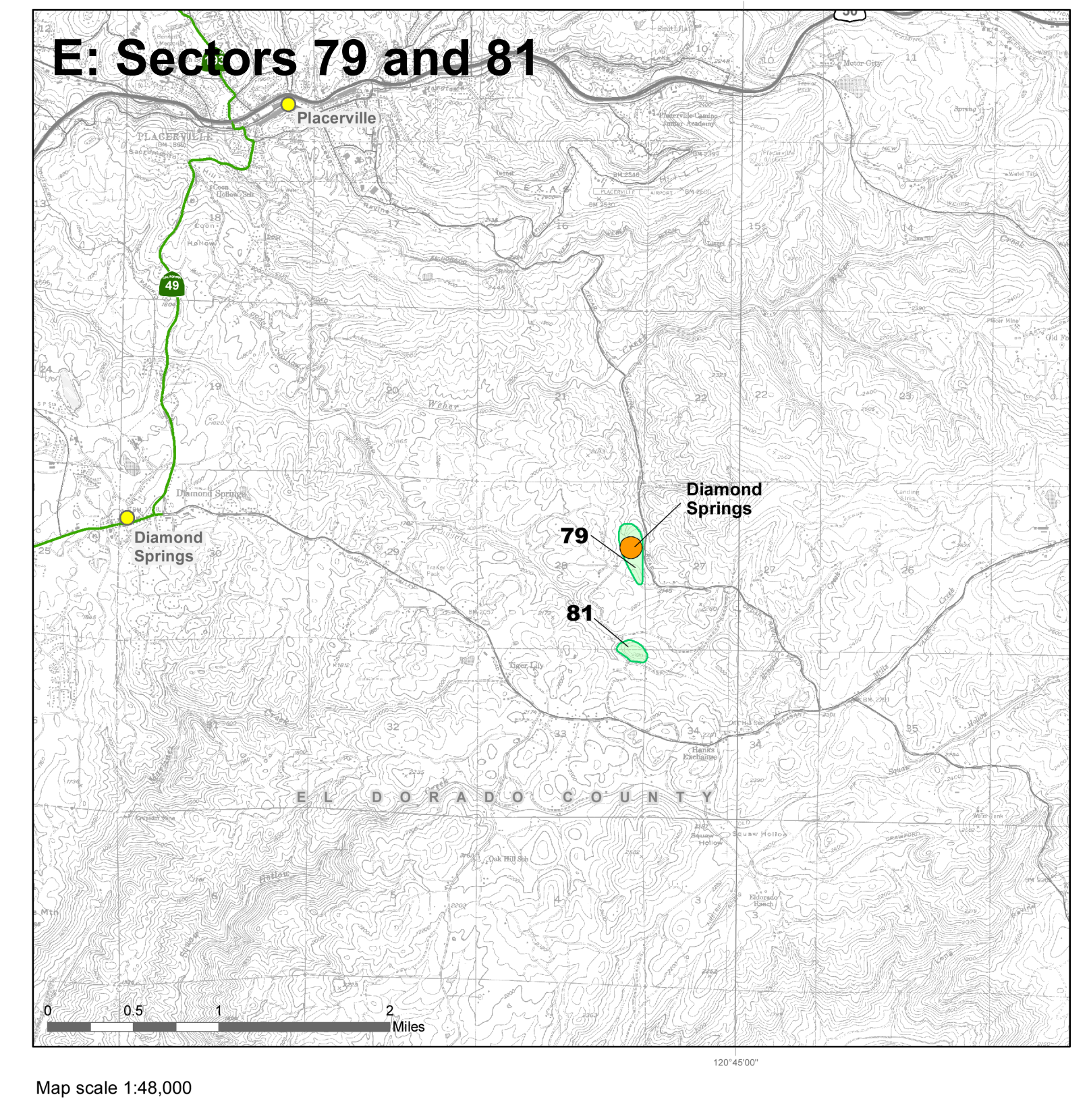
A: Sectors 1 - 18, 87, and 91



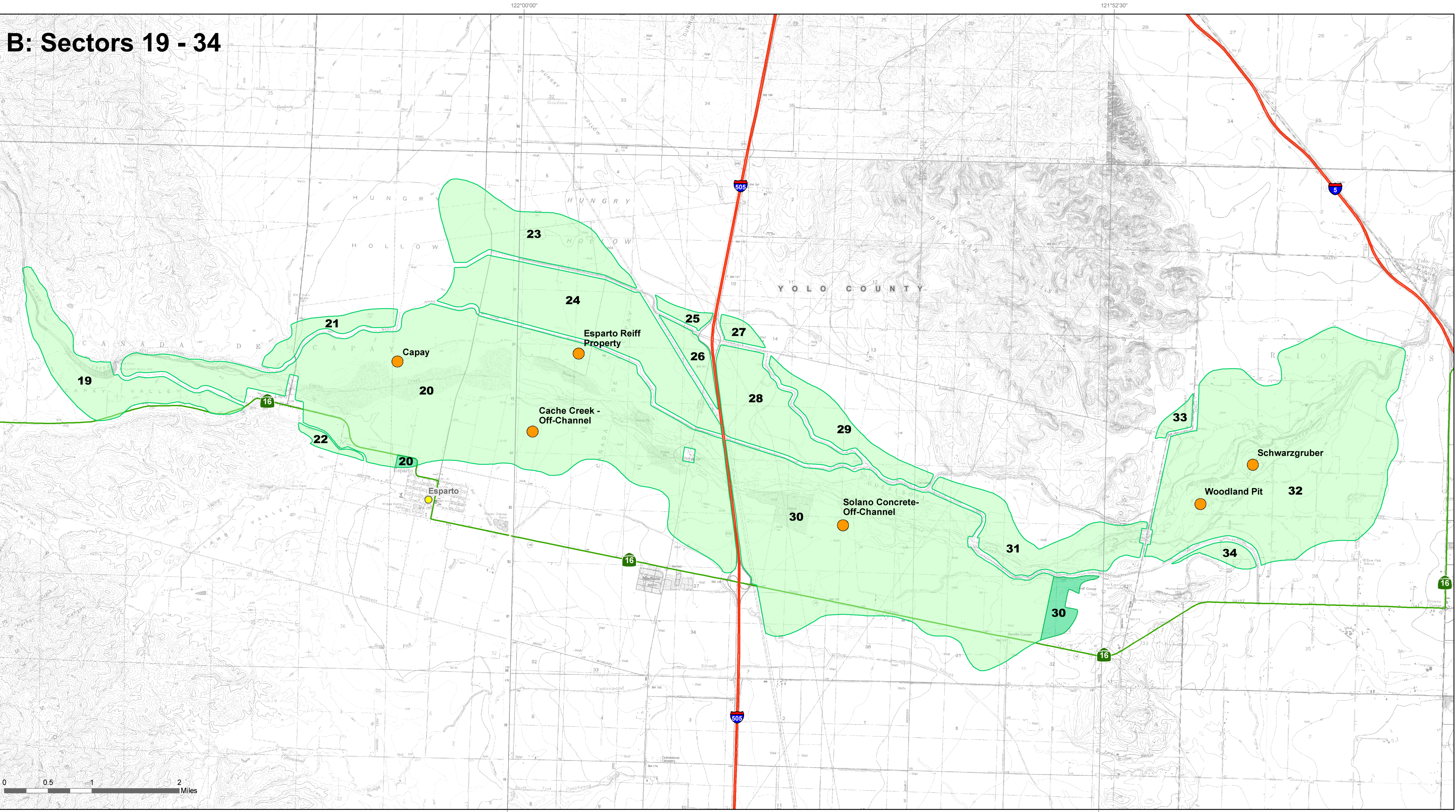
D: Sectors 82 - 84



E: Sectors 79 and 81

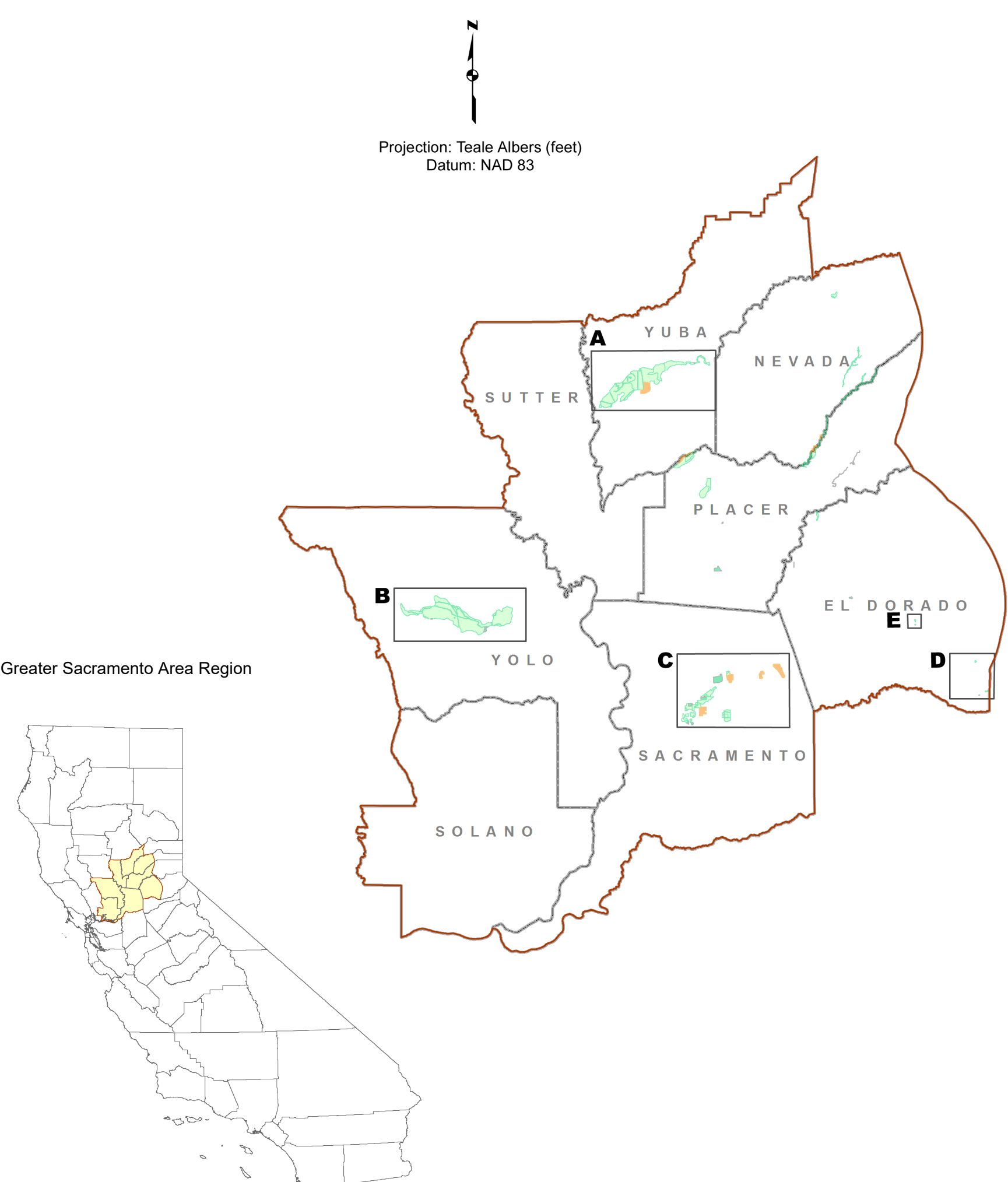
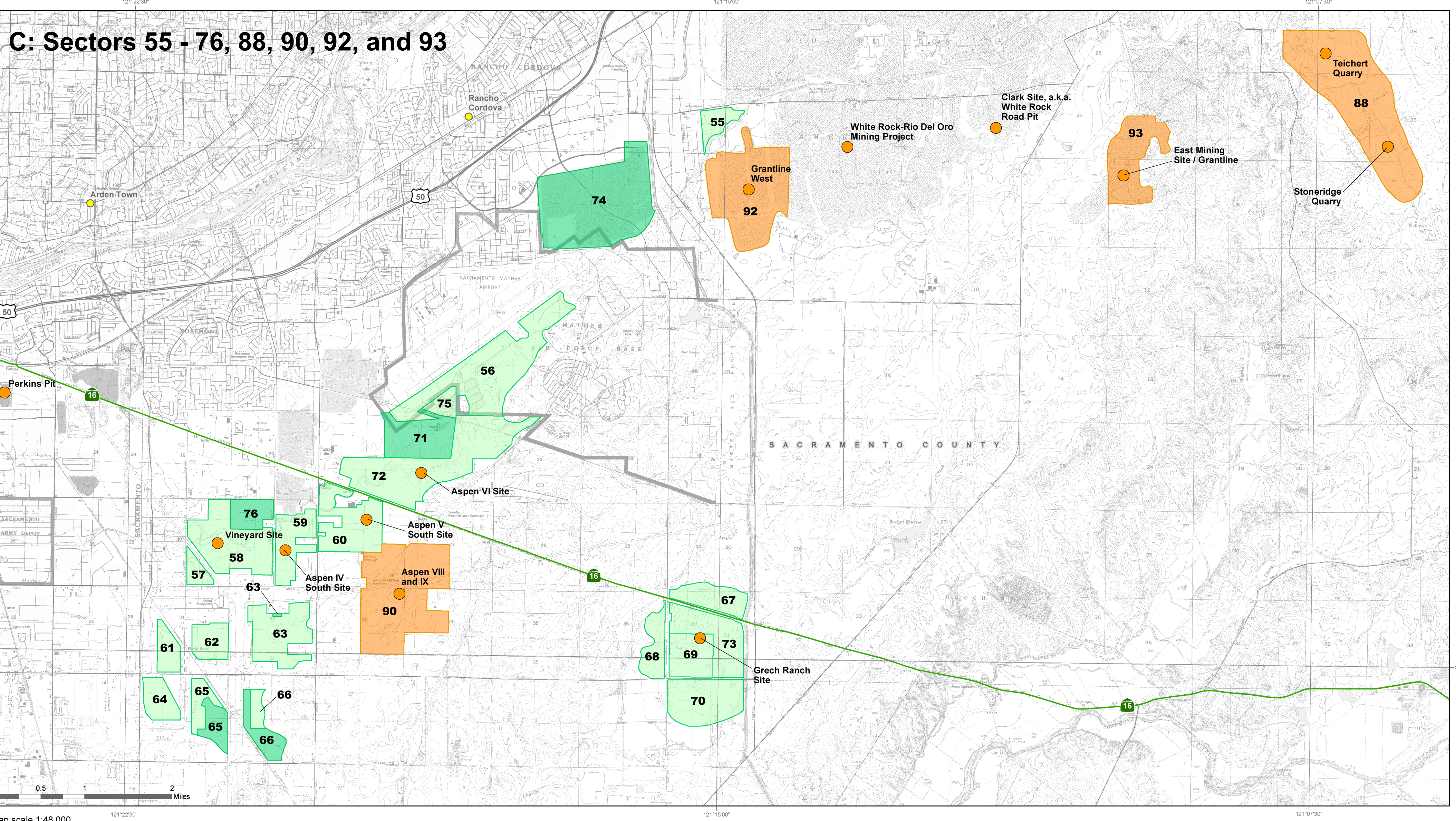


B: Sectors 19 - 34



- Sector depleted by mining, lost to incompatible land uses, or determined to no longer be significant upon re-evaluation.
- New sector containing regionally significant concrete aggregate resources
- Sector containing regionally significant concrete aggregate resources
- Mine
- Greater Sacramento Area P-C Region
- County
- City
- Interstate
- State Highway
- U.S. Highway
- Road

C: Sectors 55 - 76, 88, 90, 92, and 93



California
**Department of
Conservation**
California Geological Survey

Copyright 2018 by the California Department of Conservation, California Geological Survey. All rights reserved. No part of the publication may be reproduced without written consent of the California Geological Survey.
The California Department of Conservation makes no warranties as to the suitability of this product for any particular purpose.
www.conservation.ca.gov/gvs