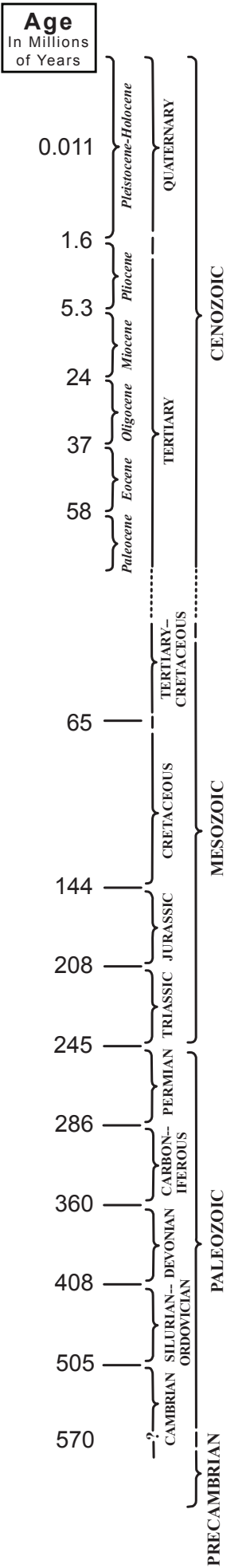


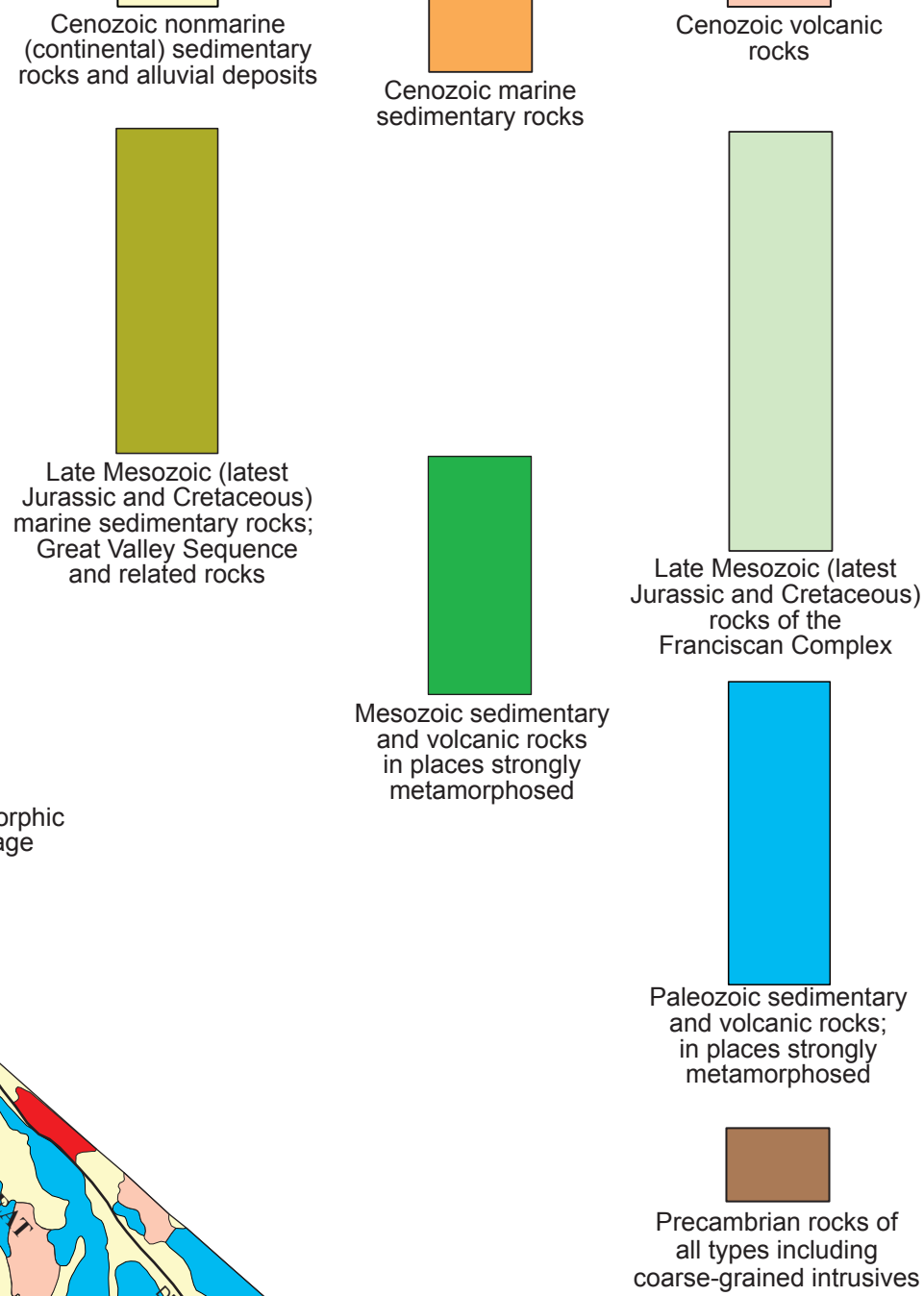
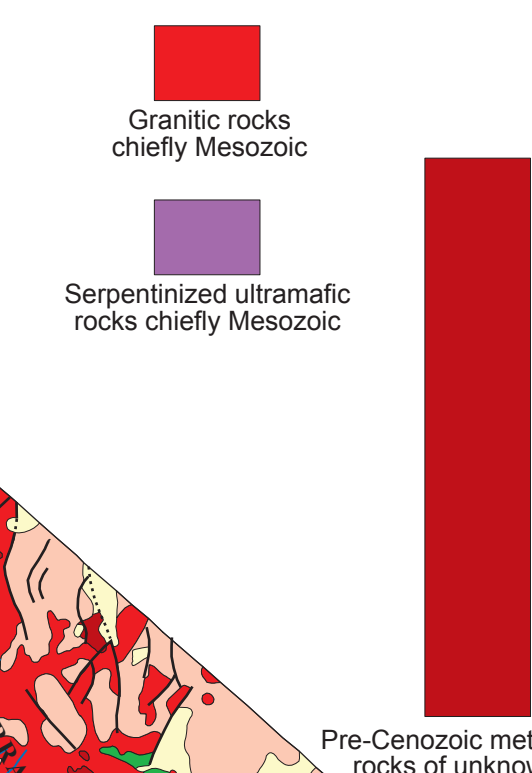
# SIMPLIFIED GEOLOGIC MAP OF CALIFORNIA

## CORRELATION OF MAP UNITS

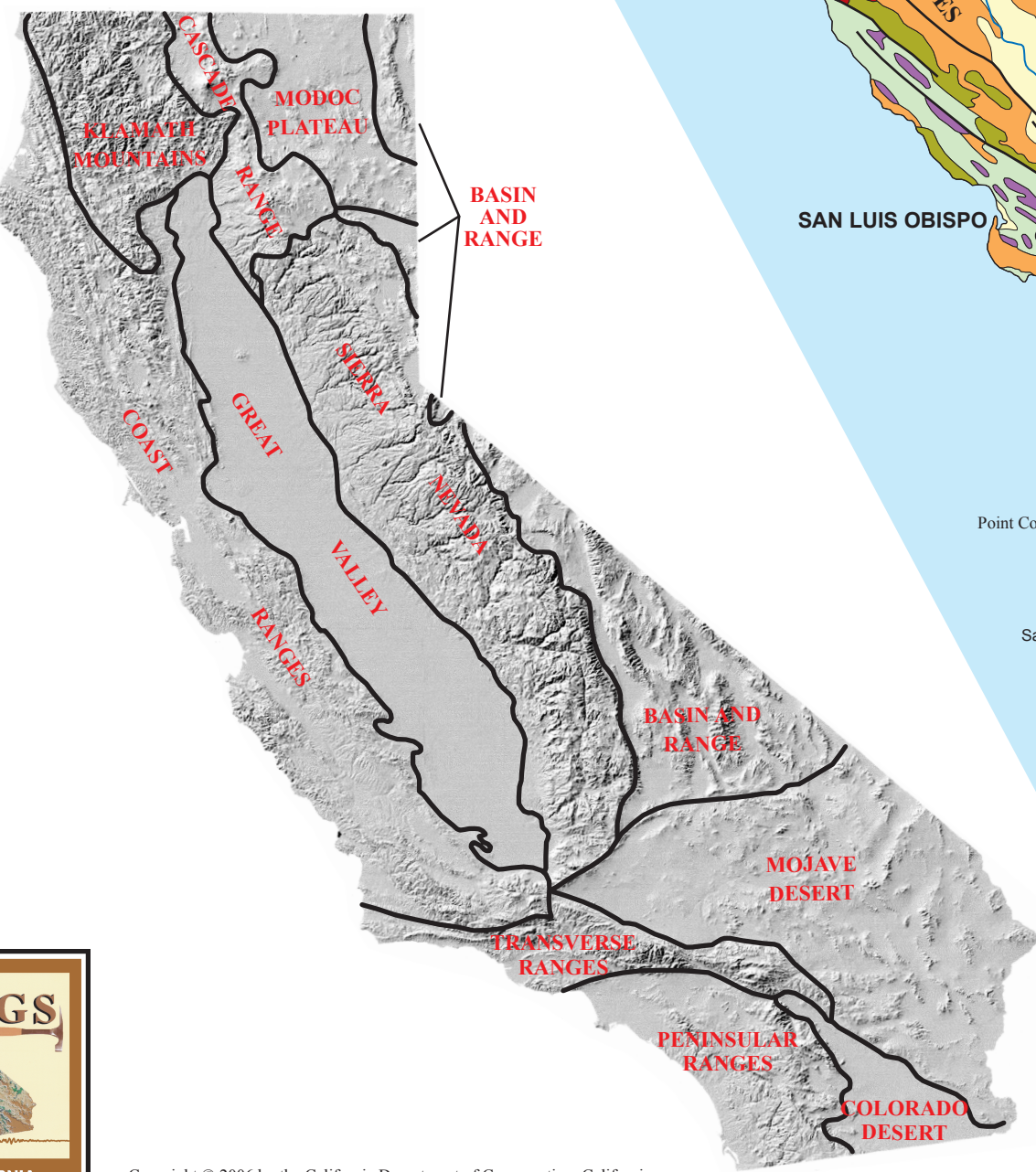
### SEDIMENTARY AND VOLCANIC ROCKS



### INTRUSIVE IGNEOUS AND METAMORPHIC ROCKS



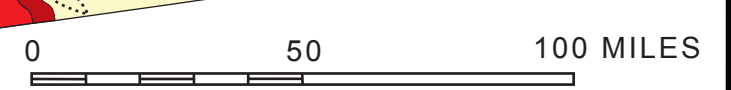
Shaded relief map showing the natural Geomorphic Provinces



Contact  
 Fault  
 Dotted where concealed; includes low-angle faults; arrows indicate direction or relative movement on strike-slip faults



Copyright © 2006 by the California Department of Conservation, California Geological Survey. All rights reserved. No part of this publication may be reproduced without written permission of the California Geological Survey.



Scale ≈ 1:2,250,000  
 Graphics by Jerry Wampole/CGS