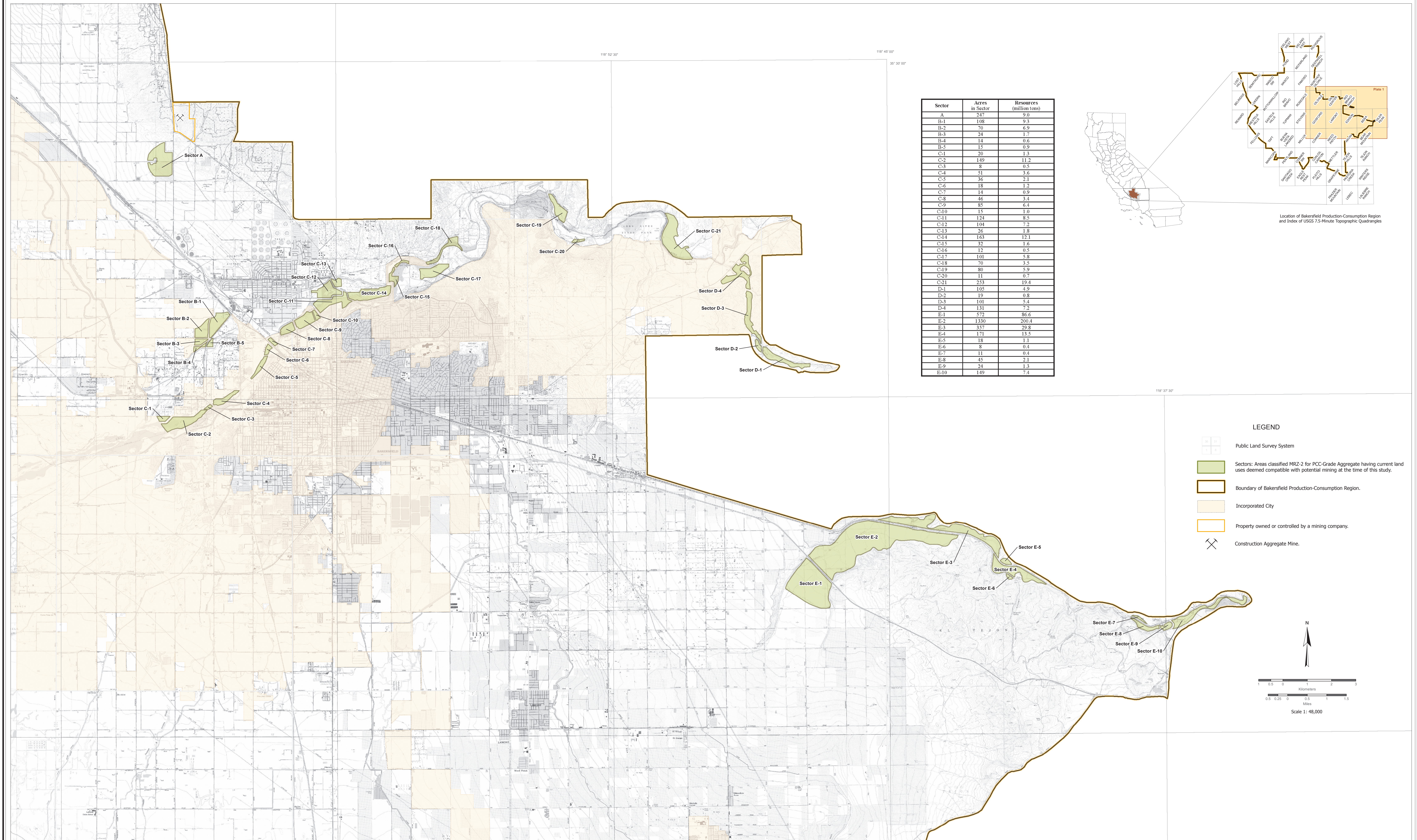


State Mining and Geology Board

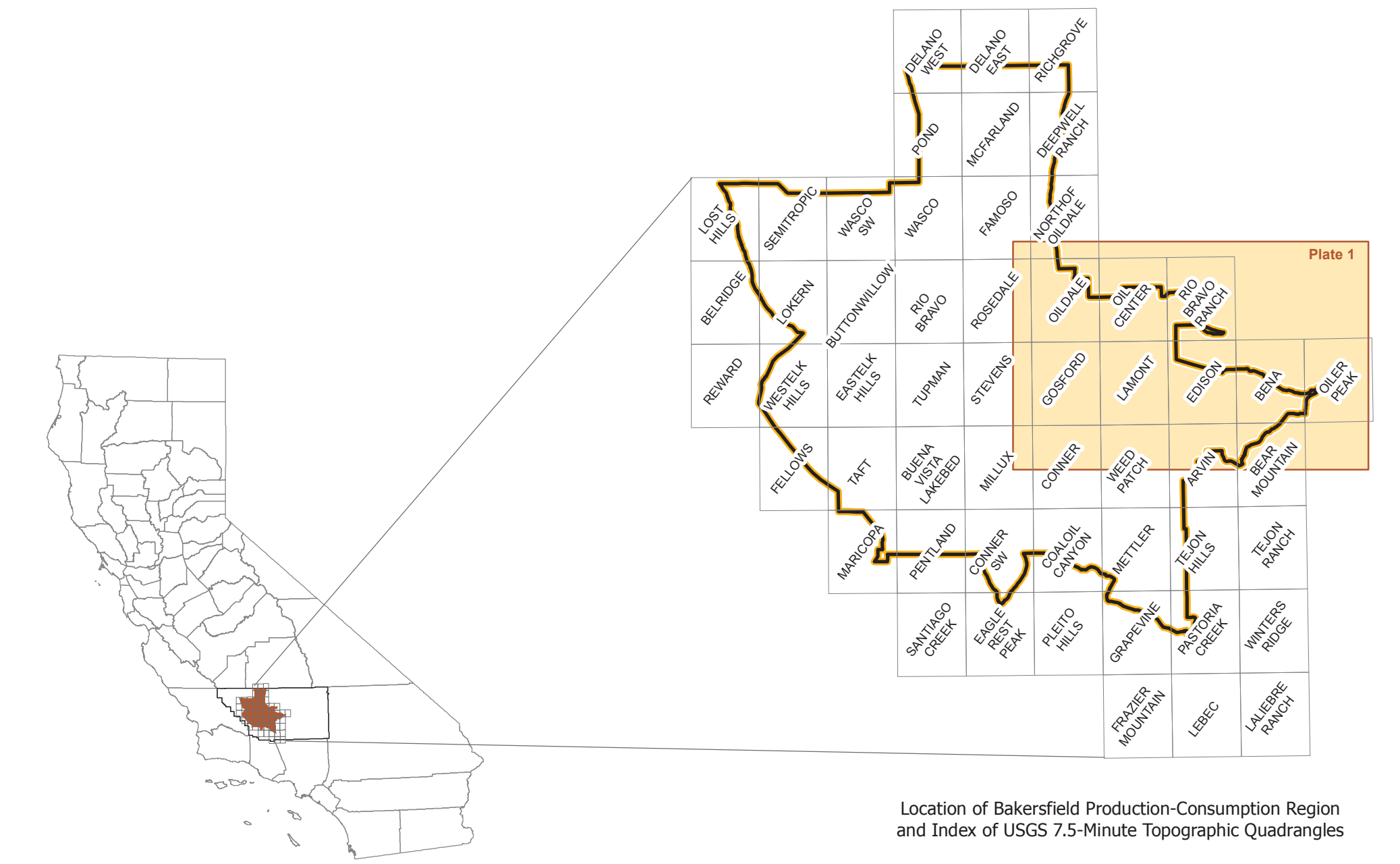
Regionally Significant Construction Aggregate Resource Areas in the Bakersfield Production-Consumption Region, Kern County, California, Northern Part

2011

Prepared in compliance with the Surface Mining
and Reclamation Act of 1975, Article 4, Section 2790



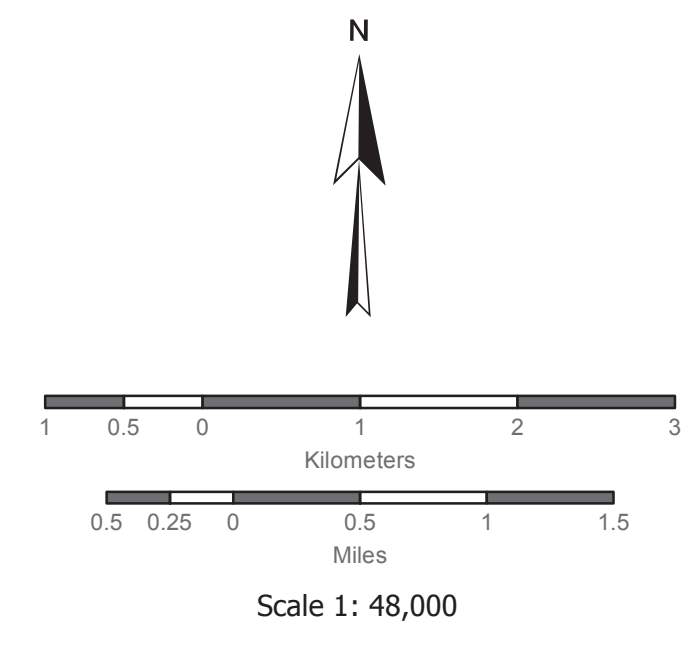
Sector	Acres in Sector	Resources (million tons)
A	247	9.0
B-1	108	9.3
B-2	70	6.9
B-3	24	1.7
B-4	14	0.6
B-5	15	0.9
C-1	20	1.3
C-2	149	11.2
C-3	8	0.5
C-4	51	3.6
C-5	36	2.1
C-6	18	1.2
C-7	14	0.9
C-8	46	3.4
C-9	85	6.4
C-10	15	1.0
C-11	124	8.5
C-12	104	7.2
C-13	26	1.8
C-14	163	12.1
C-15	32	1.6
C-16	12	0.5
C-17	101	5.8
C-18	70	3.5
C-19	80	5.9
C-20	11	0.7
C-21	253	19.4
D-1	105	4.9
D-2	19	0.8
D-3	101	5.4
D-4	131	7.2
E-1	572	86.6
E-2	1330	200.4
E-3	337	29.8
E-4	171	13.5
E-5	18	1.1
E-6	8	0.4
E-7	11	0.4
E-8	45	2.1
E-9	24	1.3
E-10	149	7.4



Location of Bakersfield Production-Consumption Region and Index of USGS 7.5-Minute Topographic Quadrangles

LEGEND

- Public Land Survey System
- Sectors: Areas classified MRZ-2 for PCC-Grade Aggregate having current land uses deemed compatible with potential mining at the time of this study.
- Boundary of Bakersfield Production-Consumption Region.
- Incorporated City
- Property owned or controlled by a mining company.
- Construction Aggregate Mine.



Map Sources (Digital GIS Layers):
7.5-Minute Topographic Quadrangles: U.S. Geological Survey
Incorporated Cities: U.S. Census Bureau 2010

Based on Plates 2a and 2b from California Geological Survey Special Report 210 -
Update of Mineral Land Classification: Aggregate Materials in the Bakersfield
Production-Consumption Region, Kern County, California. Busch, L.L., 2009.
California Geological Survey Web Site:
<http://www.conservation.ca.gov/cgs>

