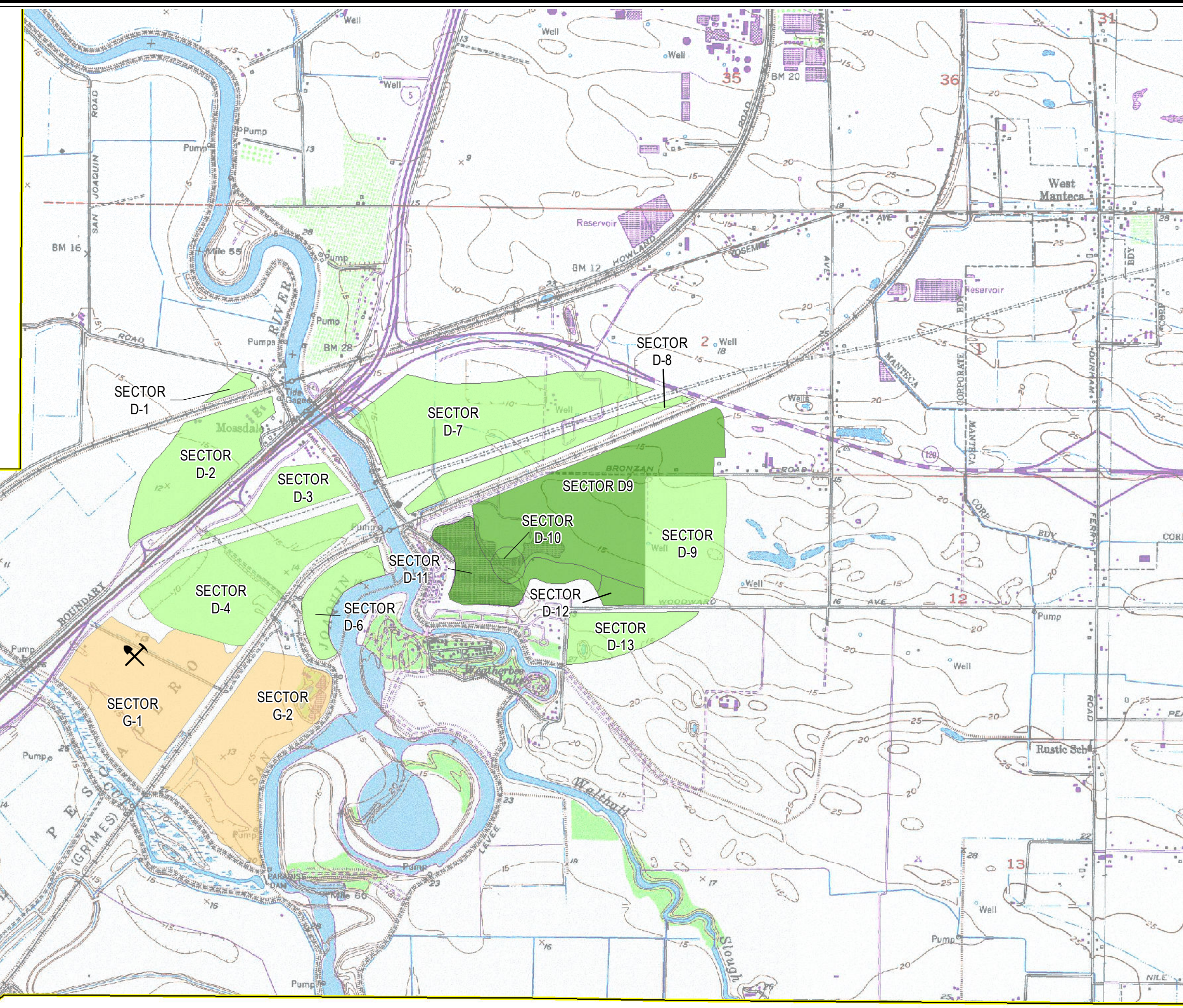
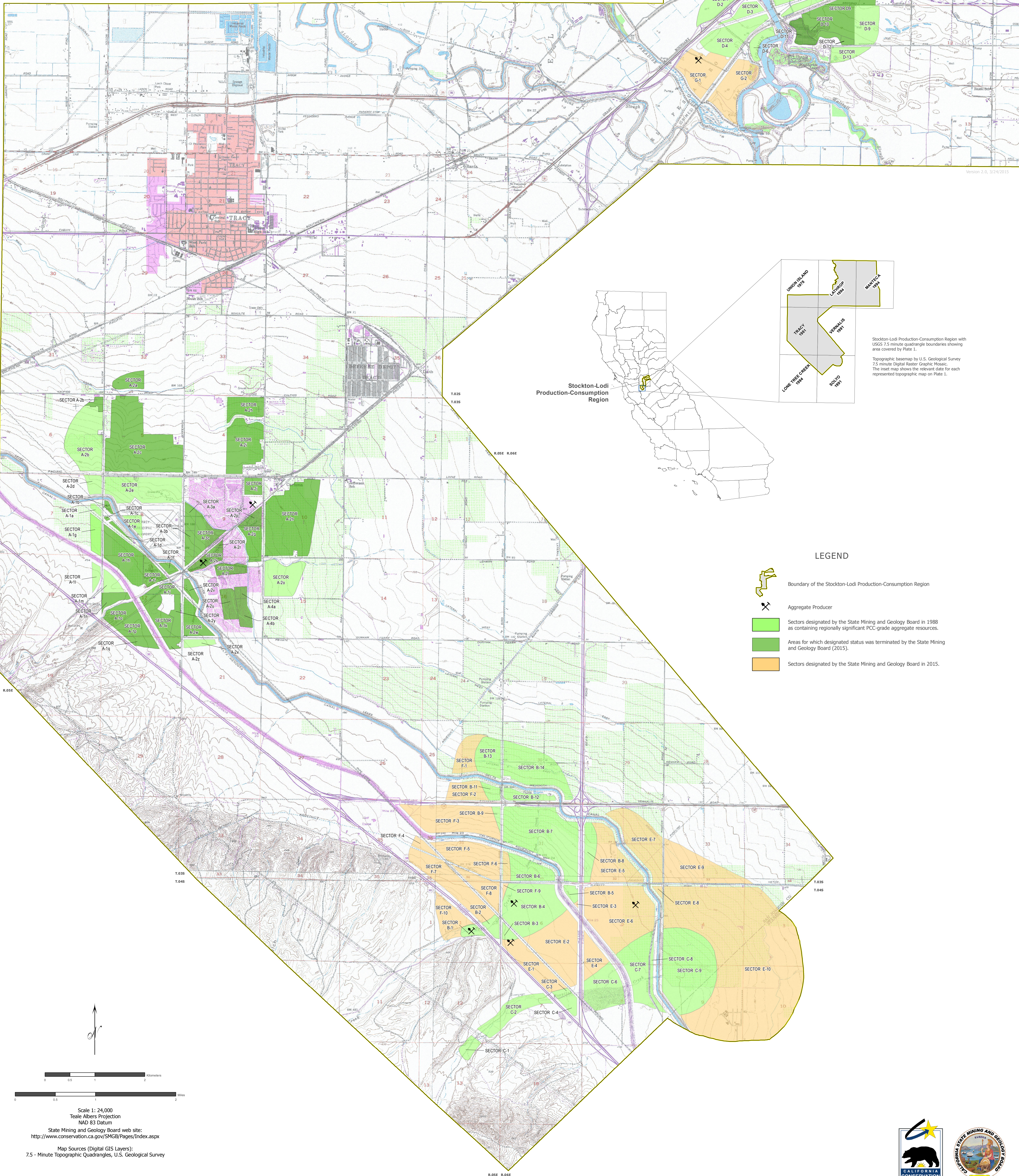


State Mining and Geology Board

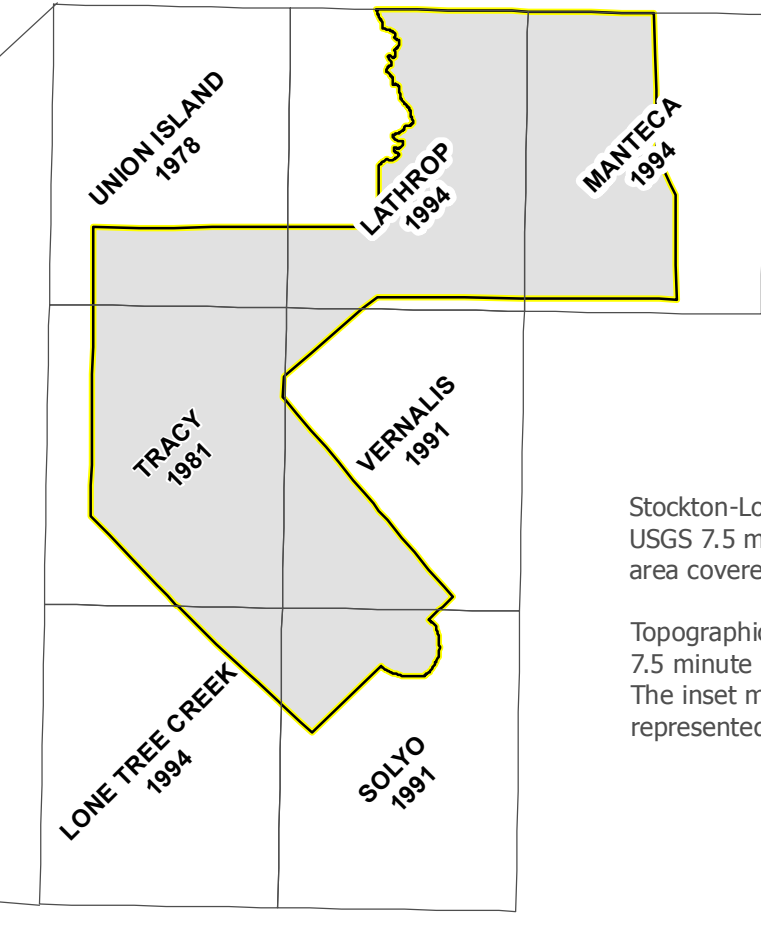
Updated Designation in the Stockton-Lodi Production-Consumption (P-C) Region, San Joaquin and Stanislaus Counties, California

Prepared in Compliance with the Surface Mining and
Reclamation Act of 1975, Article 4, Section 2790

2015



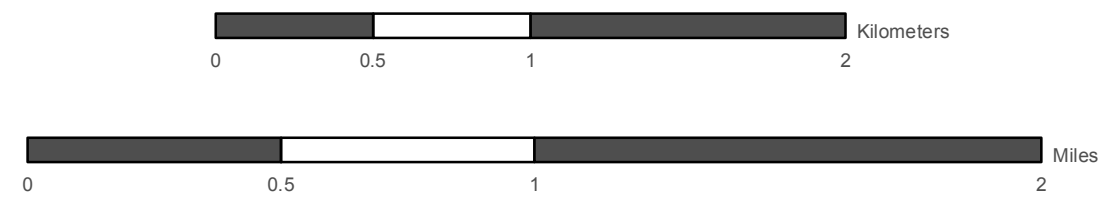
Stockton-Lodi
Production-Consumption
Region



Stockton-Lodi Production-Consumption Region with
USGS 7.5 minute quadrangle boundaries showing
area covered by Plate 1.
Topographic base map by U.S. Geological Survey
7.5 minute Digital Raster Graphic Mosaic.
The inset map shows the relevant date for each
represented topographic map on Plate 1.

LEGEND

- Boundary of the Stockton-Lodi Production-Consumption Region
- Aggregate Producer
- Sectors designated by the State Mining and Geology Board in 1988 as containing regionally significant PCC-grade aggregate resources.
- Areas for which designated status was terminated by the State Mining and Geology Board (2015).
- Sectors designated by the State Mining and Geology Board in 2015.



State Mining and Geology Board web site:
<http://www.conservation.ca.gov/SMGB/Pages/Index.aspx>
Map Sources (Digital GIS Layers):
7.5 - Minute Topographic Quadrangles, U.S. Geological Survey

