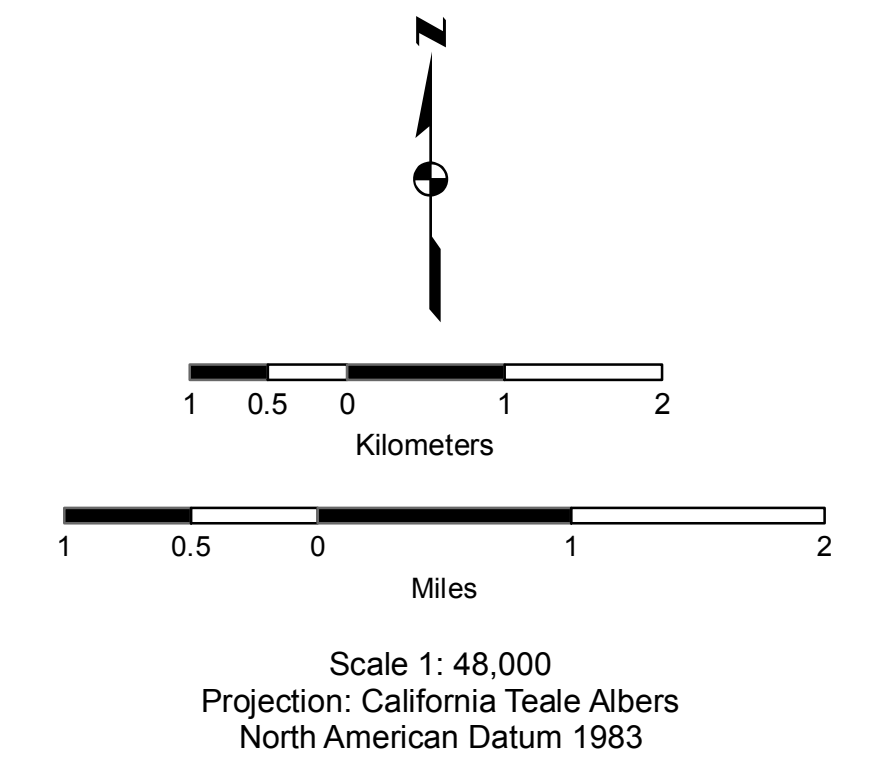
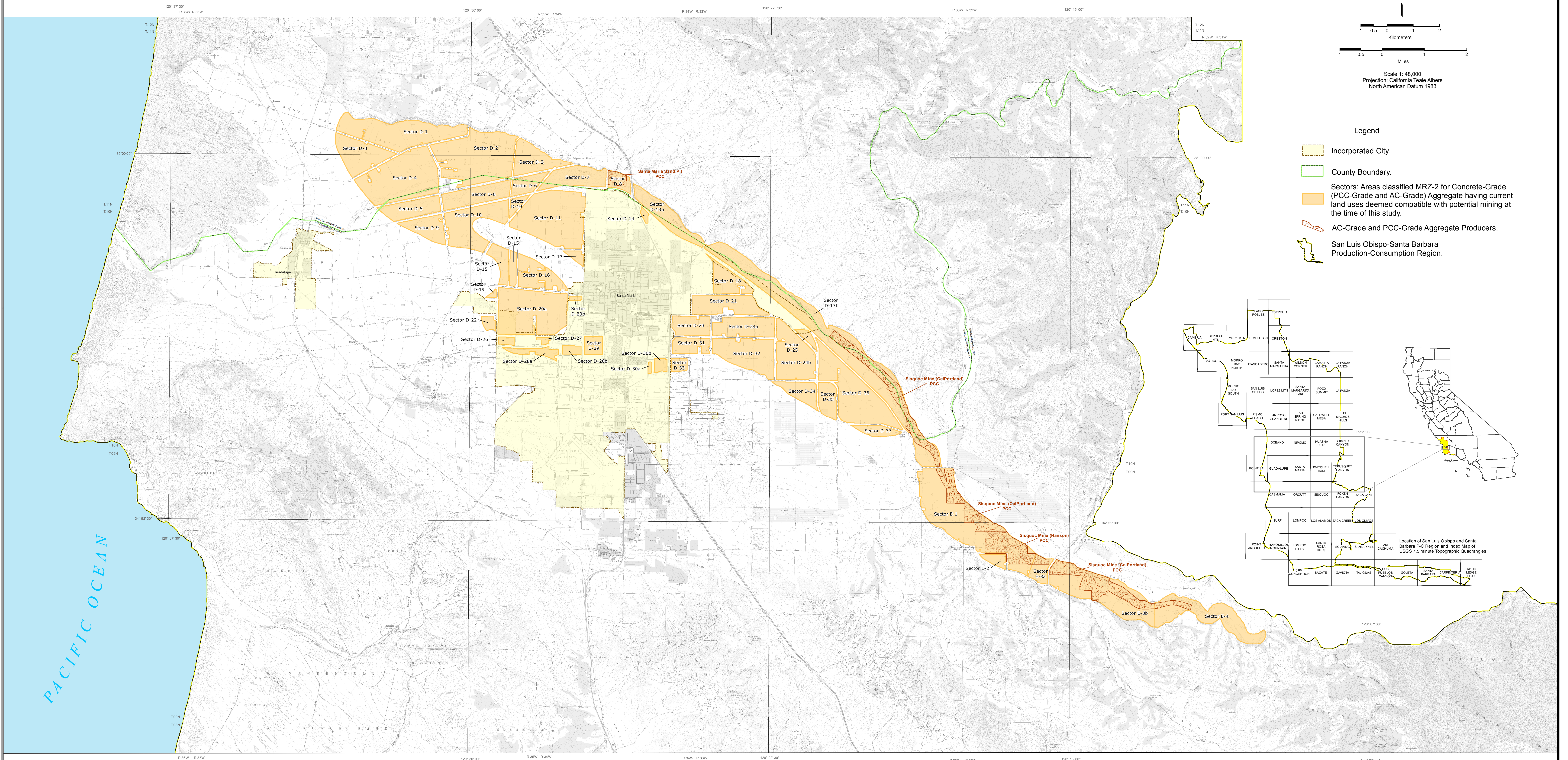


State Mining and Geology Board

Designation in the San Luis Obispo-Santa Barbara Production-Consumption (P-C) Region, California – Middle Part

Prepared in Compliance with the Surface Mining and
Reclamation Act of 1975, Article 4, Section 2790

2015



- Legend**
- Incorporated City.
 - County Boundary.
 - Sectors: Areas classified MRZ-2 for Concrete-Grade (PCC-Grade and AC-Grade) Aggregate having current land uses deemed compatible with potential mining at the time of this study.
 - AC-Grade and PCC-Grade Aggregate Producers.
 - San Luis Obispo-Santa Barbara Production-Consumption Region.

