

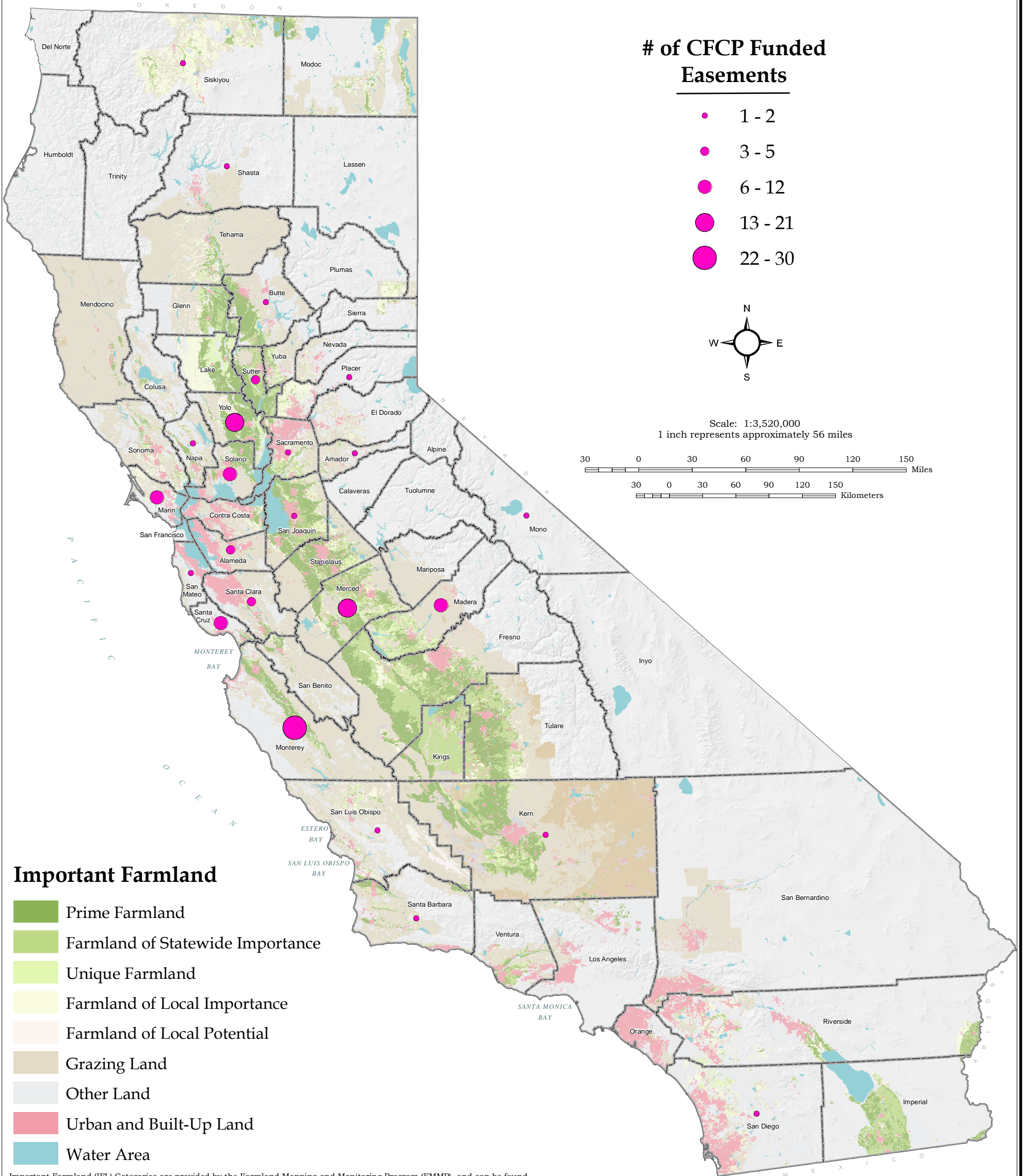


STATE OF CALIFORNIA
 EDMUND G. BROWN JR. *Governor*
 THE NATURAL RESOURCES AGENCY
 JOHN LAIRD, *Secretary*
 DEPARTMENT OF CONSERVATION
 DEREK CHERNOW, *Acting Director*

CALIFORNIA DEPARTMENT OF CONSERVATION
 DIVISION OF LAND RESOURCE PROTECTION



Number of Completed Easements By County 1996-2010



Important Farmland (IFL) Categories are provided by the Farmland Mapping and Monitoring Program (FMMP), and can be found on the FMMP website.

This map should be used within the limits of its purpose - as a current inventory of agricultural resources. This map does not necessarily reflect general plan or zoning designations, city limit lines, changing economic or market conditions, or other factors which may be taken into consideration when land use policies are determined. This map is not designed to be used for parcel-specific planning purposes due to its scale.

The Department of Conservation makes no warranties as to the suitability of this product for any particular purpose.

Map Contact: www.conservation.ca.gov/dlrp/
 801 K Street, MS 18-01,
 Sacramento, CA 95814
 Phone: (916) 324-0859
 e-mail: dlrp@conservation.ca.gov



Copyright California Department of Conservation, Division of Land Resource Protection, 2010.