

**CALIFORNIA DEPARTMENT OF CONSERVATION  
CALIFORNIA GEOLOGICAL SURVEY**

[www.conservation.ca.gov](http://www.conservation.ca.gov)

---

**ANNOUNCEMENT OF PRELIMINARY REVIEW MAPS  
OF NEW AND REVISED SEISMIC HAZARD ZONES  
AUGUST 17, 2017**

Preliminary Review Maps of new and revised Seismic Hazard Zones were released to the cities of Antioch, Belmont, Brentwood, Burlingame, Foster City, Hillsborough, Menlo Park, Murrieta, Oakley, Redwood City, San Carlos, San Mateo, Temecula and Wildomar and the counties of Contra Costa, Riverside and San Mateo by the California Geological Survey (CGS) on August 17, 2017. These maps are released under the authority of the Seismic Hazards Mapping Act that was passed following the 1989 Loma Prieta earthquake. The Seismic Hazards Mapping Act is a state law designed to reduce the hazards from soil liquefaction and landslides during an earthquake.

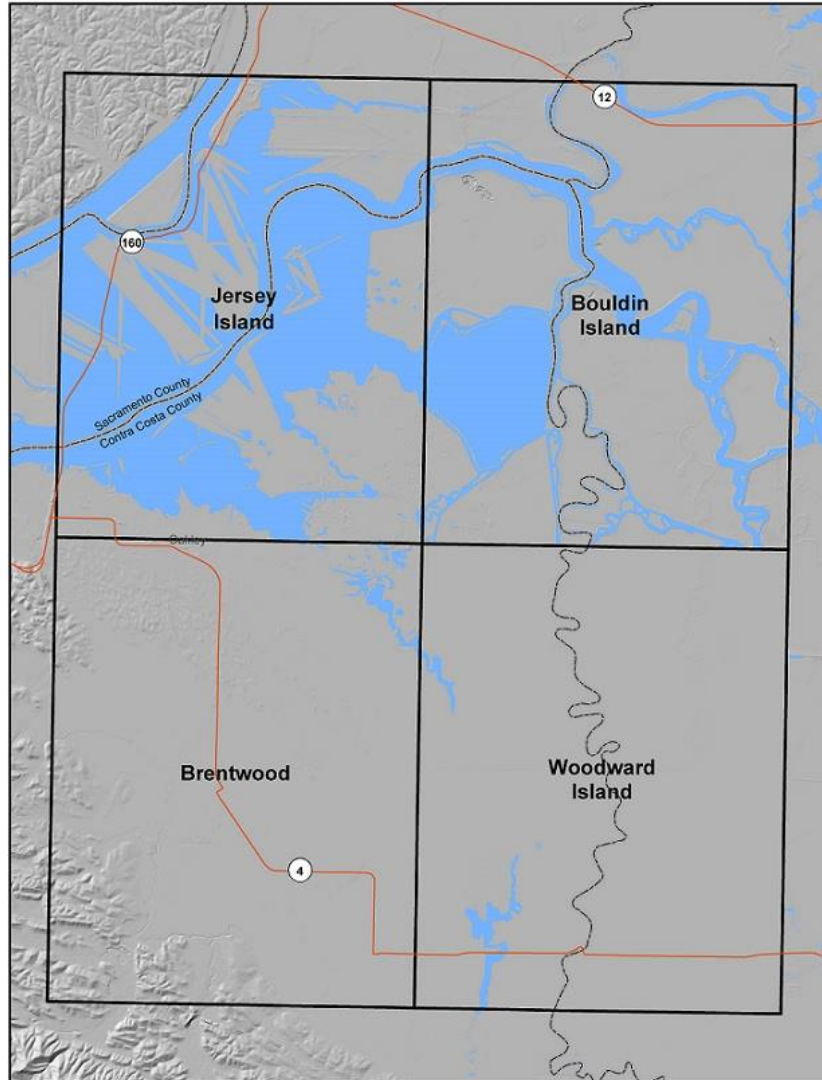
Seismic Hazard Zones are regulatory zones that encompass areas that have a potential for future ground deformations caused by liquefaction or landslides. The index maps below (Figures 1 and 2) show the general location of maps delineating the preliminary Seismic Hazard Zones within the affected counties.

**Review Comment Period**

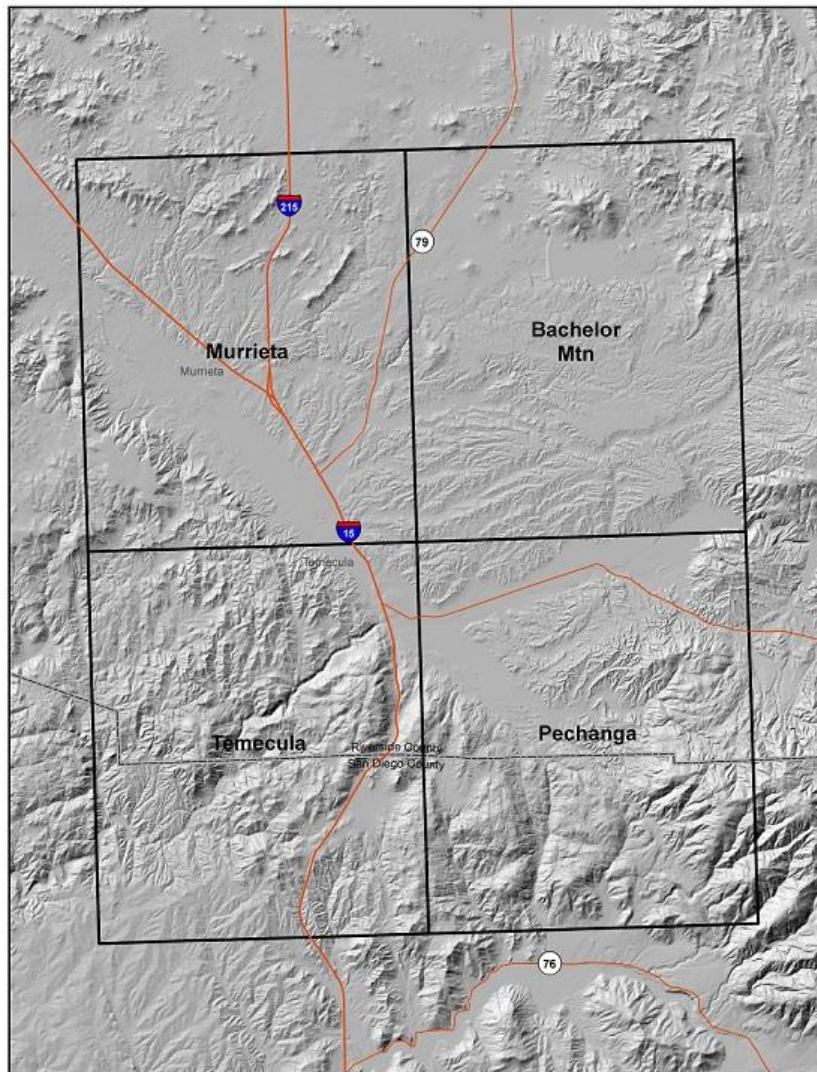
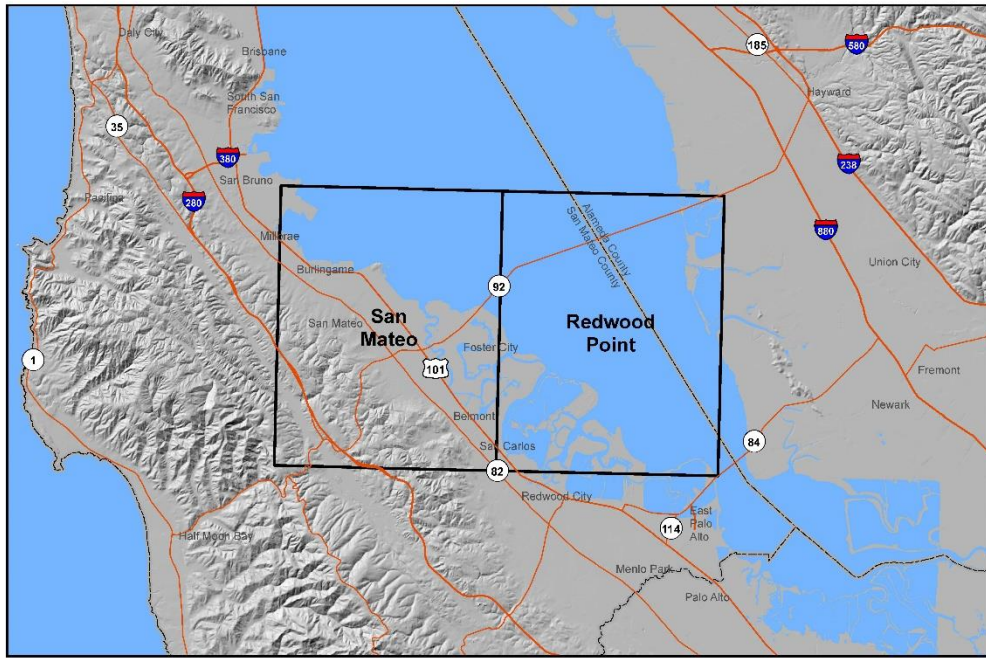
The August 17, 2017 release date begins a 90-day public comment period designed to provide the opportunity for cities, counties, state agencies, and the public to provide technical review comments to the State Mining and Geology Board that may have a bearing on the proposed Seismic Hazard Zone maps. Comments should be sent to the State Mining and Geology Board before **November 17, 2017**. Comments should be addressed to:

Jeffrey Schmidt, Executive Officer  
State Mining and Geology Board  
801 K Street, MS 20-15 Sacramento, CA 95814  
(916) 322-1082  
[smgb@conservation.ca.gov](mailto:smgb@conservation.ca.gov)

The State Mining and Geology Board will hold a public hearing near the end of the 90-day review period. **For more information on the date and location of the public hearing, contact the [State Mining and Geology Board](#).**



**Figure 1. Index of Preliminary Seismic Hazard Zone Maps for Contra Costa County, California.**



**Figure 2. Index of Preliminary Seismic Hazard Zone Maps for San Mateo and Riverside Counties, California.**